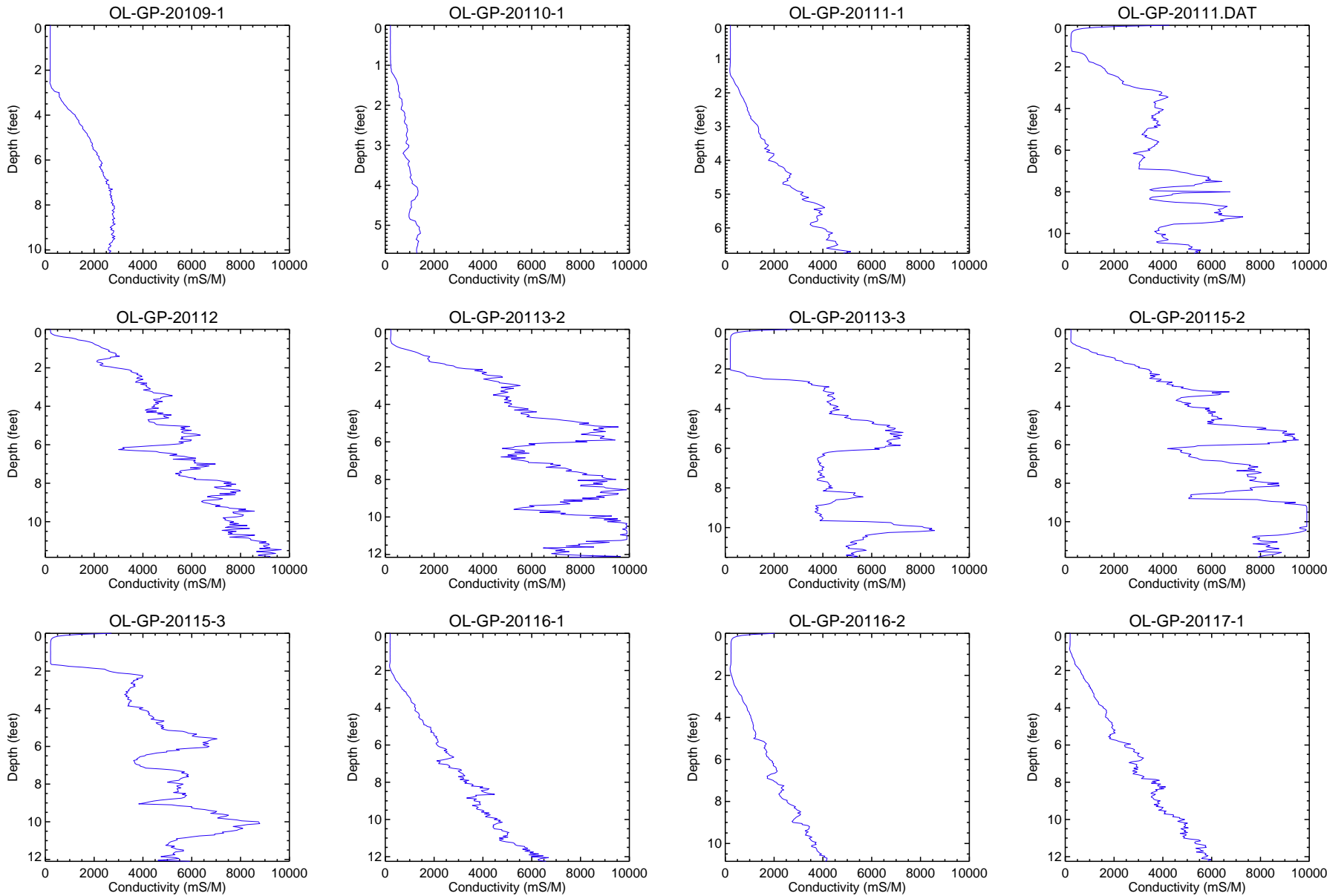
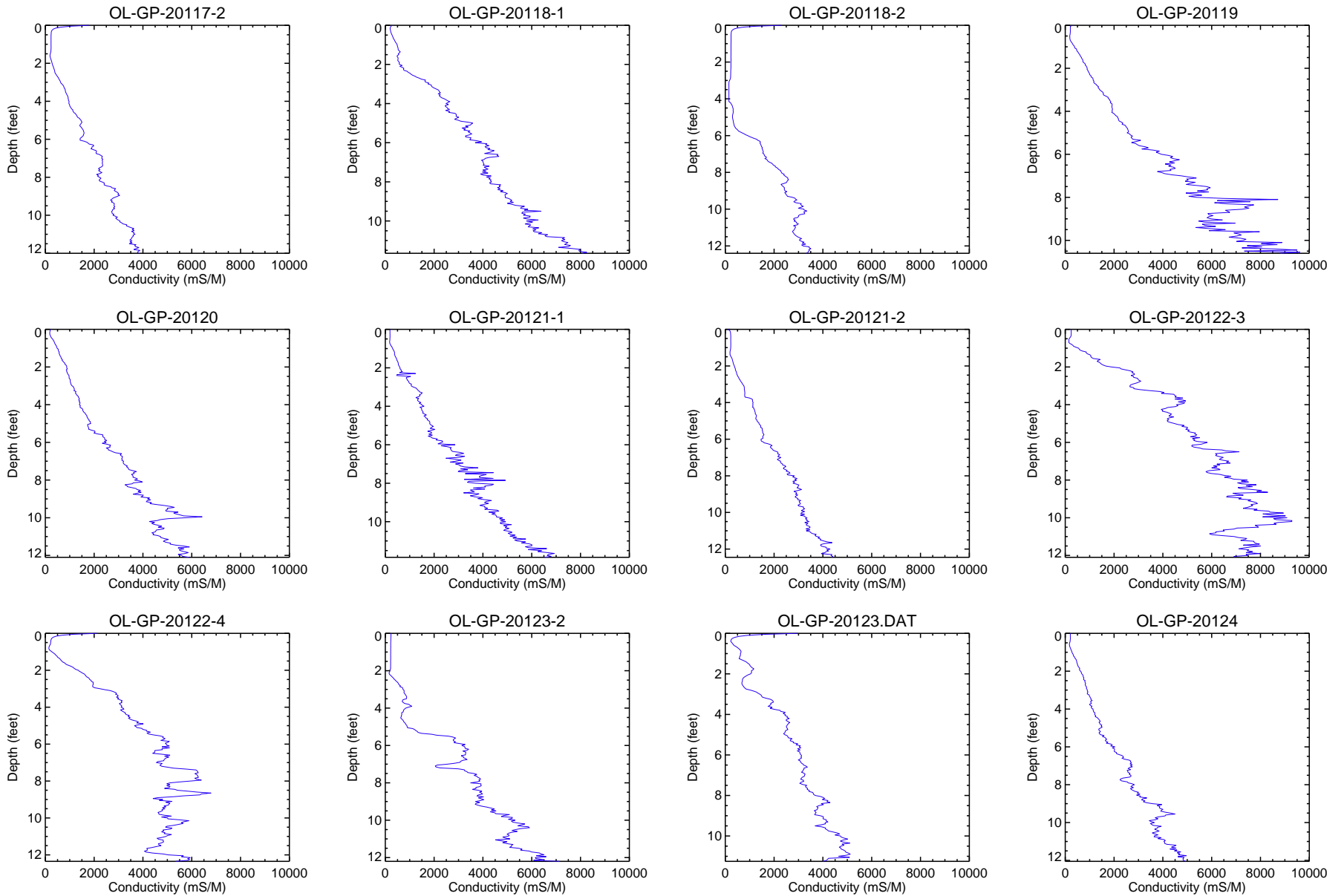


APPENDIX G
GEOPROBE PROFILES



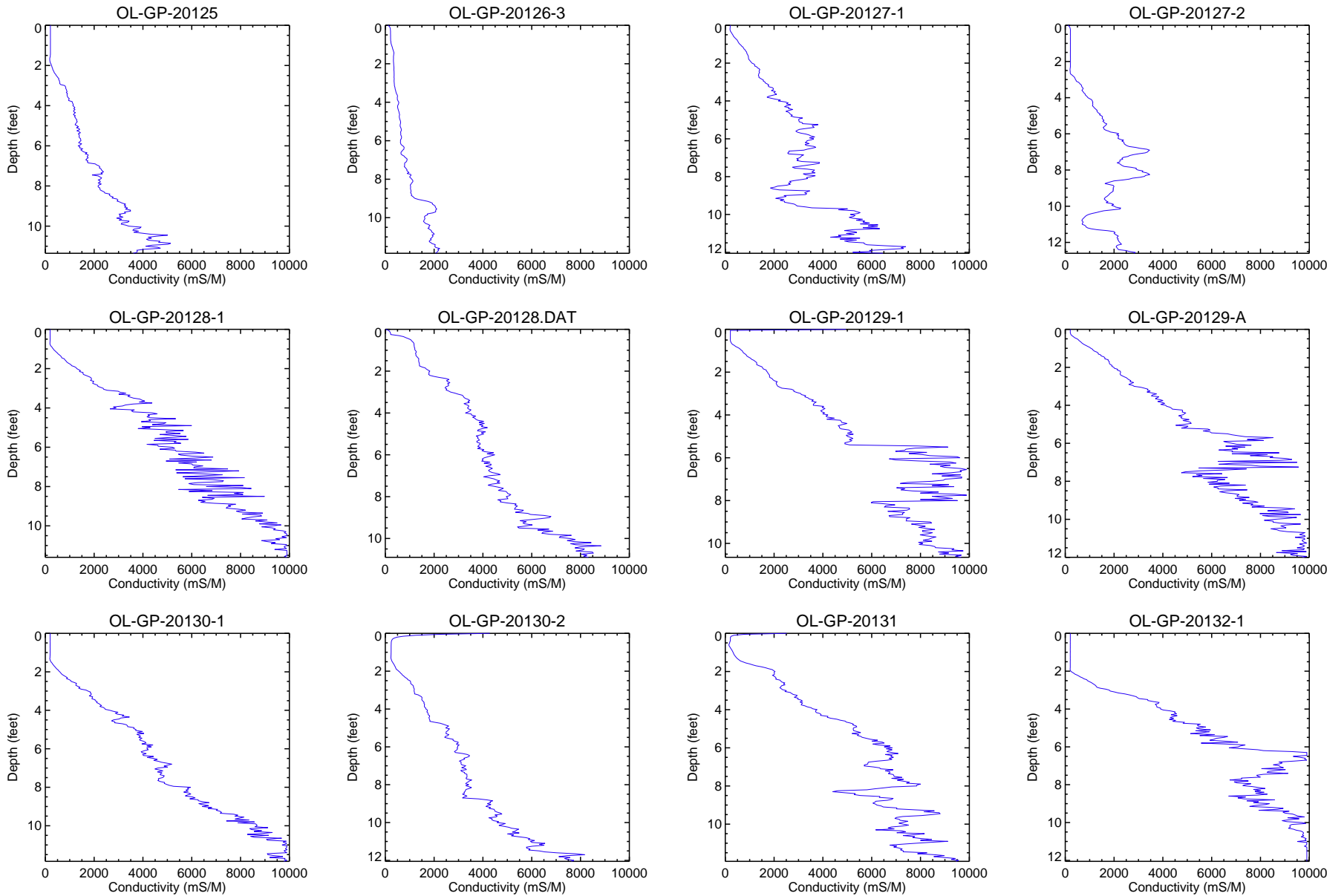
Depth profiles of 2008 conductivity readings in Onondaga Lake.

Notes: Data collected using an SC400 conductivity probe on a FC4000 - Geoprobe Field Instrument - EC. Conductivity measured in milliSiemens per meter (mS/M).



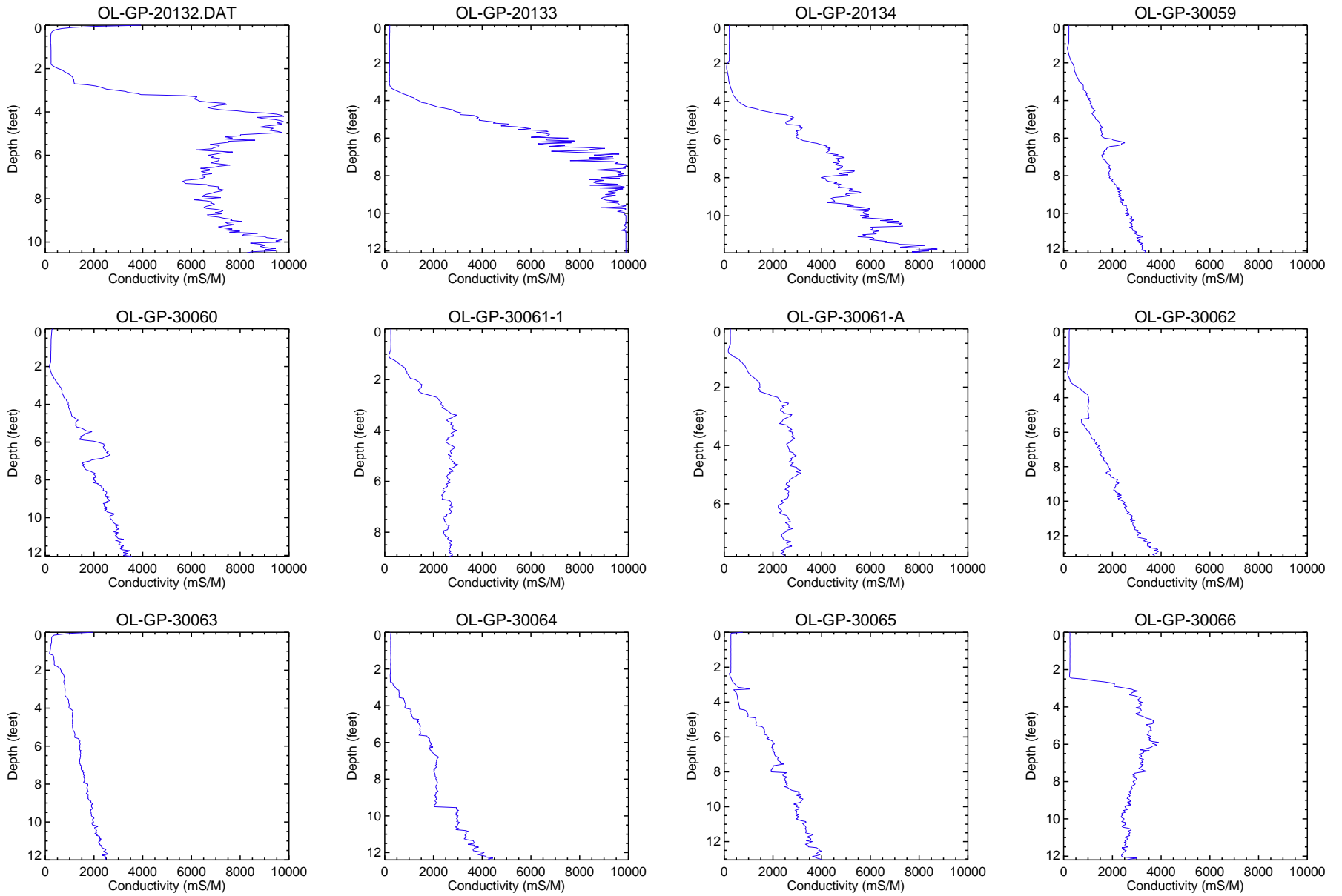
Depth profiles of 2008 conductivity readings in Onondaga Lake.

Notes: Data collected using an SC400 conductivity probe on a FC4000 - Geoprobe Field Instrument - EC. Conductivity measured in milliSeimens per meter (mS/M).



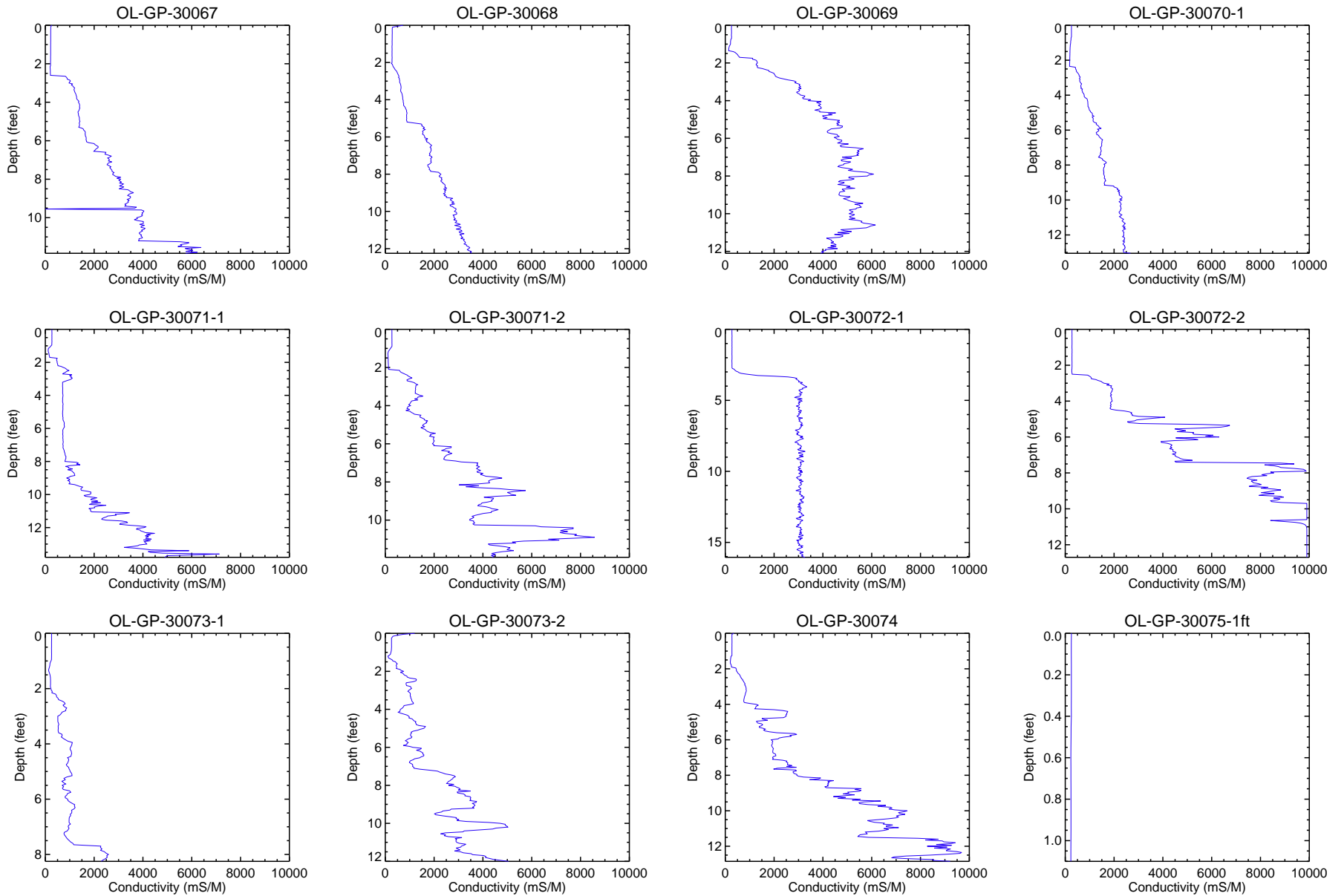
Depth profiles of 2008 conductivity readings in Onondaga Lake.

Notes: Data collected using an SC400 conductivity probe on a FC4000 - Geoprobe Field Instrument - EC. Conductivity measured in milliSeimens per meter (mS/M).



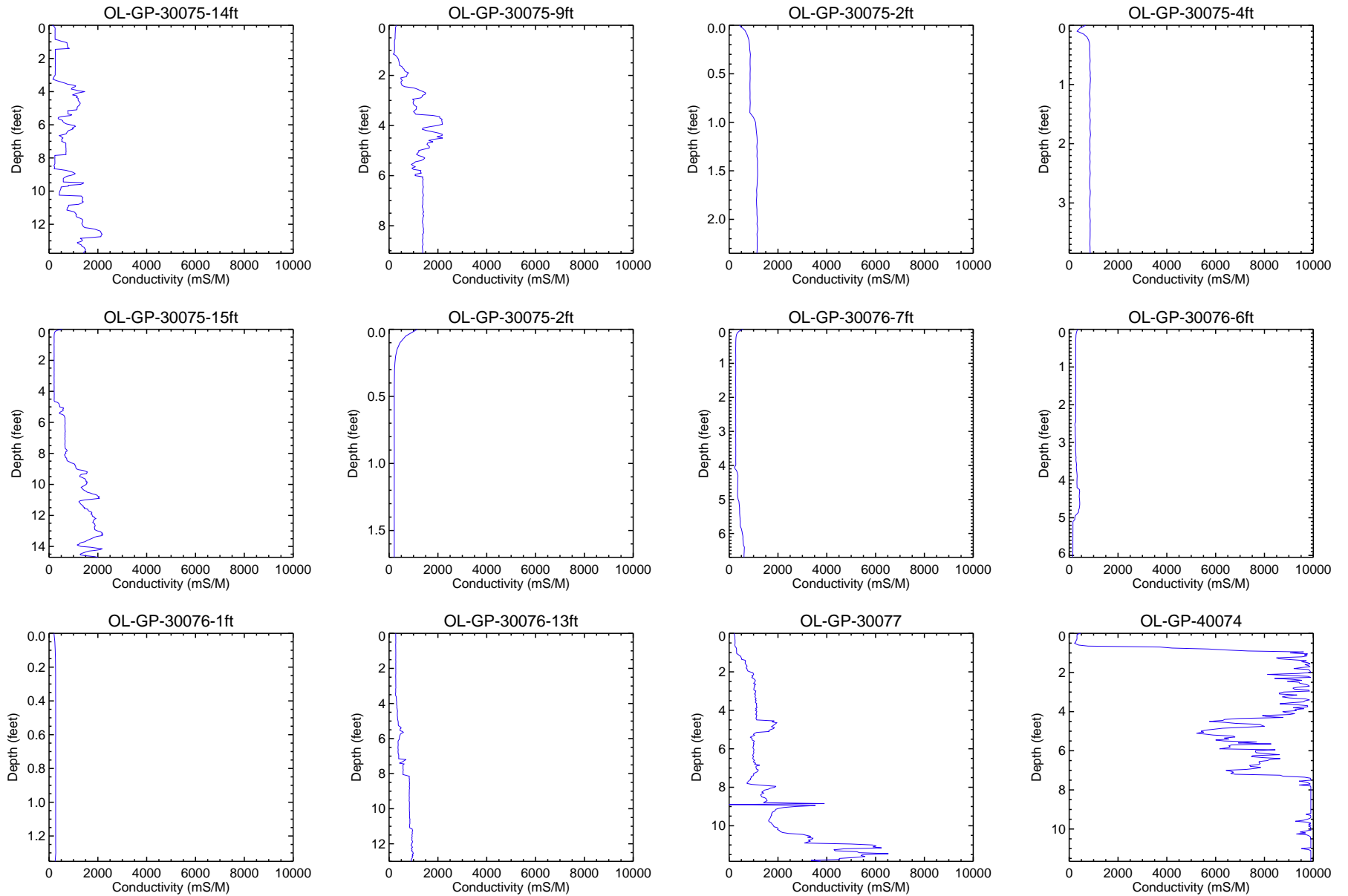
Depth profiles of 2008 conductivity readings in Onondaga Lake.

Notes: Data collected using an SC400 conductivity probe on a FC4000 - Geoprobe Field Instrument - EC. Conductivity measured in milliSeimens per meter (mS/M).



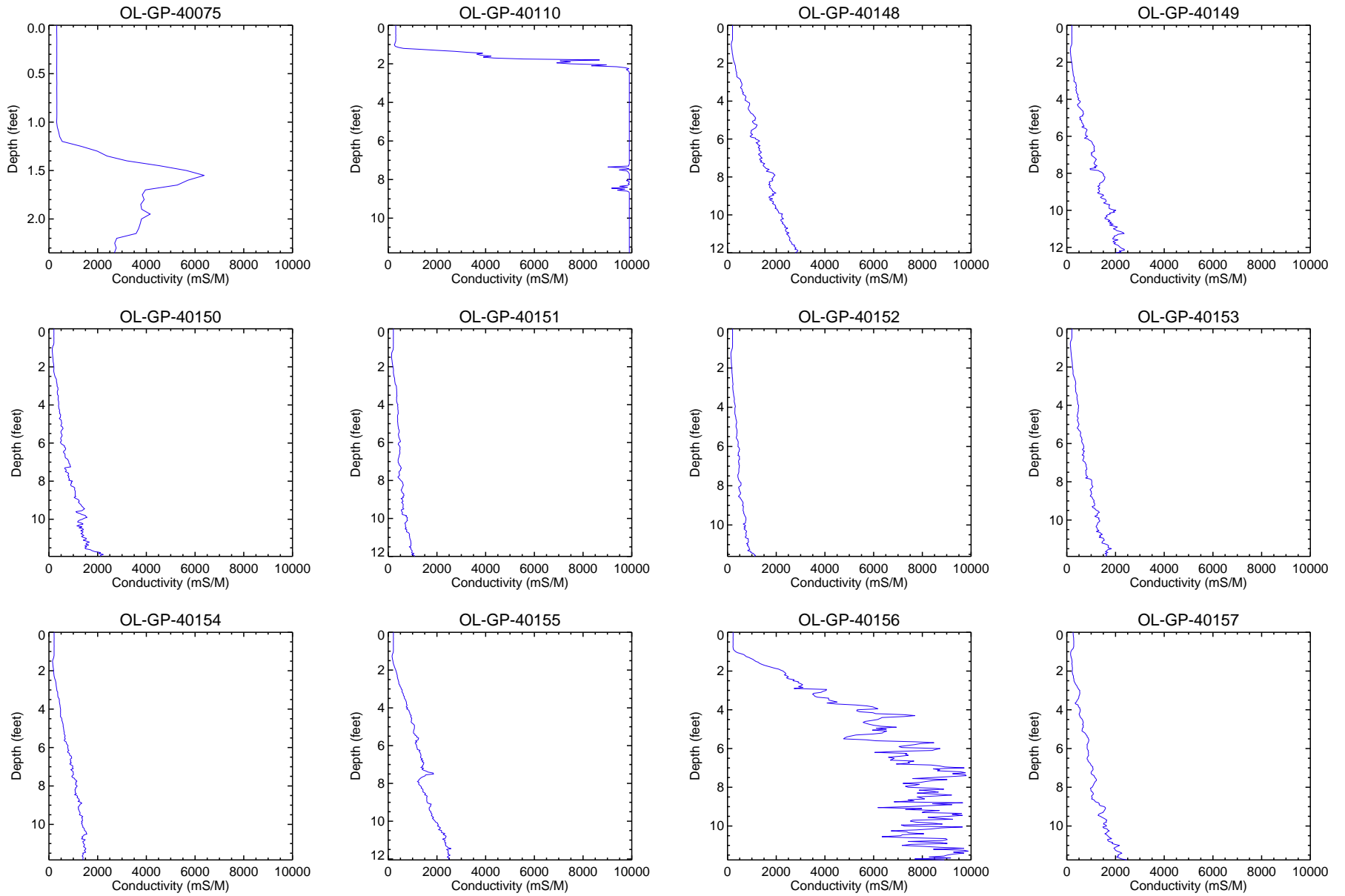
Depth profiles of 2008 conductivity readings in Onondaga Lake.

Notes: Data collected using an SC400 conductivity probe on a FC4000 - Geoprobe Field Instrument - EC. Conductivity measured in milliSeimens per meter (mS/M).



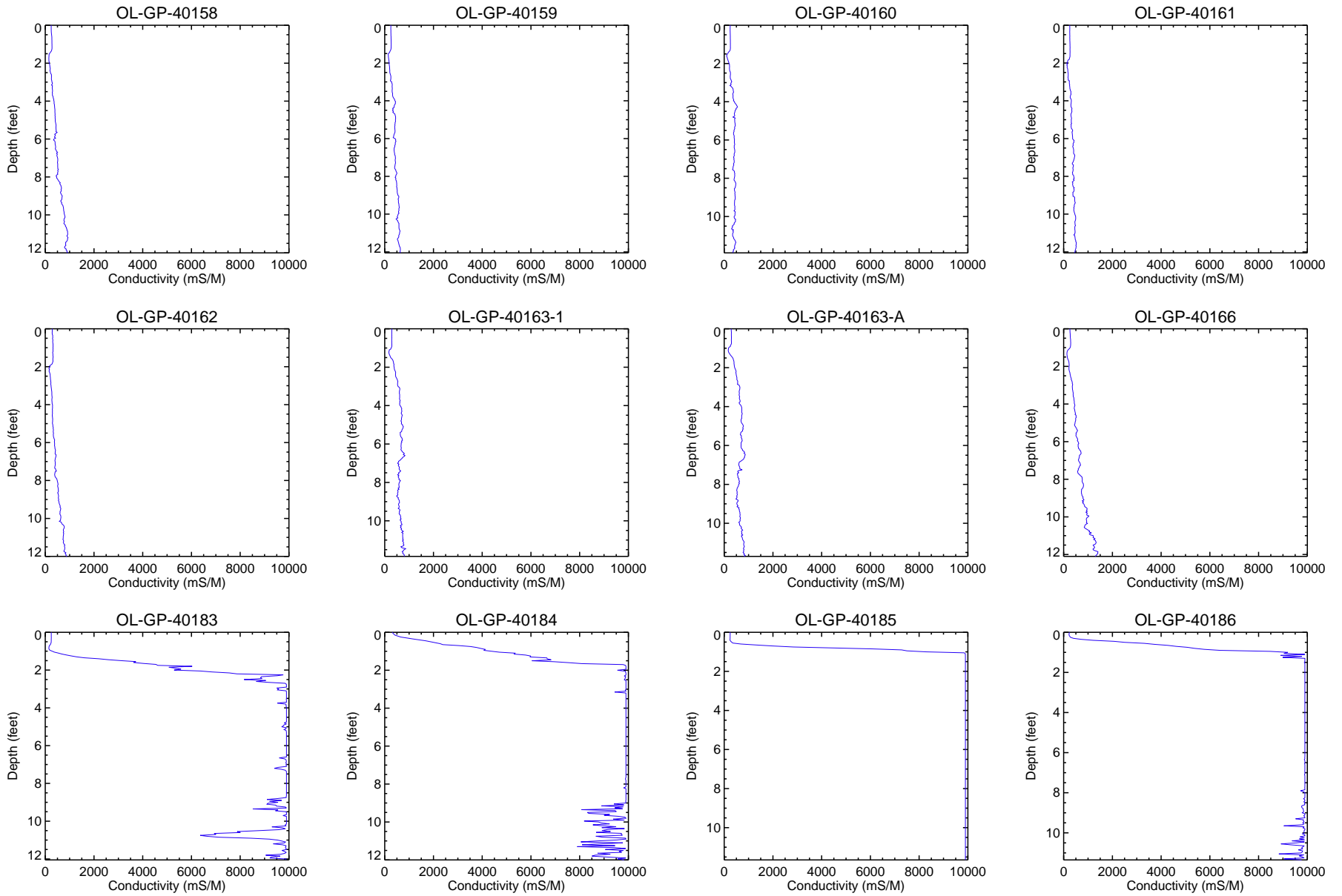
Depth profiles of 2008 conductivity readings in Onondaga Lake.

Notes: Data collected using an SC400 conductivity probe on a FC4000 - Geoprobe Field Instrument - EC. Conductivity measured in milliSeimens per meter (mS/M).



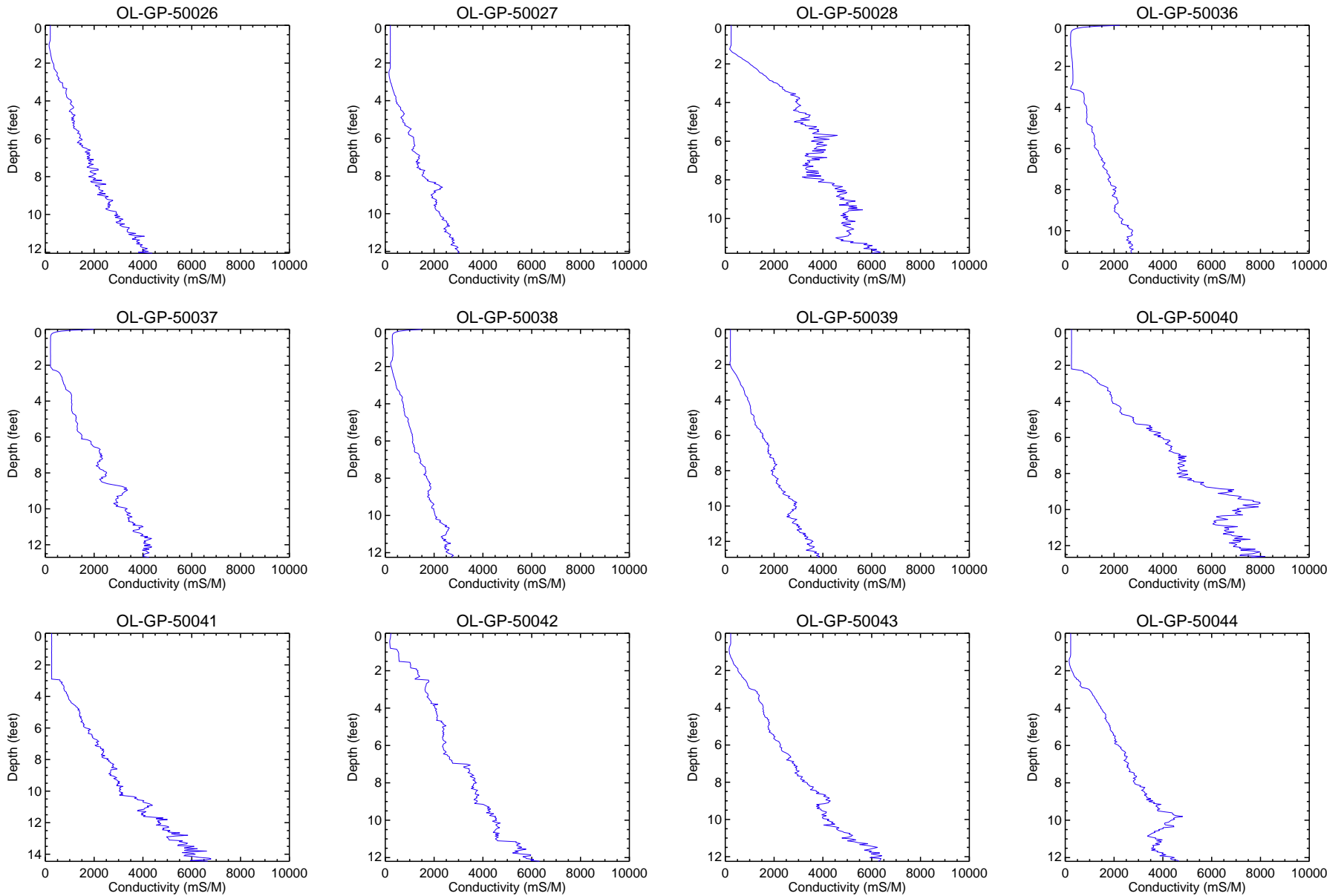
Depth profiles of 2008 conductivity readings in Onondaga Lake.

Notes: Data collected using an SC400 conductivity probe on a FC4000 - Geoprobe Field Instrument - EC. Conductivity measured in milliSeimens per meter (mS/M).



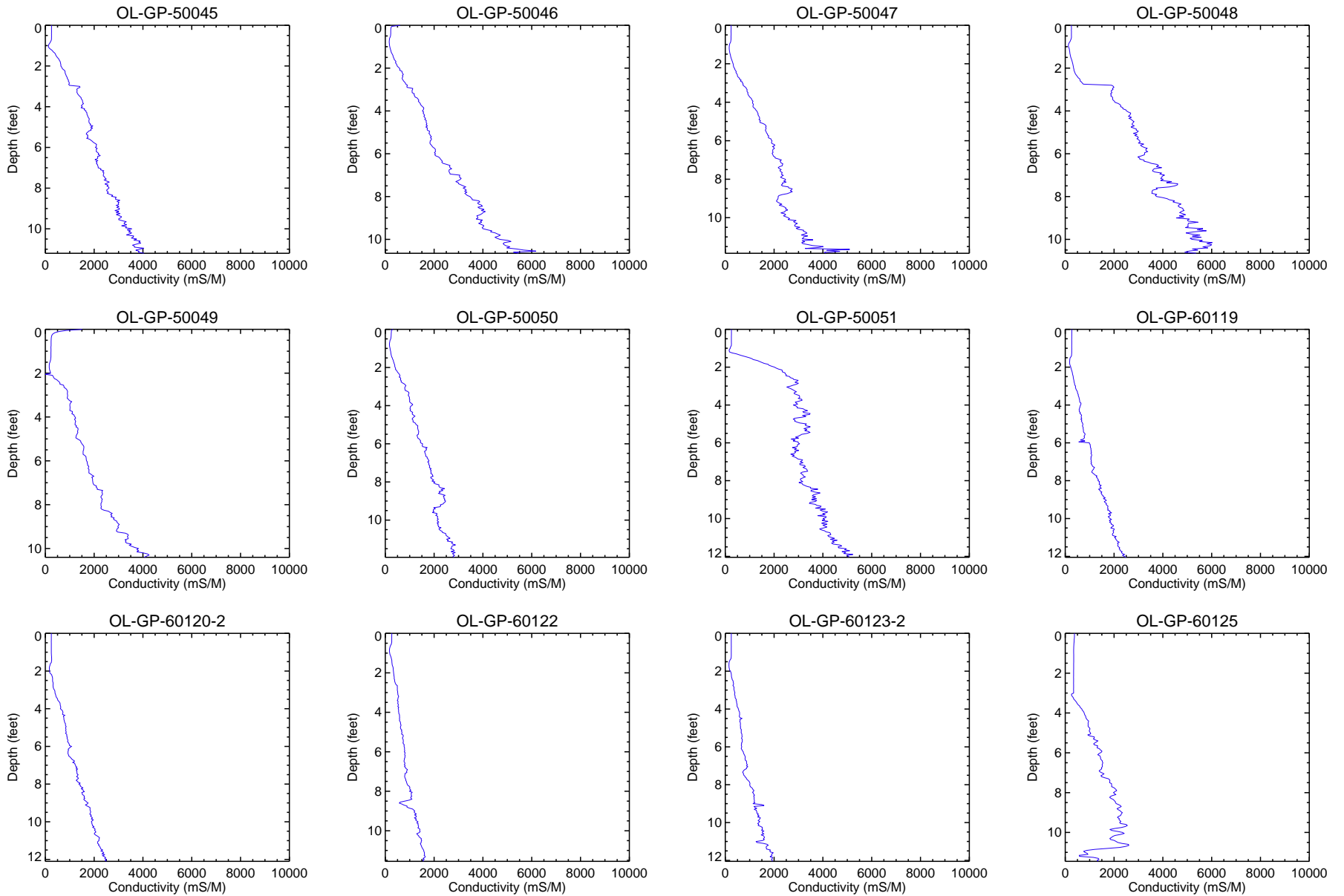
Depth profiles of 2008 conductivity readings in Onondaga Lake.

Notes: Data collected using an SC400 conductivity probe on a FC4000 - Geoprobe Field Instrument - EC. Conductivity measured in milliSeimens per meter (mS/M).



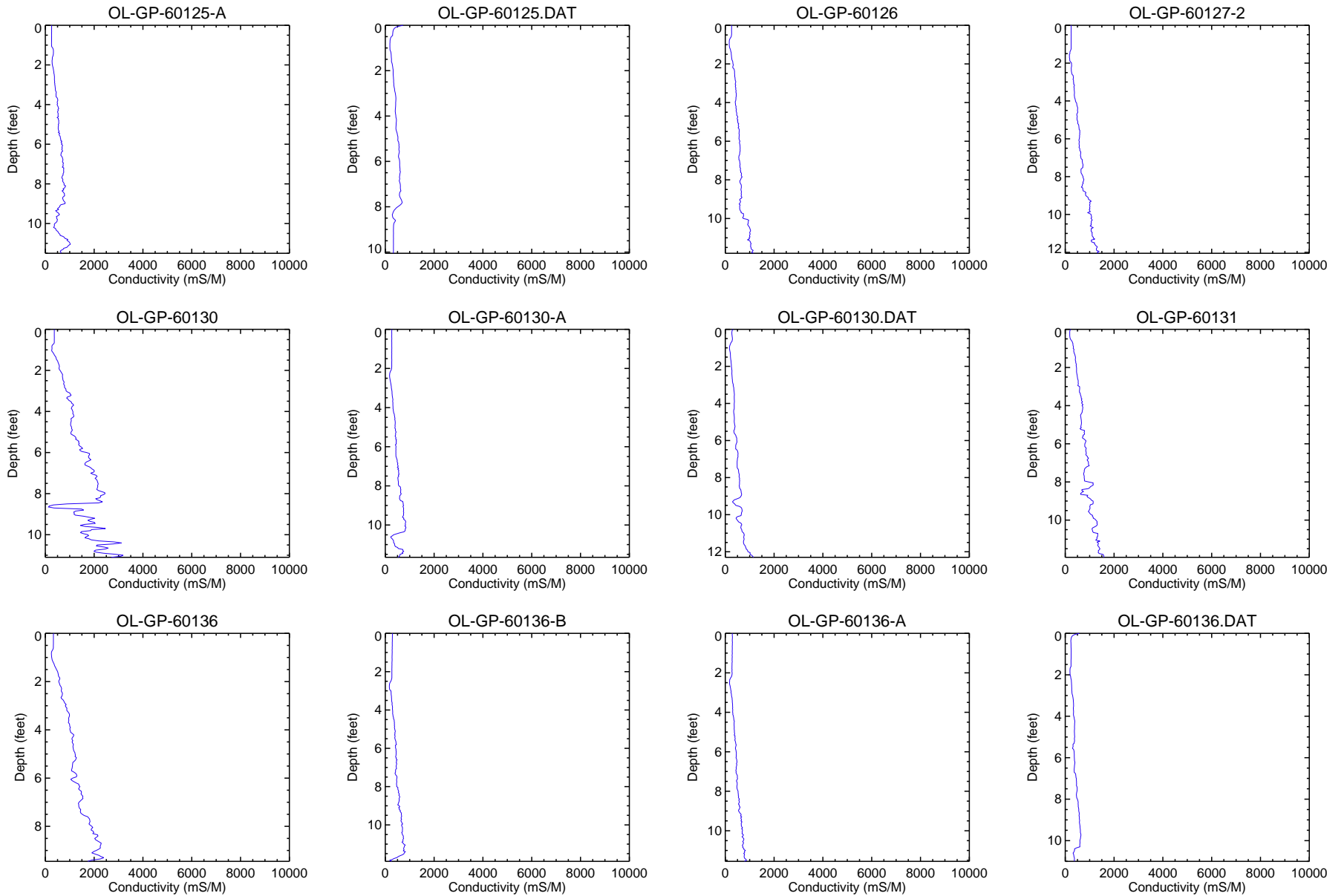
Depth profiles of 2008 conductivity readings in Onondaga Lake.

Notes: Data collected using an SC400 conductivity probe on a FC4000 - Geoprobe Field Instrument - EC. Conductivity measured in milliSeimens per meter (mS/M).



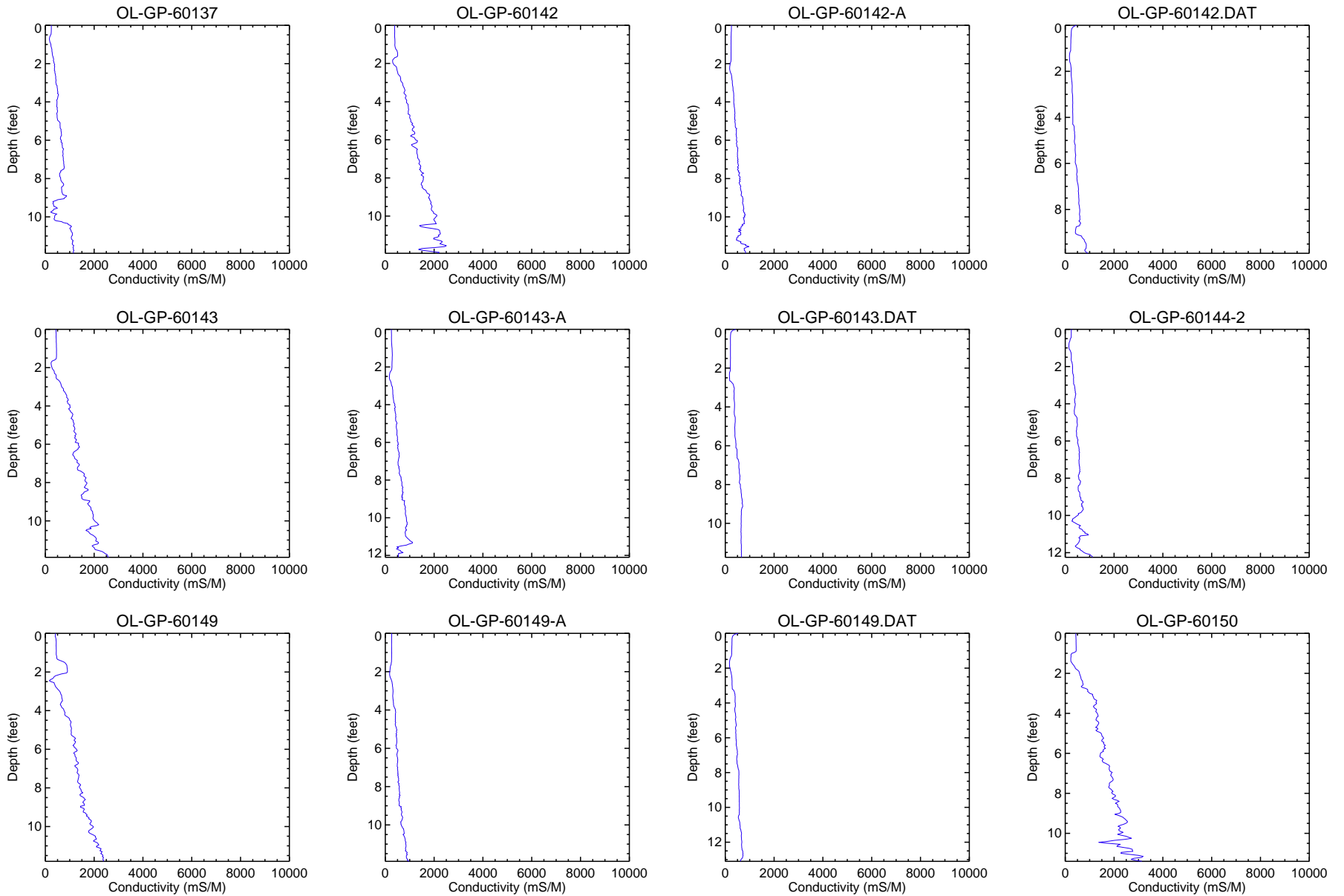
Depth profiles of 2008 conductivity readings in Onondaga Lake.

Notes: Data collected using an SC400 conductivity probe on a FC4000 - Geoprobe Field Instrument - EC. Conductivity measured in milliSeimens per meter (mS/M).



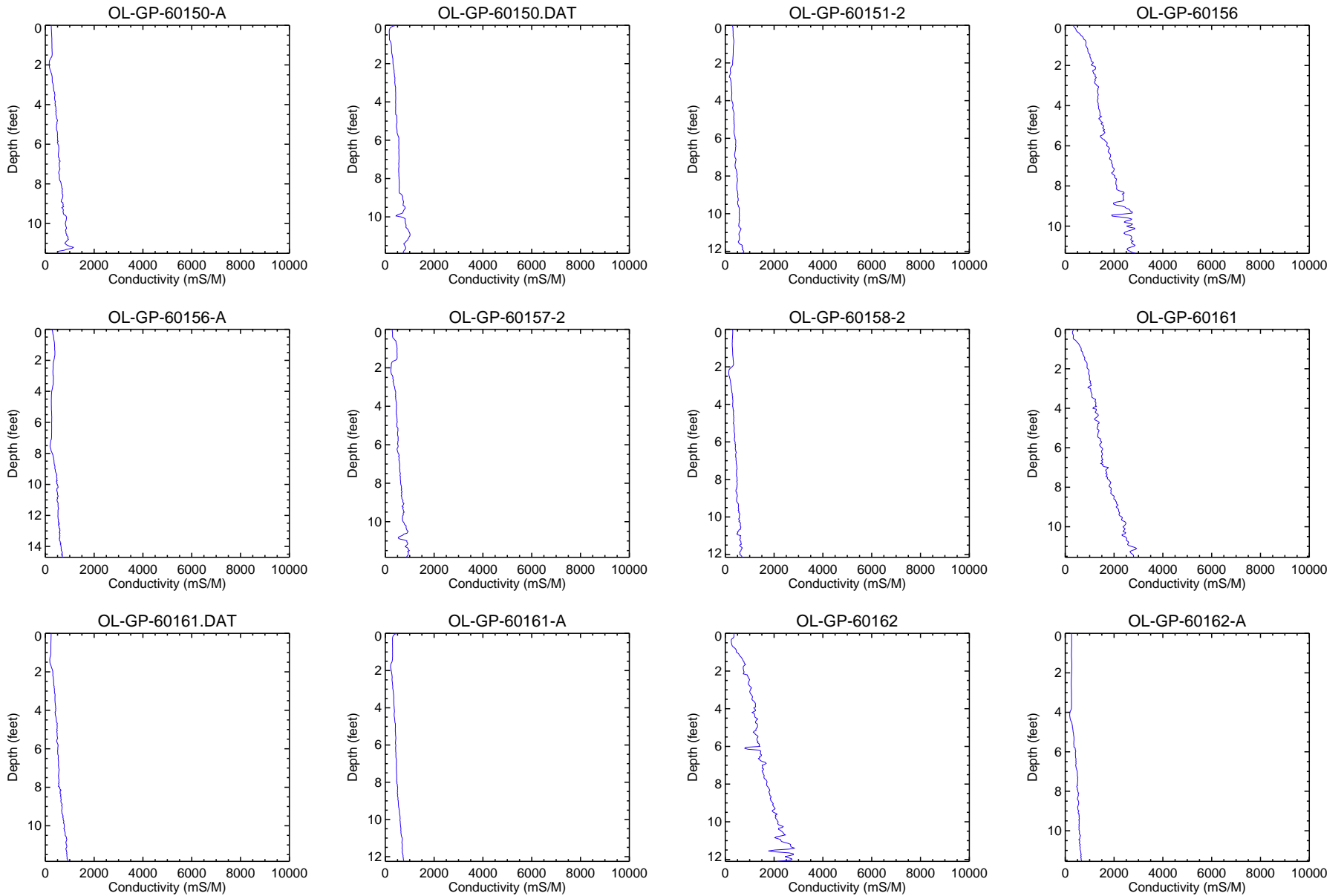
Depth profiles of 2008 conductivity readings in Onondaga Lake.

Notes: Data collected using an SC400 conductivity probe on a FC4000 - Geoprobe Field Instrument - EC. Conductivity measured in milliSeimens per meter (mS/M).



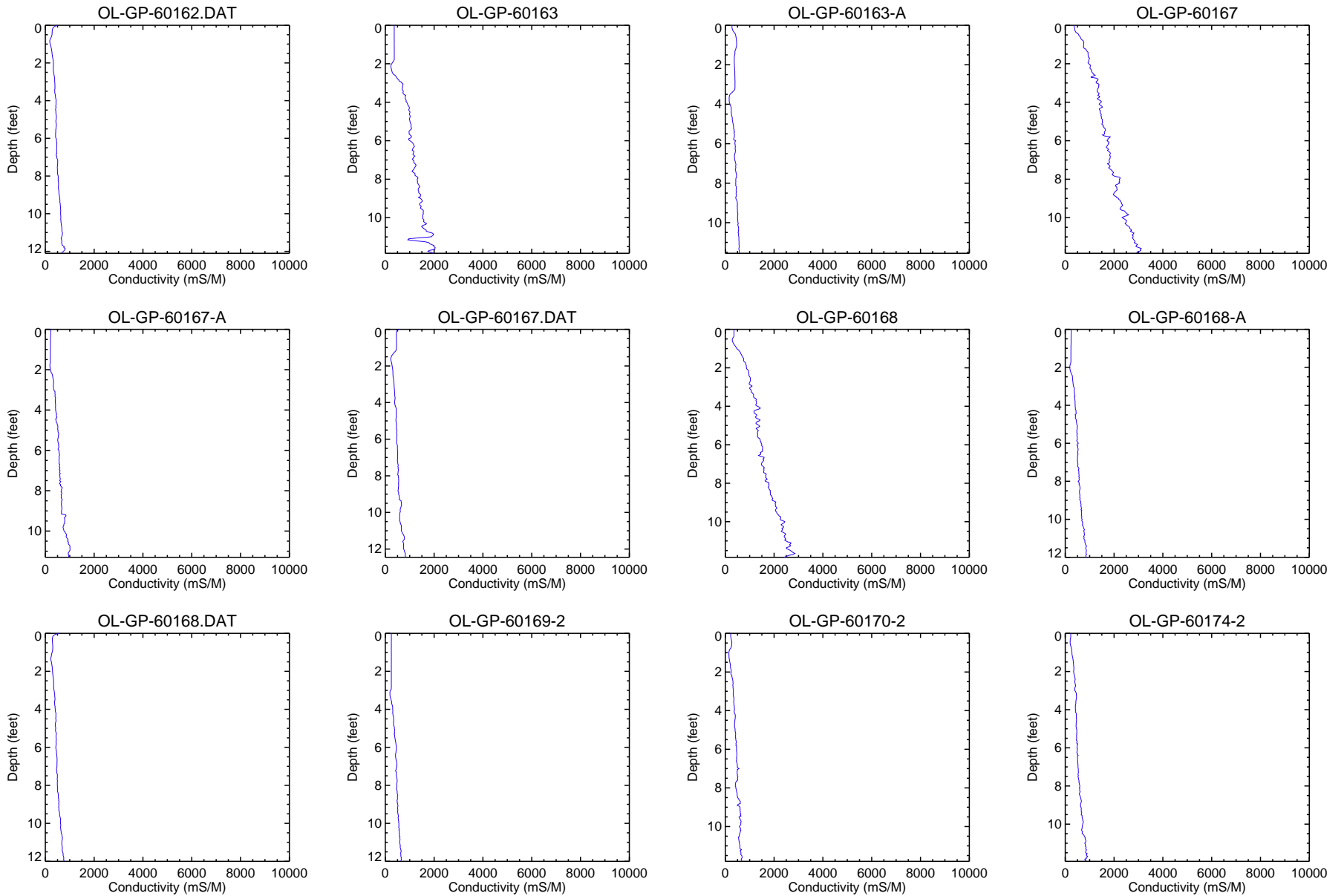
Depth profiles of 2008 conductivity readings in Onondaga Lake.

Notes: Data collected using an SC400 conductivity probe on a FC4000 - Geoprobe Field Instrument - EC. Conductivity measured in milliSeimens per meter (mS/M).



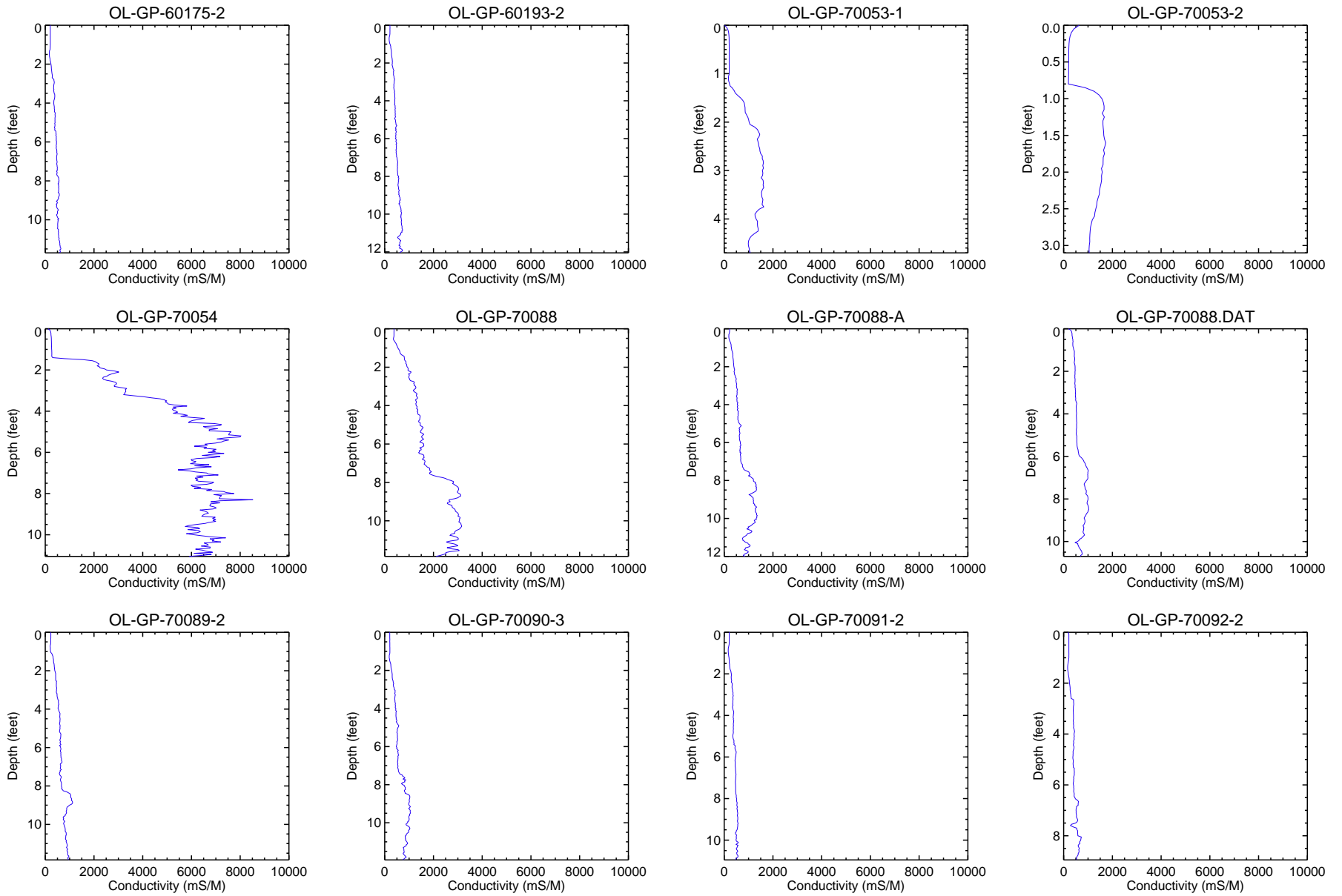
Depth profiles of 2008 conductivity readings in Onondaga Lake.

Notes: Data collected using an SC400 conductivity probe on a FC4000 - Geoprobe Field Instrument - EC. Conductivity measured in milliSeimens per meter (mS/M).



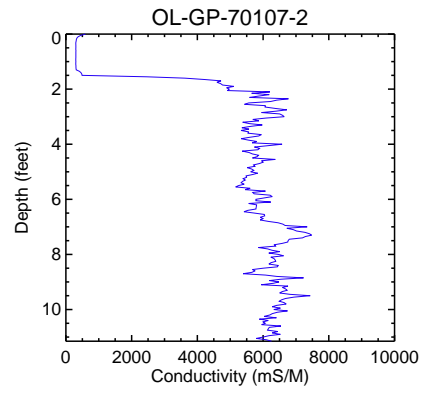
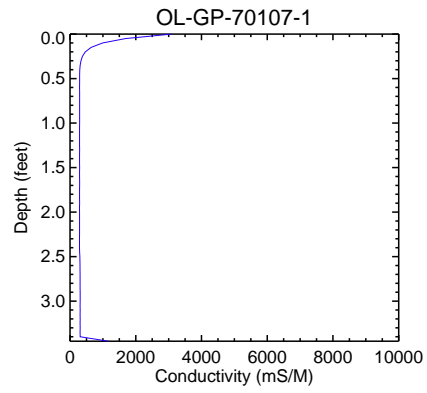
Depth profiles of 2008 conductivity readings in Onondaga Lake.

Notes: Data collected using an SC400 conductivity probe on a FC4000 - Geoprobe Field Instrument - EC. Conductivity measured in milliSeimens per meter (mS/M).



Depth profiles of 2008 conductivity readings in Onondaga Lake.

Notes: Data collected using an SC400 conductivity probe on a FC4000 - Geoprobe Field Instrument - EC. Conductivity measured in milliSeimens per meter (mS/M).



Depth profiles of 2008 conductivity readings in Onondaga Lake.

Notes: Data collected using an SC400 conductivity probe on a FC4000 - Geoprobe Field Instrument - EC. Conductivity measured in milliSeimens per meter (mS/M).