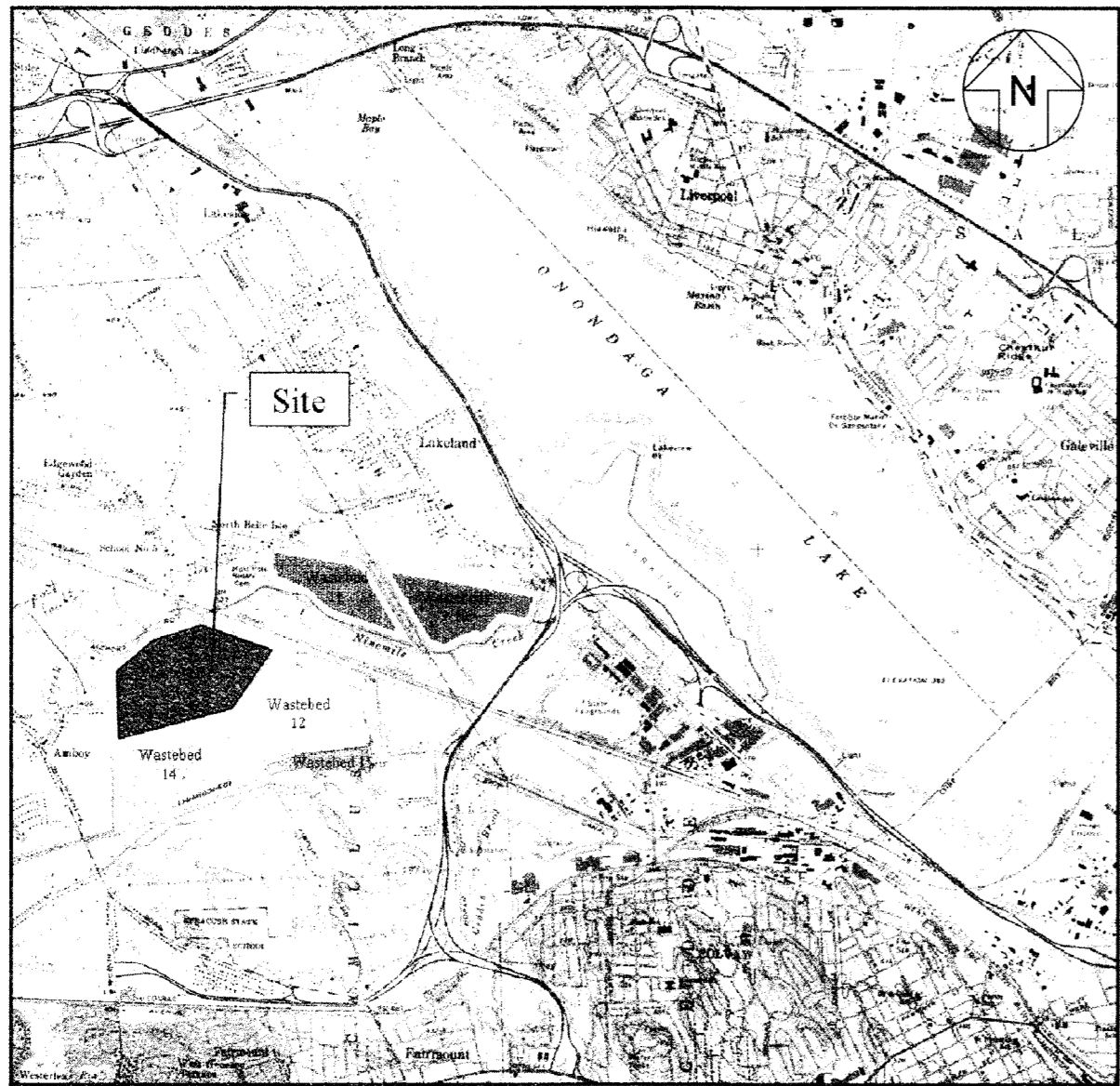


NOTICE: THIS DRAWING, THE PROPERTY OF HONEYWELL, IS FURNISHED SUBJECT TO RETURN ON DEMAND AND THE CONDITION THAT THE INFORMATION AND TECHNOLOGY EMBODIED HEREIN IS TO BE USED ONLY FOR THE PROJECT AND SITE SPECIFICALLY IDENTIFIED HEREON. IT IS NOT TO BE REPRODUCED, COPIED, REPRODUCED, OR TRANSMITTED IN ANY FORM OR BY ANY MEANS, ELECTRONIC OR MECHANICAL, INCLUDING PHOTOCOPYING, RECORDING, OR BY ANY INFORMATION STORAGE AND RETRIEVAL SYSTEM, WITHOUT THE WRITTEN AUTHORIZATION OF HONEYWELL. ANY VIOLATION WILL BE HELD STRICTLY LIABLE FOR ANY VIOLATION WHETHER WILLFUL OR NEGLIGENT.

SEDIMENT CONSOLIDATION AREA BASIN DESIGN

CAMILLUS, NEW YORK

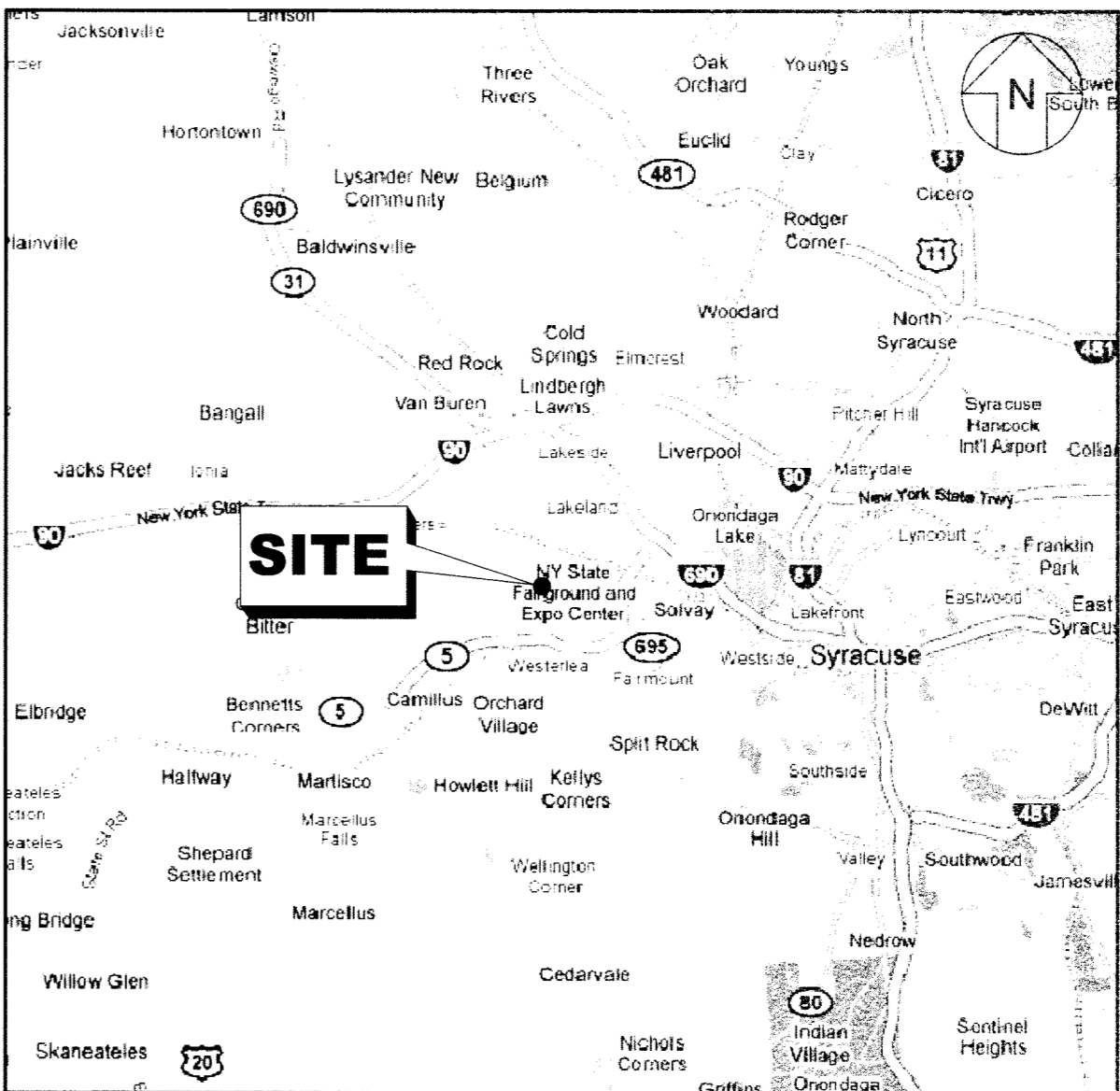
GJ4299.05



SOURCE: PARSONS MAP
VICINITY MAP
NOT TO SCALE

LIST OF DRAWINGS

DRAWING NO.	DRAWING TITLE
444853-201-C-001	COVER SHEET
444853-201-C-002	EXISTING SITE CONDITIONS
444853-201-C-003	BERM AND SUBGRADE GRADING PLAN
444853-201-C-004	LINER SYSTEM GRADING PLAN
444853-201-C-005	TOP OF SECONDARY LINER PLAN FOR SUMPS
444853-201-C-006	TOP OF PRIMARY LINER PLAN FOR SUMPS
444853-201-C-007	GRAVEL FILL PLAN FOR SUMPS
444853-201-C-008	DETAILS I
444853-201-C-009	DETAILS II
444853-201-C-010	DETAILS III
444853-201-C-011	DETAILS IV
444853-201-C-012	DETAILS V

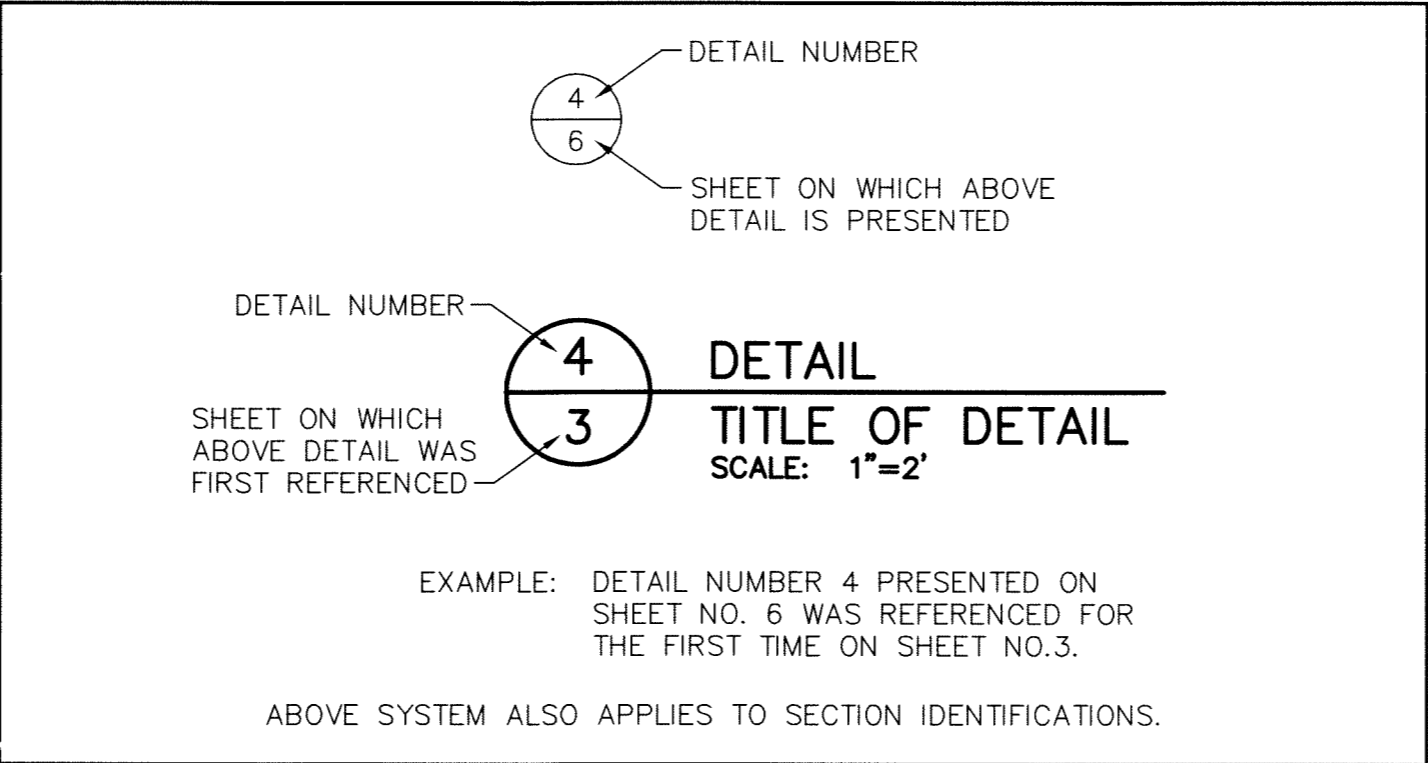


SOURCE: GOOGLE MAP 2009
LOCATION MAP
NOT TO SCALE

PREPARED FOR:

Honeywell

301 PLAINFIELD ROAD, SUITE 330
SYRACUSE, NEW YORK 13212



DETAIL IDENTIFICATION LEGEND

PREPARED BY:

Geosyntec
consultants

PARSONS

1255 ROBERTS BOULEVARD, NW, SUITE 200
KENNESAW, GEORGIA 30144-3694
TELEPHONE: 678.202.9500

301 PLAINFIELD ROAD, SUITE 350
SYRACUSE, NEW YORK 13212
TELEPHONE: 315.451.9560

Geosyntec
consultants

1255 ROBERTS BOULEVARD, N.W., SUITE 200
KENNESAW, GEORGIA 30144 USA
PHONE: 678.202.9500

PARSONS
COMMERCIAL TECHNOLOGY GROUP

OFFICE
301 PLAINFIELD ROAD
SYRACUSE, NY 13212
(315) 451-9560

JOB
444853
WBS

PROJECT TITLE
Honeywell
ONONDAGA LAKE SEDIMENT
MANAGEMENT DESIGN
CAMILLUS, NEW YORK

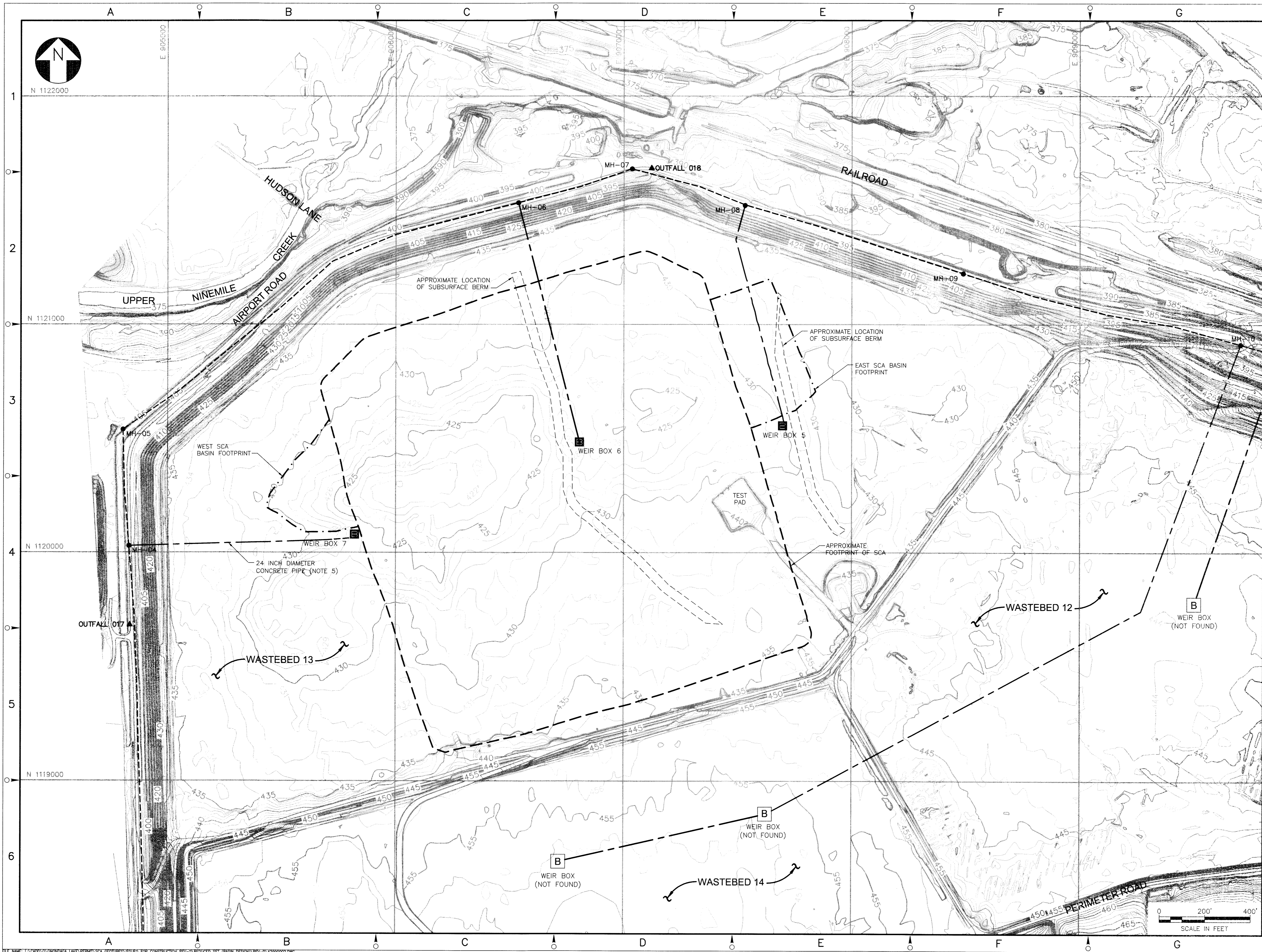
DRAWING TITLE
COVER SHEET

SCALE
SCALE: NOT TO SCALE

DRAWING NO.
444853-201-C-001

REV.
0

NOTICE: DRAWING THE PROPERTY OF HONEYWELL IS FURNISHED SUBJECT TO RETURN ON DEMAND AND THE CONDITION THAT THE INFORMATION AND TECHNOLOGY EMBODIED HEREIN SHALL NOT BE DISCLOSED OR USED, AND THE DRAWING SHALL NOT BE REPRODUCED OR COPIED OR IN ANY MANNER, WITHOUT THE WRITTEN CONSENT OF HONEYWELL. ANY PERSON WHO MAY RECEIVE OR OBSERVE THIS DESIGN WILL BE HELD STRICTLY LIABLE FOR ANY VIOLATION WHETHER WILLFUL OR NEGLIGENT.



NOTES:

1. THE TOPOGRAPHIC CONTOURS SHOWN ON THIS DRAWING WERE OBTAINED FROM A TOPOGRAPHIC MAP COMPILED BY TVGA CONSULTANTS USING PHOTOGRAMMETRIC METHODS BASED ON AERIAL PHOTOGRAPHY PERFORMED ON 6 APRIL 2008. THE MAP WAS COMPILED IN ACCORDANCE WITH NATIONAL MAP ACCURACY STANDARDS FOR 1 INCH EQUAL TO 50 FEET SCALE. THE TOPOGRAPHIC MAP WAS PROVIDED TO GEOSYNTEC BY PARSONS.
2. COORDINATES SHOWN HEREIN ARE EXPRESSED IN U.S. SURVEY FEET AND REFERENCED TO THE NORTH AMERICAN DATUM OF 1983/1996 (NAD 83/96) - NEW YORK STATE PLANE GRID, ZONE CENTRAL. ELEVATIONS SHOWN HEREIN ARE EXPRESSED IN FEET AND REFERENCED TO THE NORTH AMERICAN VERTICAL DATUM OF 1988 (NAVD 88).
3. A FIELD SURVEY SHOULD BE PERFORMED IF NEEDED BEFORE THE CONSTRUCTION OF SCA BASINS.
4. THE EXISTING LEACHATE CONTROL SYSTEM AND NPDES DISCHARGE POINT LOCATIONS WERE OBTAINED FROM A DRAWING PREPARED BY O'BRIEN AND GERE AND PROVIDED TO GEOSYNTEC BY PARSONS.
5. THE INTERIOR LEACHATE COLLECTION PIPES APPEAR TO BE APPROXIMATELY ABOUT 30 FEET BELOW THE EXISTING GROUND BASED ON DRAWING NO. SD 5915-3 TITLED "WASTE DISPOSAL - PREPARE #13 BED FOR OPERATION UNDERDRAINS" BY ALLIED CHEMICAL CORPORATION AND WEIR BOX DEPTH MEASUREMENTS CONDUCTED BY O'BRIEN AND GERE.

LEGEND

- 430 --- EXISTING GROUND ELEVATION (FEET) (NOTE 1)
- EXISTING ROAD
- EXISTING WEIR BOX
- PERIMETER LEACHATE COLLECTION PIPE
- INTERIOR LEACHATE COLLECTION PIPE (NOTE 5)

Geosyntec consultants

1255 ROBERTS BOULEVARD, N.W., SUITE 200
KENNESAW, GEORGIA 30144 USA
PHONE: 678.202.9500

NO.	DESCRIPTION	DATE	DRAWN	CHKD	APPROV
0	ISSUED FOR CONSTRUCTION	SEPT 2011	JHS	RK	JFB
NO.	DESCRIPTION	DATE	DRAWN	CHKD	APPROV
JHS	DRAWN BY	SEPT 2011			
JAS/RK	CHECKED BY	SEPT 2011			
JFB	APPROVED BY	SEPT 2011			
JFB	PROJECT MGR.	SEPT 2011			



PARSONS

COMMERCIAL TECHNOLOGY GROUP

OFFICE: 301 PLAINFIELD ROAD
SYRACUSE, NY 13212
(315) 451-9560

JOB: 444853
WBS:

Honeywell

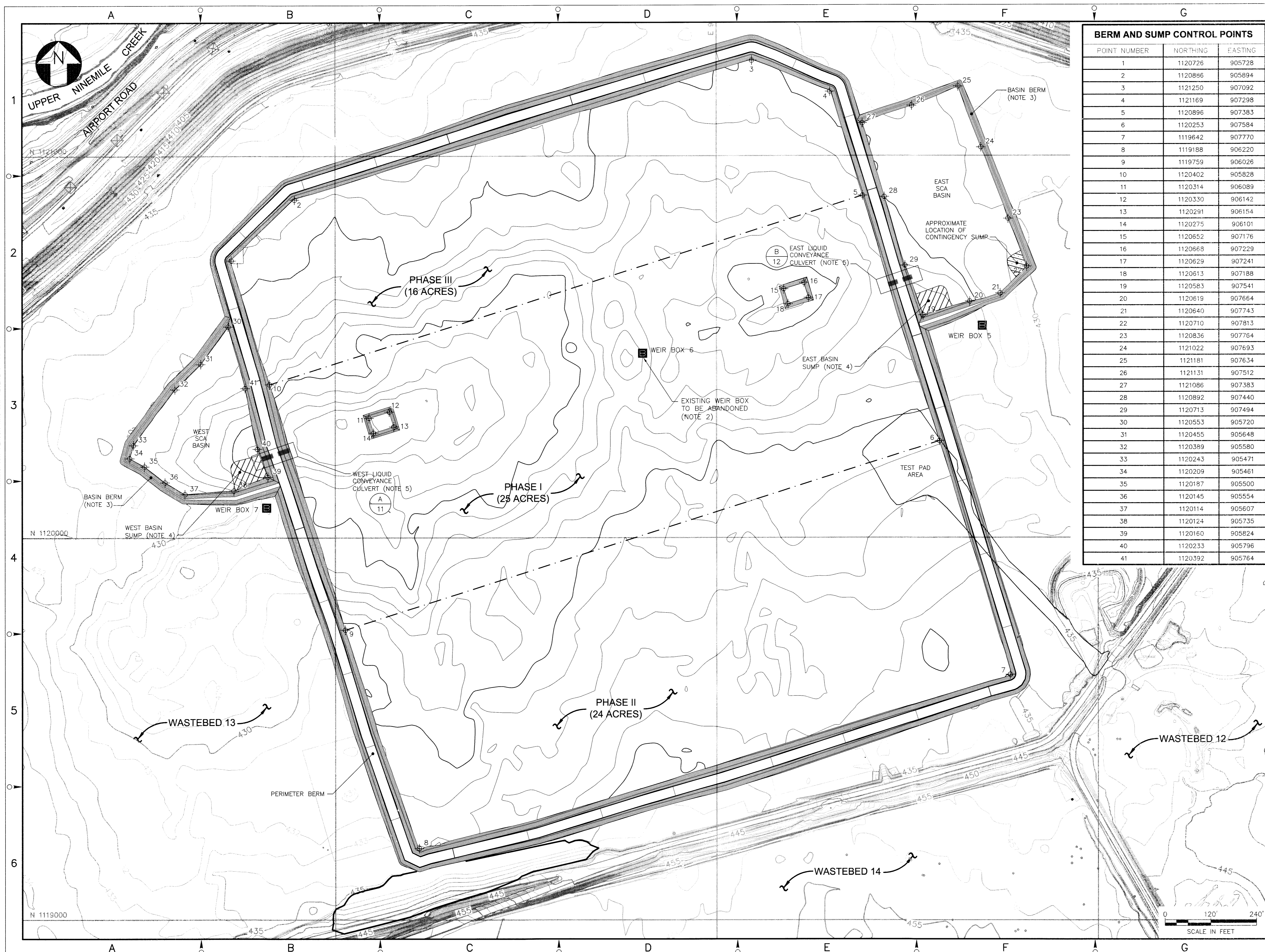
ONONDAGA LAKE SEDIMENT
MANAGEMENT DESIGN
CAMILLUS, NEW YORK

EXISTING SITE CONDITIONS

SCALE: 1" = 200'
(IF PRINTED ON 22x34 SHEET)

DRAWING NO.: 444853-201-C-002
REV: 0

NOTICE: THE PROPERTY OF HONEYWELL IS FURNISHED SUBJECT TO RETURN ON DEMAND AND THE CONDITION THAT THE INFORMATION AND TECHNOLOGY EMBEDDED IN THIS DRAWING, INCLUDING ANY PATENT RIGHTS, ARE NOT TO BE REPRODUCED, COPIED, OR TRANSMITTED IN ANY FORM OR BY ANY MEANS, ELECTRONIC OR MECHANICAL, INCLUDING PHOTOCOPYING, RECORDING, OR BY ANY INFORMATION STORAGE AND RETRIEVAL SYSTEM, WITHOUT THE WRITTEN PERMISSION OF HONEYWELL. ANY VIOLATION WILL BE HELD STRICTLY LIABLE FOR ANY VIOLATION, WHETHER WILLFUL OR NEGLIGENT.



BERM AND SUMP CONTROL POINTS		
POINT NUMBER	NORTHING	EASTING
1	1120726	905728
2	1120886	905894
3	1121250	907092
4	1121169	907298
5	1120896	907383
6	1120253	907584
7	1119642	907770
8	1119188	906220
9	1119759	906026
10	1120402	905828
11	1120314	906089
12	1120330	906142
13	1120291	906154
14	1120275	906101
15	1120552	907176
16	1120668	907229
17	1120629	907241
18	1120613	907188
19	1120583	907541
20	1120619	907664
21	1120640	907743
22	1120710	907813
23	1120836	907764
24	1121022	907693
25	1121181	907634
26	1121131	907512
27	1121086	907383
28	1120892	907440
29	1120713	907494
30	1120553	905720
31	1120455	905648
32	1120389	905580
33	1120243	905471
34	1120209	905461
35	1120187	905500
36	1120145	905554
37	1120114	905607
38	1120124	905735
39	1120160	905824
40	1120233	905796
41	1120392	905764

- NOTES:
- THE TOPOGRAPHIC CONTOURS SHOWN ON THIS DRAWING WERE OBTAINED FROM A TOPOGRAPHIC MAP COMPILED BY TVGA CONSULTANTS USING PHOTOGRAMMETRIC METHODS BASED ON AERIAL PHOTOGRAPHY PERFORMED ON 6 APRIL 2009. THE MAP WAS COMPILED IN ACCORDANCE WITH NATIONAL MAP ACCURACY STANDARDS FOR 1 INCH EQUAL TO 50 FEET SCALE. THE TOPOGRAPHIC MAP WAS PROVIDED TO GEOSYNTEC BY PARSONS.
 - WEIR BOX NO. 6 SHALL BE ABANDONED BEFORE BEGINNING CONSTRUCTION PER THE SCA DESIGN DRAWINGS.
 - THE SCA BASIN BERMS SHALL HAVE A MINIMUM HEIGHT OF 5 FEET WITH 2.5H:1V SIDE SLOPES.
 - EXCAVATIONS SHALL BE PERFORMED AT PROPOSED SUMP LOCATIONS PER THE GRADES PRESENTED ON DRAWINGS NO. 4 AND 5. THESE GRADES WILL BE UPDATED AFTER PRELOAD IS REMOVED.
 - THE TEMPORARY LIQUID CONVEYANCE CULVERT SHALL CONSIST OF (4) 24 INCH DIAMETER PIPES AT A SLOPE OF 1%. THESE PIPES SHALL BE PLUGGED WITH BENTONITE BEFORE CLOSURE PER THE DETAILS SHOWN IN THE SCA DESIGN DRAWINGS.
- LEGEND
- 430 EXISTING GROUND ELEVATION (FEET) (NOTE 1)
 - 440 PROPOSED PERIMETER BERM (NOTE 4)
 - EXISTING ROAD
 - EXISTING WEIR BOX
 - WEIR BOX 5
 - PHASE BOUNDARY

Geosyntec
consultants
1255 ROBERTS BOULEVARD, N.W., SUITE 200
KENNESAW, GEORGIA 30144 USA
PHONE: 678.202.9500

0	ISSUED FOR CONSTRUCTION	SEPT 2011	JHS	RK	JFB
---	-------------------------	-----------	-----	----	-----

NO.	DESCRIPTION	DATE	DATE	DATE	DATE	DATE	DATE	DATE	DATE	
DRAWN BY	JHS	SEPT 2011	CHECKED BY	JAS/RK	SEPT 2011	APPROVED BY	JFB	SEPT 2011	PROJECT MGR.	JFB

PARSONS
COMMERCIAL TECHNOLOGY GROUP

OFFICE: 301 PLAINFIELD ROAD
SYRACUSE, NY 13212
(315) 451-9560

JOB: 444853

PROJECT TITLE: **Honeywell**
ONONDAGA LAKE SEDIMENT
MANAGEMENT DESIGN
CAMILLUS, NEW YORK

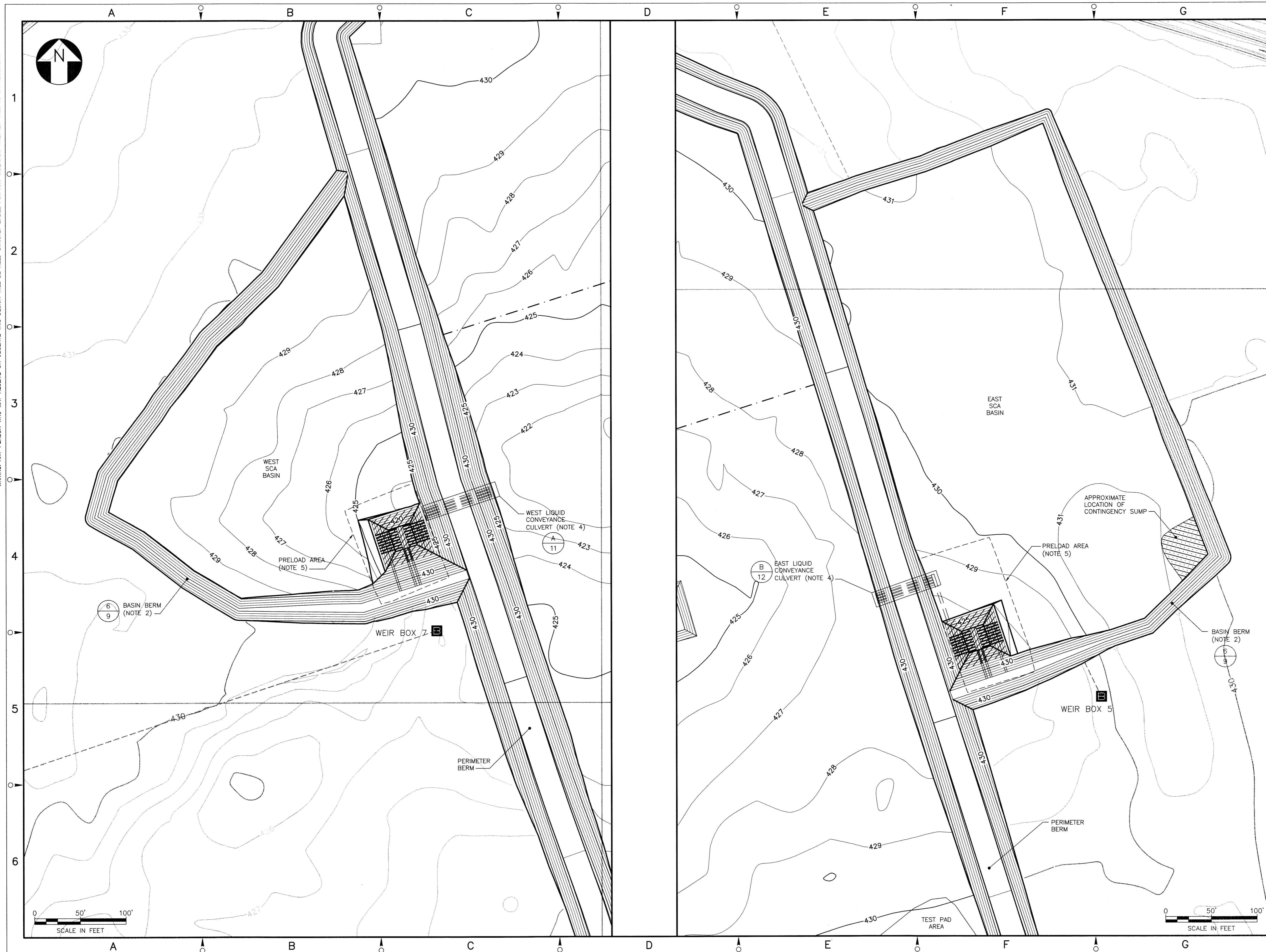
DRAWING TITLE: **BERM AND SUBGRADE
GRADING PLAN**

SCALE: 1" = 120'
(IF PRINTED ON 22x34 SHEET)

DRAWING NO: **444853-201-C-003**

REV: 0

NOTICE: DRAWING, THE PROPERTY OF HONEYWELL, IS FURNISHED SUBJECT TO RETURN ON DEMAND AND THE CONTRACTOR SHALL BE RESPONSIBLE FOR THE INFORMATION AND TECHNOLOGY FURNISHED HEREIN. THIS DRAWING IS NOT TO BE REPRODUCED OR COPIED IN WHOLE OR IN PART EXCEPT AS PREVIOUSLY AUTHORIZED IN WRITING. ANY PERSON WHO MAY RECEIVE OR OBSERVE THIS DESIGN SHALL BE HELD STRICTLY LIABLE FOR ANY VIOLATION WHETHER WILLFUL OR NEGLIGENT.



- NOTES:**
1. THE TOPOGRAPHIC CONTOURS SHOWN ON THIS DRAWING WERE OBTAINED FROM A TOPOGRAPHIC MAP COMPILED BY TVCA CONSULTANTS USING PHOTOGRAMMETRIC METHODS BASED ON AERIAL PHOTOGRAPHY PERFORMED ON 6 APRIL 2008. THE MAP WAS COMPILED IN ACCORDANCE WITH NATIONAL MAP ACCURACY STANDARDS FOR 1 INCH EQUAL TO 50 FEET SCALE. THE TOPOGRAPHIC MAP WAS PROVIDED TO GEOSYNTEC BY PARSONS.
 2. THE SCA BASIN BERM SHALL HAVE A MINIMUM HEIGHT OF 5 FEET WITH 2.5H:1V SIDE SLOPES.
 3. EXCAVATIONS SHALL BE PERFORMED AT PROPOSED SUMP LOCATIONS PER THE GRADES PRESENTED ON THIS DRAWING AND DRAWING NO. 5. THESE GRADES WILL BE UPDATED AFTER PRELOAD IS REMOVED.
 4. THE TEMPORARY LIQUID CONVEYANCE CULVERT SHALL CONSIST OF (4) 24 INCH DIAMETER PIPES AT A SLOPE OF 1%. THESE PIPES SHALL BE PLUGGED WITH BENTONITE BEFORE CLOSURE PER THE SCA DESIGN DRAWINGS.
 5. THE BASIN SUMP AREAS SHOULD BE PRELOADED PRIOR TO CONSTRUCTION. A PRELOAD CONSISTING OF SET OF SOIL SHALL BE PLACED OVER THE BOUNDARY SHOWN ON THIS DRAWING FOR A MINIMUM PERIOD OF THREE MONTHS. LIQUID CONVEYANCE CULVERT INLET AND OUTLET ELEVATIONS WILL BE PROVIDED BASED ON THE GRADES ACHIEVED AFTER PRELOAD TO PROVIDE FOR A MINIMUM SLOPE OF 1%.
 6. PROTECTION MEASURES FOR WIND UPLIFT WILL BE SELECTED BEFORE INSTALLATION OF THE LINER SYSTEM.

LEGEND

- 430 — EXISTING GROUND ELEVATION (FEET) (NOTE 1)
- 440 — PROPOSED PERIMETER BERM
- — EXISTING ROAD
- EXISTING WEIR BOX
- WEIR BOX 5
- PHASE BOUNDARY

Geosyntec
consultants

1255 ROBERTS BOULEVARD, N.W., SUITE 200
KENNESAW, GEORGIA 30144 USA
PHONE: 678.202.9500

0	ISSUED FOR CONSTRUCTION	SEPT 2011	JHS	RK	JFB
NO.	DESCRIPTION	DATE	DRAWN	CHK'D	APPROV'D
DRAWN BY	JHS	DATE	SEPT 2011		
CHECKED BY	JAS/RK	DATE	SEPT 2011		
APPROVED BY	JFB	DATE	SEPT 2011		
PROJECT MGR.	JFB	DATE	SEPT 2011		

PARSONS
COMMERCIAL TECHNOLOGY GROUP

OFFICE: 301 PLAINFIELD ROAD
SYRACUSE, NY 13212
(315) 451-9560

JOB: 444853
WBS:

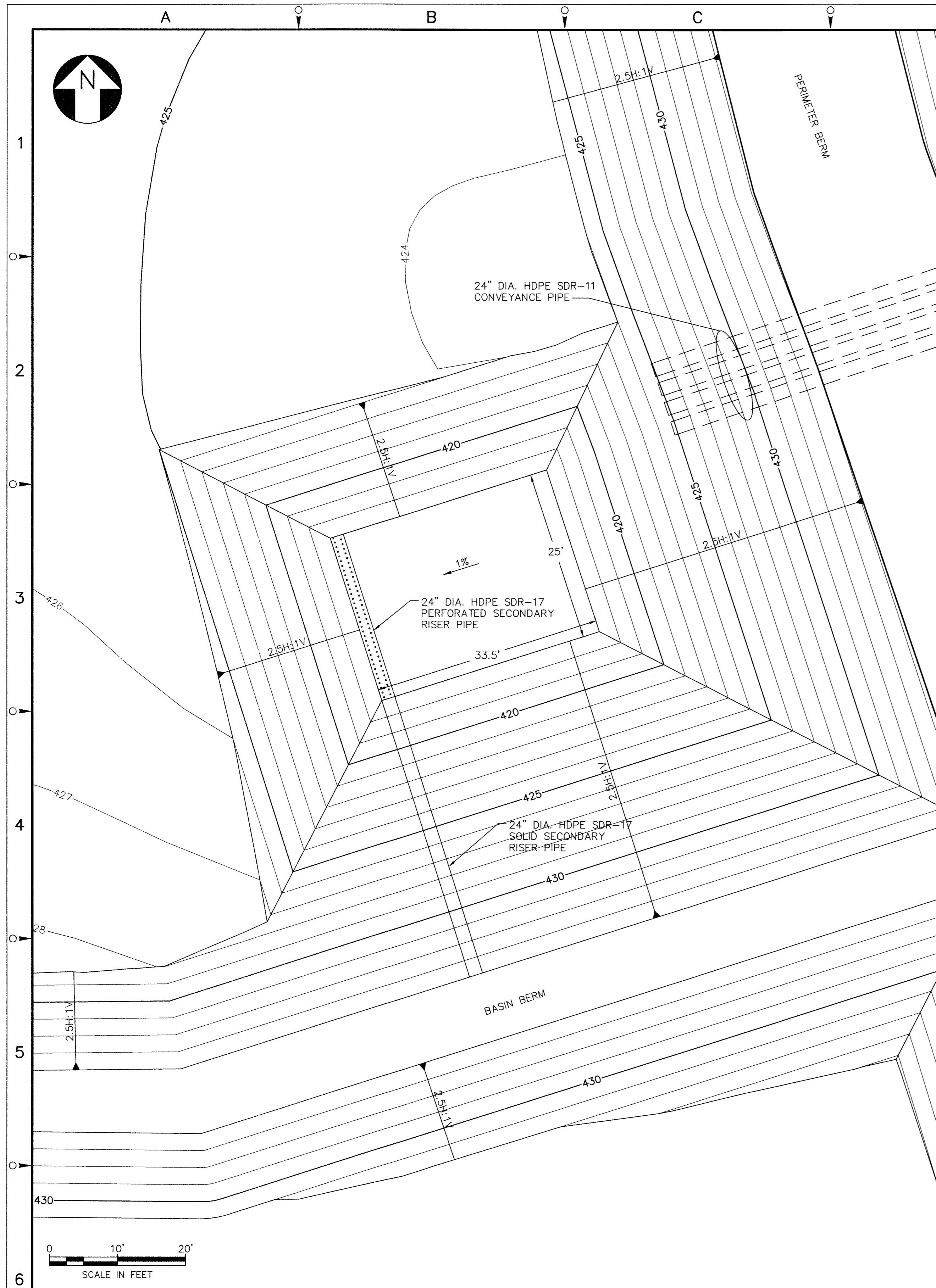
PROJECT TITLE:
Honeywell
ONONDAGA LAKE SEDIMENT
MANAGEMENT DESIGN
CAMILLUS, NEW YORK

DRAWING TITLE:
LINER SYSTEM
GRADING PLAN

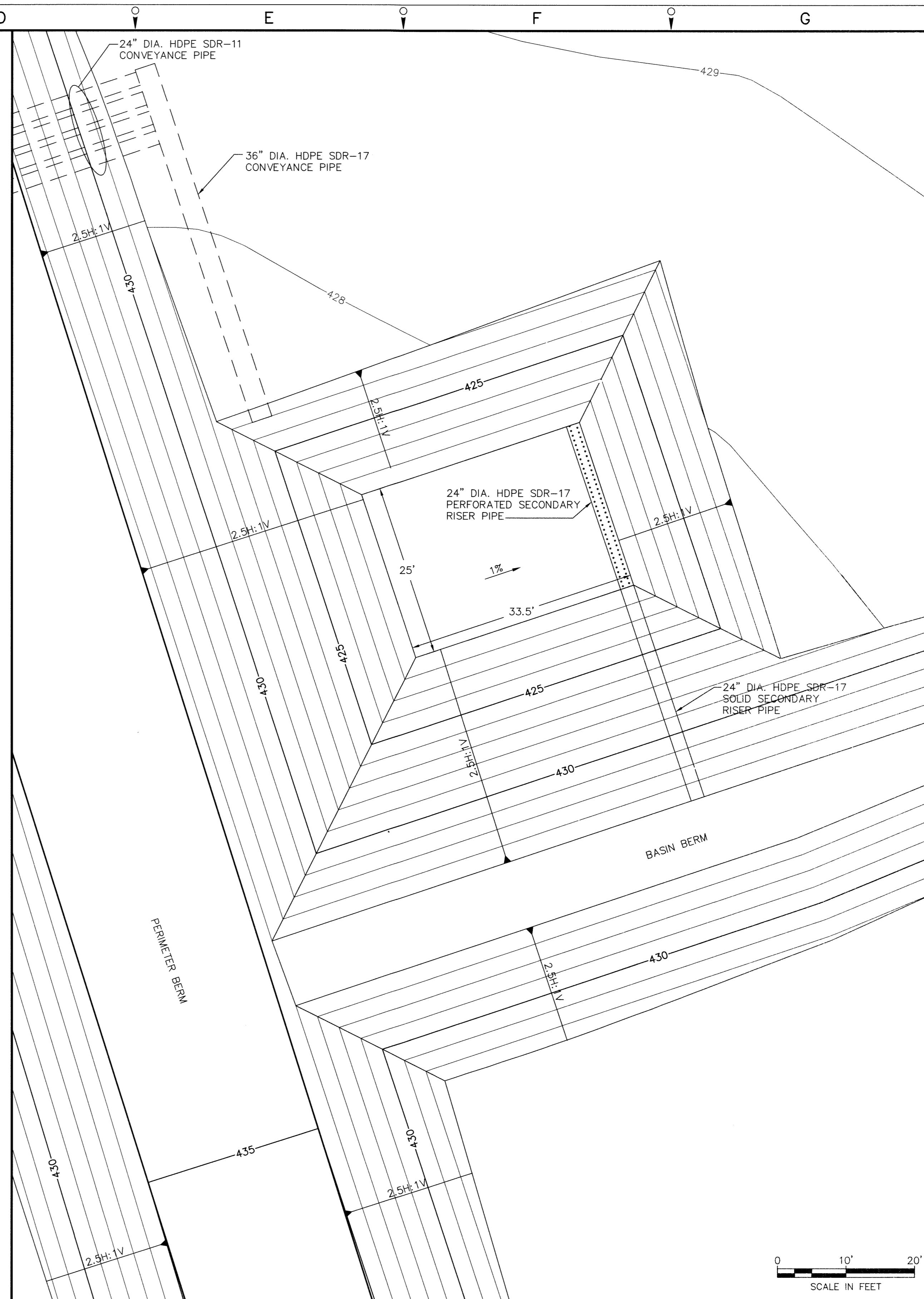
SCALE: 1" = 50'
(IF PRINTED ON 22x34 SHEET)

DRAWING NO.: 444853-201-C-004
REV. 0

NOTICE: THIS DRAWING, THE PROPERTY OF HONEYWELL, IS FURNISHED SUBJECT TO RETURN ON DEMAND AND THE CONDITION THAT THE INFORMATION AND TECHNOLOGY EMBODIED HEREIN SHALL BE USED ONLY FOR THE PROJECT AND SITE SPECIFICALLY IDENTIFIED HEREON AND NOT BE REPRODUCED, COPIED, OR TRANSMITTED IN ANY FORM OR BY ANY MEANS, ELECTRONIC OR MECHANICAL, INCLUDING PHOTOCOPYING, RECORDING, OR BY ANY INFORMATION STORAGE AND RETRIEVAL SYSTEM, WITHOUT THE WRITTEN PERMISSION OF HONEYWELL. ANY PERSON WHO MAY RECEIVE OR OBSERVE THIS DESIGN WILL BE HELD STRICTLY LIABLE FOR ANY VIOLATION WHETHER WILLFUL OR NEGLIGENT.



1
-
DETAIL
WEST SUMP TOP OF SECONDARY LINER
SCALE: 1" = 10'



2
-
DETAIL
EAST SUMP TOP OF SECONDARY LINER
SCALE: 1" = 10'

NOTE:
1. THE SUMP GRADES SHOWN ON THIS DRAWING ARE FOR THE SECONDARY LINER AND GEOCOMPOSITE LEAK COLLECTION LAYER.

Geosyntec[®]
consultants
1255 ROBERTS BOULEVARD, N.W., SUITE 200
KENNESAW, GEORGIA 30144 USA
PHONE: 678.202.8500

0	ISSUED FOR CONSTRUCTION	SEPT 2011	JHS	RK	JFB
NO.	DESCRIPTION	DATE	DRAWN	CHK'D	APP'D
DRAWN BY	JHS	DATE	SEPT 2011	SEAL	
CHECKED BY	JAS/RK	DATE	SEPT 2011		
APPROVED BY	JFB	DATE	SEPT 2011		
PROJECT MGR.	JFB	DATE	SEPT 2011		

PARSONS
COMMERCIAL TECHNOLOGY GROUP

OFFICE: 301 PLAINFIELD ROAD
SYRACUSE, NY 13212
(315) 451-9560
JOB: 444853
WBS:

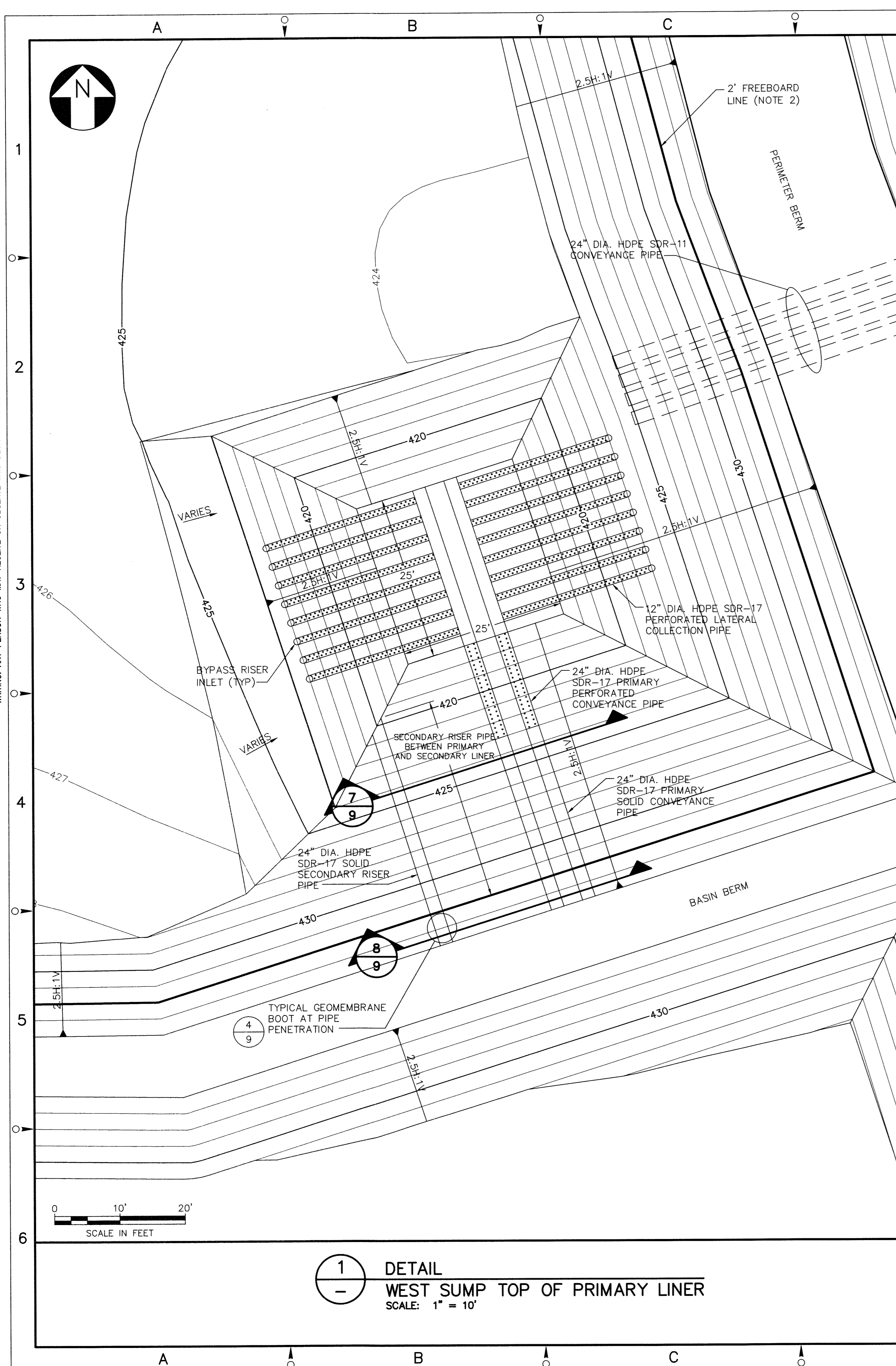
PROJECT TITLE
Honeywell
ONONDAGA LAKE SEDIMENT
MANAGEMENT DESIGN
CAMILLUS, NEW YORK

DRAWING TITLE
TOP OF SECONDARY
LINER PLAN FOR SUMPS

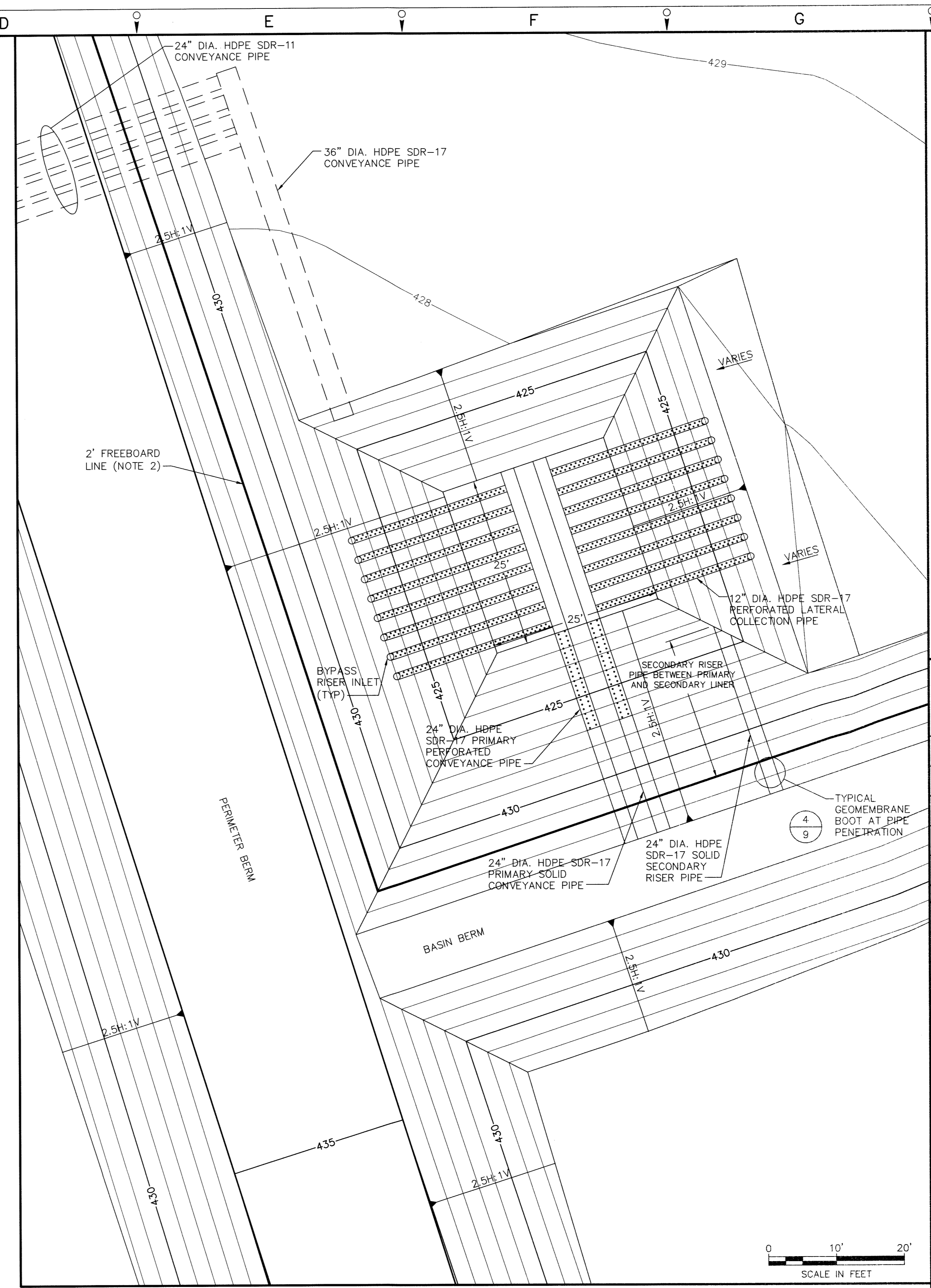
SCALE: 1" = 20'
(IF PRINTED ON 22x34 SHEET)

DRAWING NO. 444853-201-C-005
REV. 0

NOTICE: THIS DRAWING, THE PROPERTY OF HONEYWELL, IS FURNISHED SUBJECT TO RETURN ON DEMAND AND THE CONDITION THAT THE INFORMATION AND TECHNOLOGY EMBODIED HEREIN SHALL NOT BE DISCLOSED OR USED AND THE DRAWING SHALL NOT BE REPRODUCED OR COPIED IN WHOLE OR IN PART EXCEPT AS PREVIOUSLY AUTHORIZED IN WRITING. ANY PERSON WHO MAY RECEIVE OR OBSERVE THIS DESIGN WILL BE HELD STRICTLY LIABLE FOR ANY VIOLATION WHETHER WILLFUL OR NEGLECT.



1
-
DETAIL
WEST SUMP TOP OF PRIMARY LINER
SCALE: 1" = 10'



2
-
DETAIL
EAST SUMP TOP OF PRIMARY LINER
SCALE: 1" = 10'

- NOTES:
1. THE SUMP GRADES SHOWN ON THIS DRAWING ARE FOR THE PRIMARY LINER.
 2. A MINIMUM OF 2 FT OF FREEBOARD SHALL BE MAINTAINED IN THE BASINS DURING NORMAL OPERATIONS. THE PIPE PENETRATION FOR THE SECONDARY RISER SHALL BE PLACED AT OR ABOVE THE 2 FT FREEBOARD LINE.

Geosyntec
consultants
1255 ROBERTS BOULEVARD, N.W., SUITE 200
KENNESAW, GEORGIA 30144 USA
PHONE: 678.202.9500

NO.	DESCRIPTION	DATE	SEAL	DRAWN	CHK'D	APP'VD
0	ISSUED FOR CONSTRUCTION	SEPT 2011	JHS	RK	JFB	
DRAWN BY	JHS	DATE	SEPT 2011	SEAL		
CHECKED BY	JAS/RK	DATE	SEPT 2011			
APPROVED BY	JFB	DATE	SEPT 2011			
PROJECT MGR.	JFB	DATE	SEPT 2011			

PARSONS
COMMERCIAL TECHNOLOGY GROUP

OFFICE
301 PLAINFIELD ROAD
SYRACUSE, NY 13212
(315) 451-9560

JOB
444853

WBS

PROJECT TITLE
Honeywell
ONONDAGA LAKE SEDIMENT
MANAGEMENT DESIGN
CAMILLUS, NEW YORK

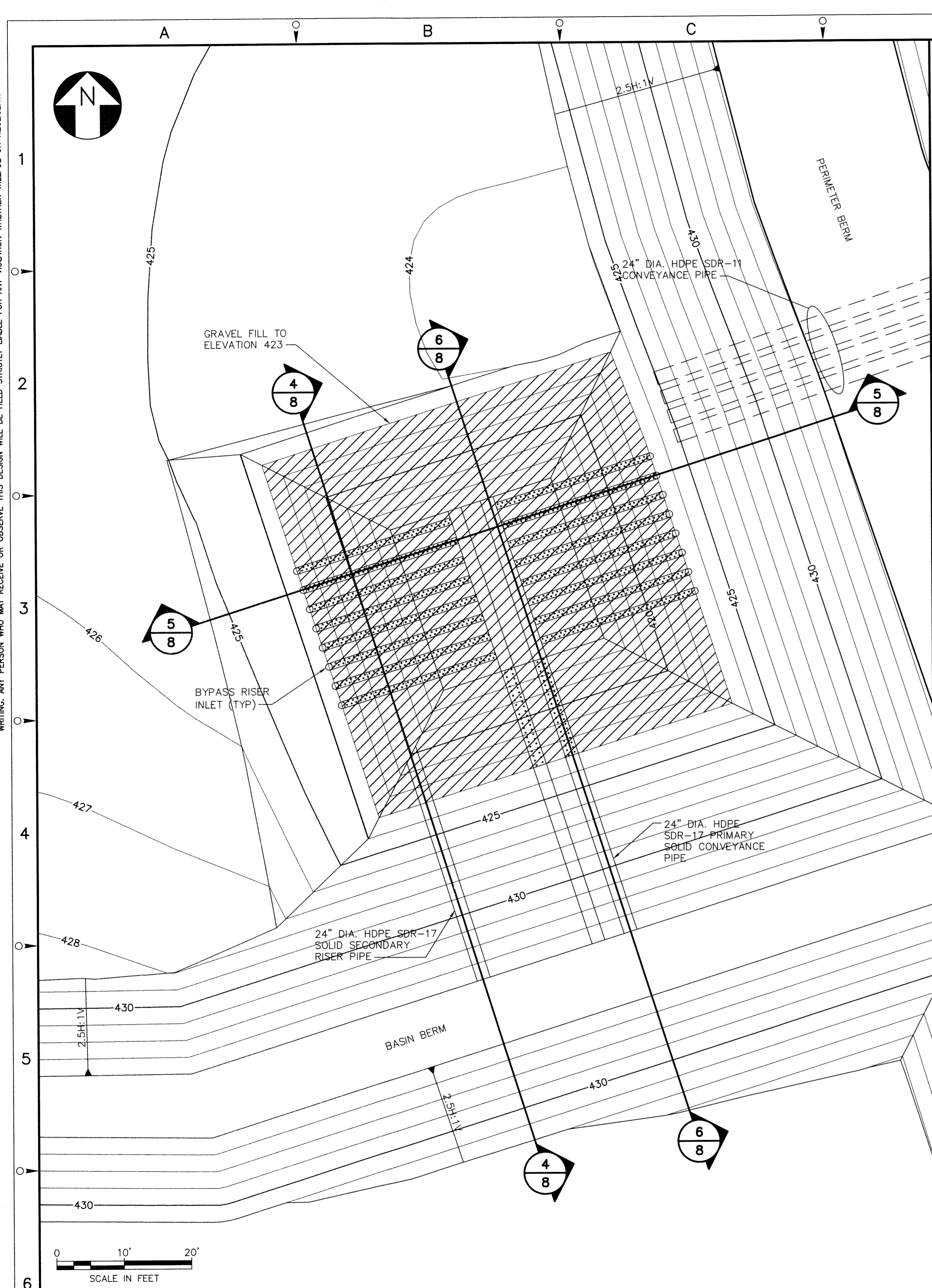
DRAWING TITLE
TOP OF PRIMARY
LINER PLAN FOR SUMPS

SCALE
SCALE: 1" = 20'
(IF PRINTED ON 22x34 SHEET)

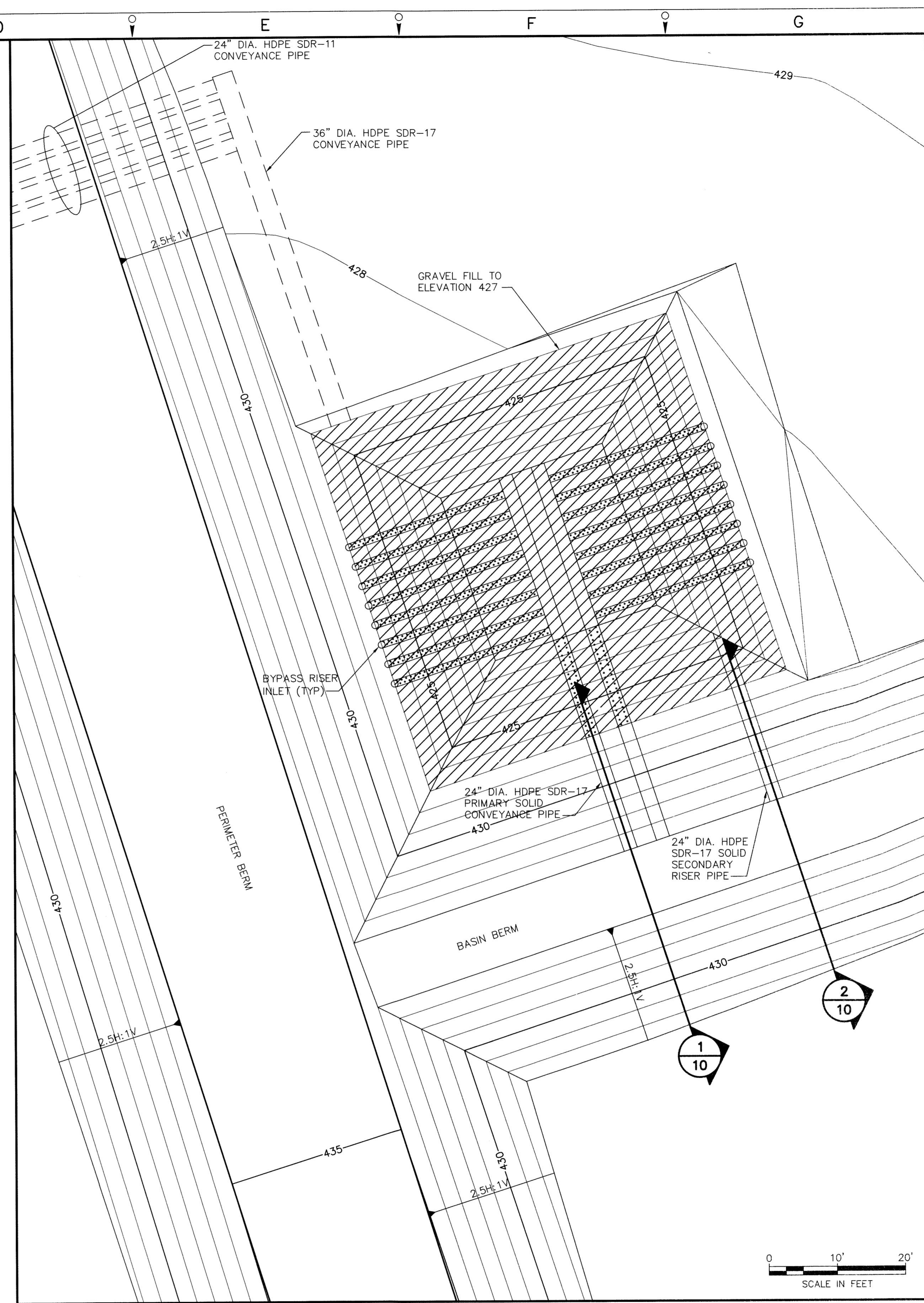
DRAWING NO.
444853-201-C-006

REV.
0

NOTICE: THIS DRAWING IS THE PROPERTY OF HONEYWELL. IT IS FURNISHED SUBJECT TO RETURN ON DEMAND AND THE CONDITION THAT THE INFORMATION AND TECHNICAL SUPPORT THEREON SHALL BE USED ONLY FOR THE PROJECT AND SITE SPECIFICALLY AUTHORIZED IN WRITING. ANY PERSON WHO MAY RECEIVE OR OBSERVE THIS DESIGN WILL BE HELD STRICTLY LIABLE FOR ANY VIOLATION WHETHER WILLFUL OR NEGLIGENT.



1
-
DETAIL
WEST SUMP TOP OF GRAVEL LAYER
SCALE: 1" = 10'



2
-
DETAIL
EAST SUMP TOP OF GRAVEL LAYER
SCALE: 1" = 10'

NOTE:
1. THE SUMP GRADES SHOWN ON THIS DRAWING ARE FOR THE PRIMARY LINER. GRAVEL FILL IS SHOWN TO BE BELOW THE OUTLET OF THE LIQUID CONVEYANCE CULVERT PIPES.

Geosyntec

consultants

1255 ROBERTS BOULEVARD, N.W., SUITE 200
KENNESAW, GEORGIA 30144 USA
PHONE: 678.202.9500

NO.	DESCRIPTION	DATE	DRAWN	CHECK'D	APP'D
0	ISSUED FOR CONSTRUCTION	SEPT 2011	JHS	RK	JFB
DRAWN BY	JHS	DATE	SEPT 2011	SEAL	
CHECKED BY	JAS/RK	DATE	SEPT 2011		
APPROVED BY	JFB	DATE	SEPT 2011		
PROJECT MGR.	JFB	DATE	SEPT 2011		



PARSONS
COMMERCIAL TECHNOLOGY GROUP

OFFICE
301 PLAINFIELD ROAD
SYRACUSE, NY 13212
(315) 451-9560

JOB
444853
WBS

PROJECT TITLE
Honeywell
ONONDAGA LAKE SEDIMENT
MANAGEMENT DESIGN
CAMILLUS, NEW YORK

DRAWING TITLE
GRAVEL FILL PLAN
FOR SUMPS

SCALE
SCALE: 1" = 20'
(IF PRINTED ON 22x34 SHEET)

DRAWING NO.
444853-201-C-007

REV.
0

DETAIL 1
8 BASE AND SIDESLOPE LINER SYSTEM
SCALE: 1" = 1'
XREF: 4296X010

DETAIL 2
8 SUMP SIDESLOPE LINER SYSTEM
SCALE: 1" = 1'
XREF: 4296X010

DETAIL 3
8 SUMP BASE LINER SYSTEM
SCALE: 1" = 1'
XREF: 4296X010

DETAIL 4
7 SECONDARY RISER PIPE
SCALE: 1" = 5'
XREF: 4296X010

DETAIL 5
7 PERFORATED LATERAL COLLECTION PIPES
SCALE: 1" = 5'
XREF: 4296X010

DETAIL 6
7 PRIMARY SOLID RISER PIPE
SCALE: 1" = 5'
XREF: 4296X010

NOTES:

- A GEOTEXTILE CUSHION WITH A MINIMUM DENSITY OF 24oz/yd² SHALL BE PROVIDED OVER AND UNDER THE PRIMARY GEOMEMBRANE LINER IN THE SUMP AREAS WHERE GRAVEL IS PRESENT. THIS GEOTEXTILE CUSHION SHALL BE SECURED BY ANCHORING IN THE ANCHOR TRENCHES AT TWO EDGES AND BY EXTENDING OVER THE SUMP EDGES AND PLACING SAND BAGS.
- THE SUBGRADE SHALL BE CLEARED OF VEGETATION AND GRADED TO BE SMOOTH AND UNIFORM.

Geosyntec consultants
1255 ROBERTS BOULEVARD, N.W., SUITE 200
KENNESAW, GEORGIA 30144 USA
PHONE: 678.202.9500

NO.	DESCRIPTION	DATE	DRAWN	CHECKED	APPROVED
0	ISSUED FOR CONSTRUCTION	SEPT 2011	JHS	RK	JFB

PARSONS COMMERCIAL TECHNOLOGY GROUP

OFFICE: 301 PLAINFIELD ROAD
SYRACUSE, NY 13212
(315) 451-9560

JOB: 444853
WBS:

PROJECT TITLE:
Honeywell
ONONDAGA LAKE SEDIMENT
MANAGEMENT DESIGN
CAMILLUS, NEW YORK

DRAWING TITLE:
DETAILS I


SCALE: AS SHOWN
(IF PRINTED ON 22x34 SHEET)

DRAWING NO.: **444853-201-C-008**

REV. 0

NOTES:

1. A GEOTEXTILE CUSHION WITH A MINIMUM DENSITY OF 24oz/yd² SHALL BE PROVIDED OVER AND UNDER THE PRIMARY GEOMEMBRANE LINER IN THE SUMP AREAS WHERE GRAVEL IS PRESENT. THIS GEOTEXTILE CUSHION SHALL BE SECURED BY ANCHORING IN THE ANCHOR TRENCHES AT TWO EDGES AND BY EXTENDING OVER THE SUMP EDGES AND PLACING SAND BAGS.
2. THE SUBGRADE SHALL BE CLEARED OF VEGETATION AND GRADED TO BE SMOOTH AND UNIFORM.

Geosyntec 
consultants
1255 ROBERTS BOULEVARD, N.W., SUITE
KENNESAW, GEORGIA 30144 USA
PHONE: 678.202.9500

[illegible]

PARSONS
COMMERCIAL TECHNOLOGY GROUP

OFFICE	JOB
301 PLAINFIELD ROAD SYRACUSE, NY 13212 (315) 451-9560	444853
	WBS

PROJECT TITLE

Honeywell

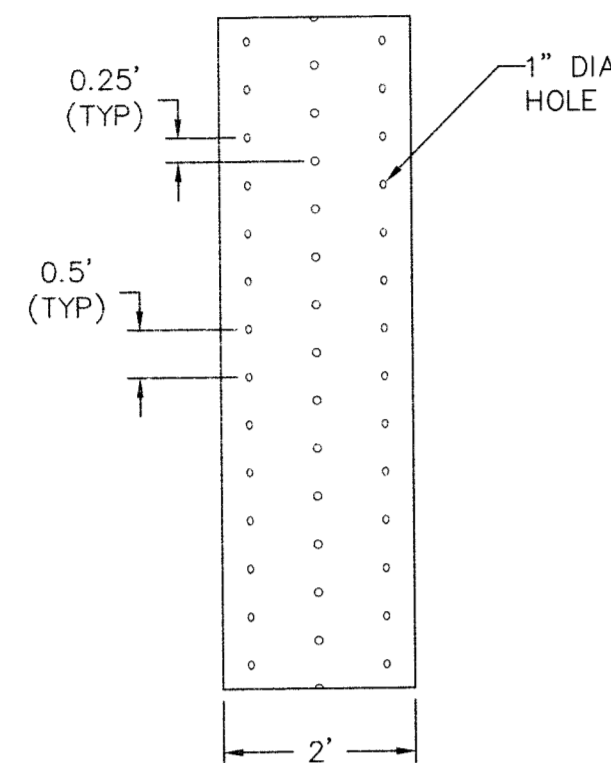
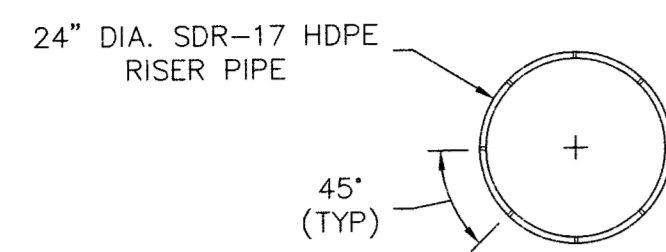
ONONDAGA LAKE SEDIMENT
MANAGEMENT DESIGN
CAMILLUS, NEW YORK

DRAWING TITLE

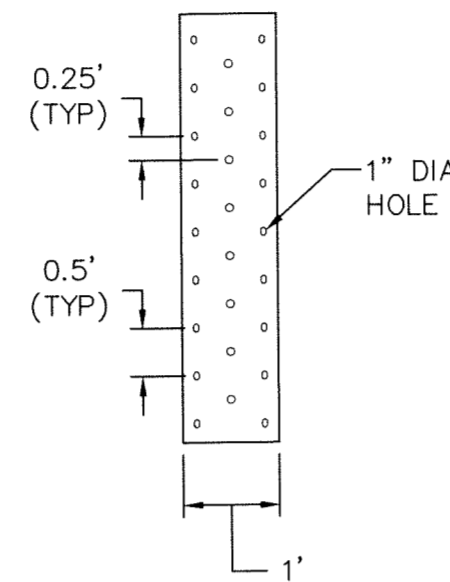
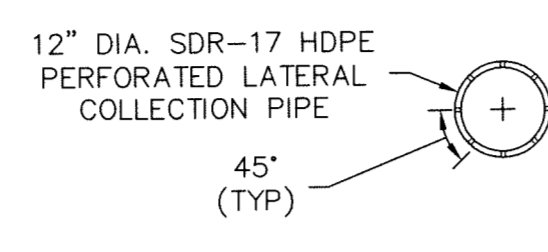
DETAILS 1

SCALE: AS SHOWN (IF PRINTED ON 22x34 SHEET)	
DRAWING NO. 444853-201-C-008	REV. 0

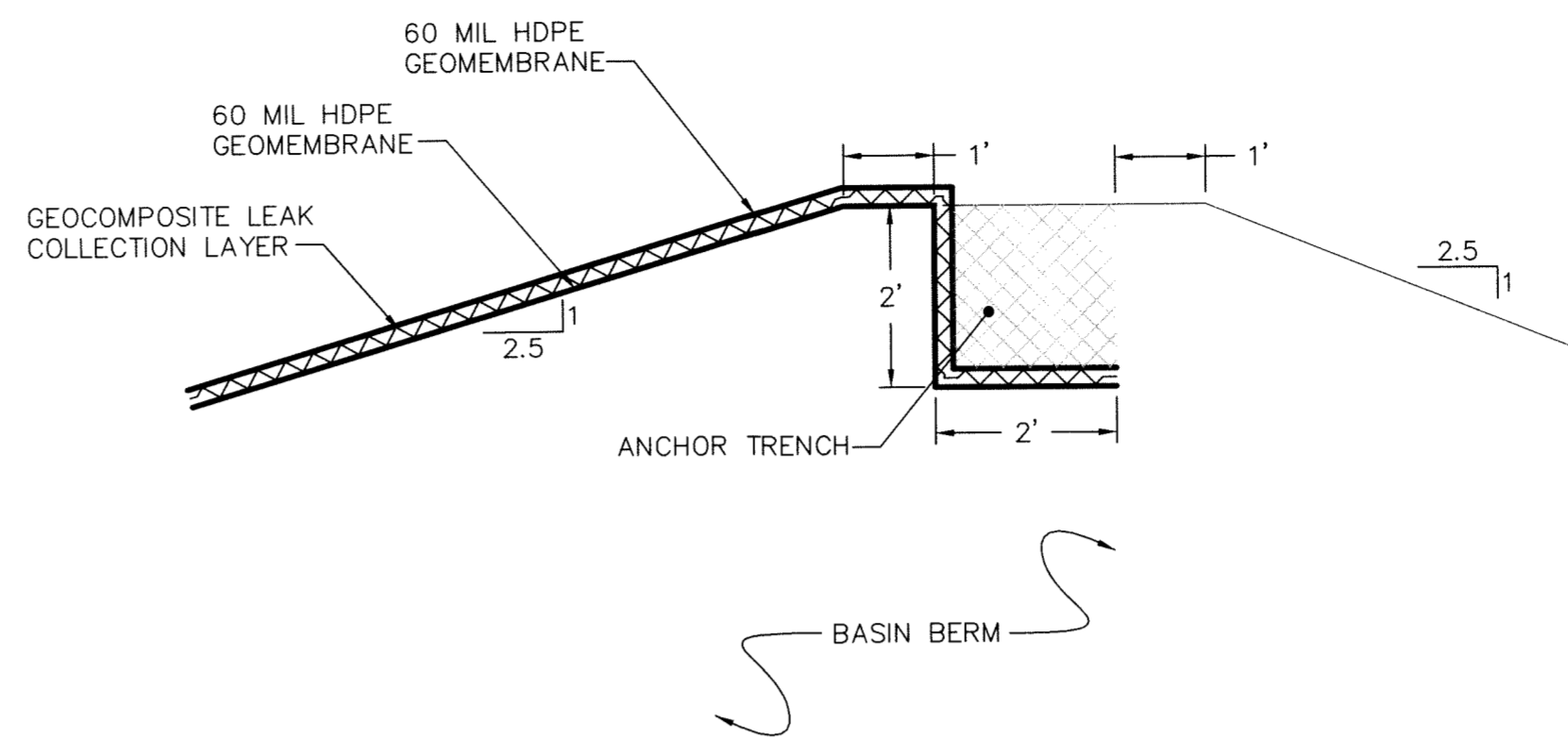
NOTICE: THE PROPERTY OF HONEYWELL IS FURNISHED SUBJECT TO RETURN ON DEMAND AND THE CONDITION THAT THE INFORMATION AND TECHNOLOGY EMBODIED IN THIS DRAWING, DESIGN, OR SPECIFICATION IS NOT TO BE REPRODUCED OR COPIED IN WHOLE OR IN PART EXCEPT AS PREVIOUSLY AUTHORIZED IN WRITING. ANY PERSON WHO MAY RECEIVE OR OBSERVE THIS DESIGN WILL BE HELD STRICTLY LIABLE FOR ANY VIOLATION WHETHER WILLFUL OR NEGLIGENT.



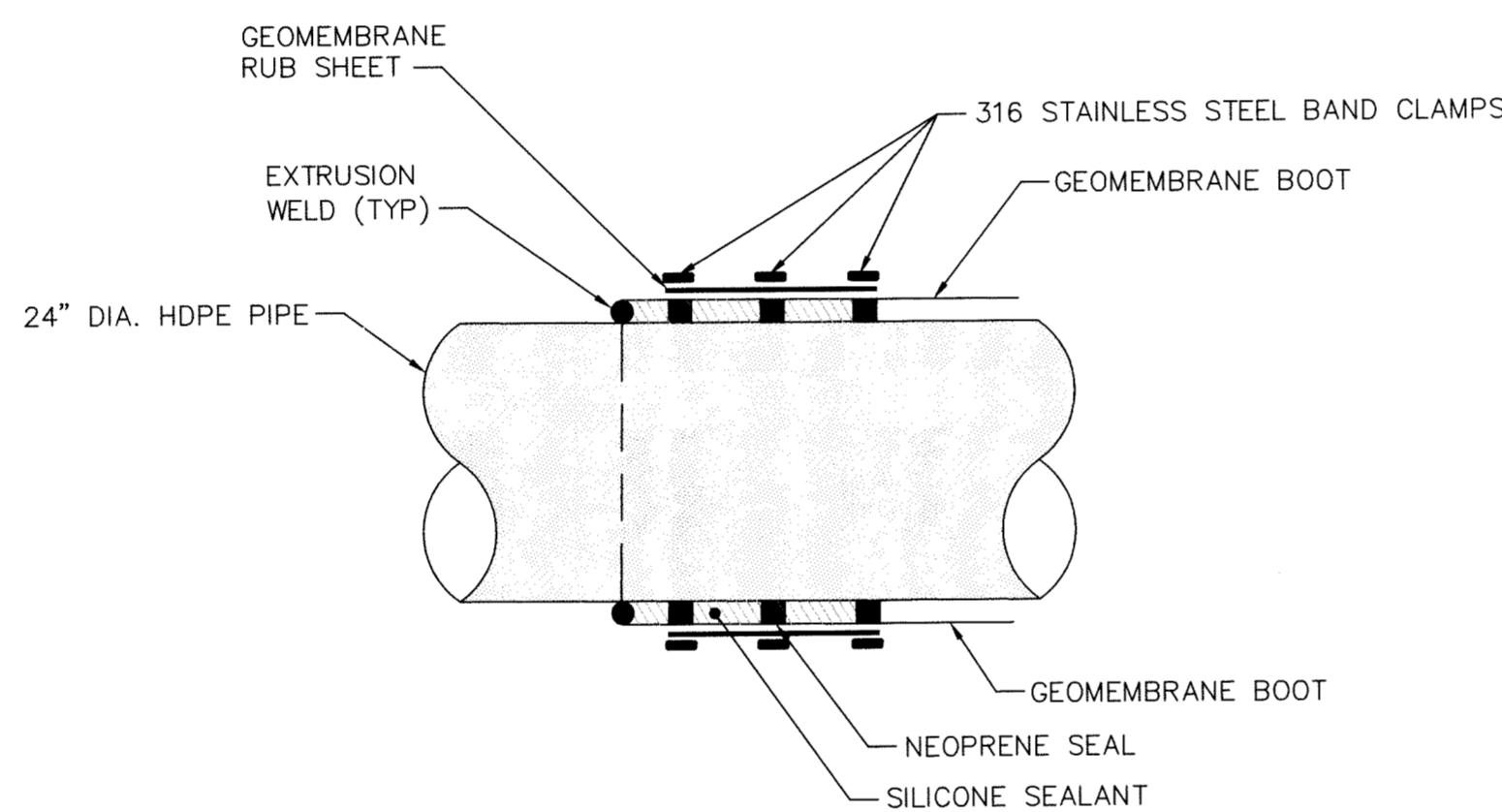
1
8
DETAIL
24" DIA. PERFORATED HDPE RISER PIPE
SCALE: 1" = 2'
XREF: 4299X010



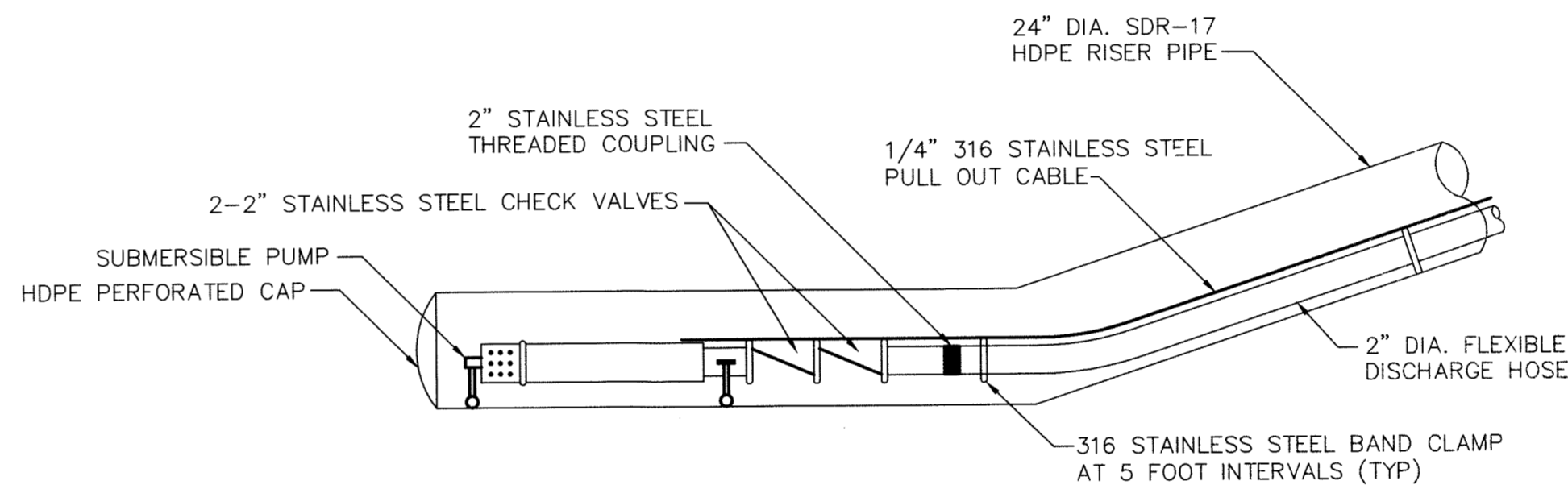
2
8
DETAIL
12" DIA. PERFORATED
LATERAL COLLECTION PIPE
SCALE: 1" = 2'
XREF: 4299X010



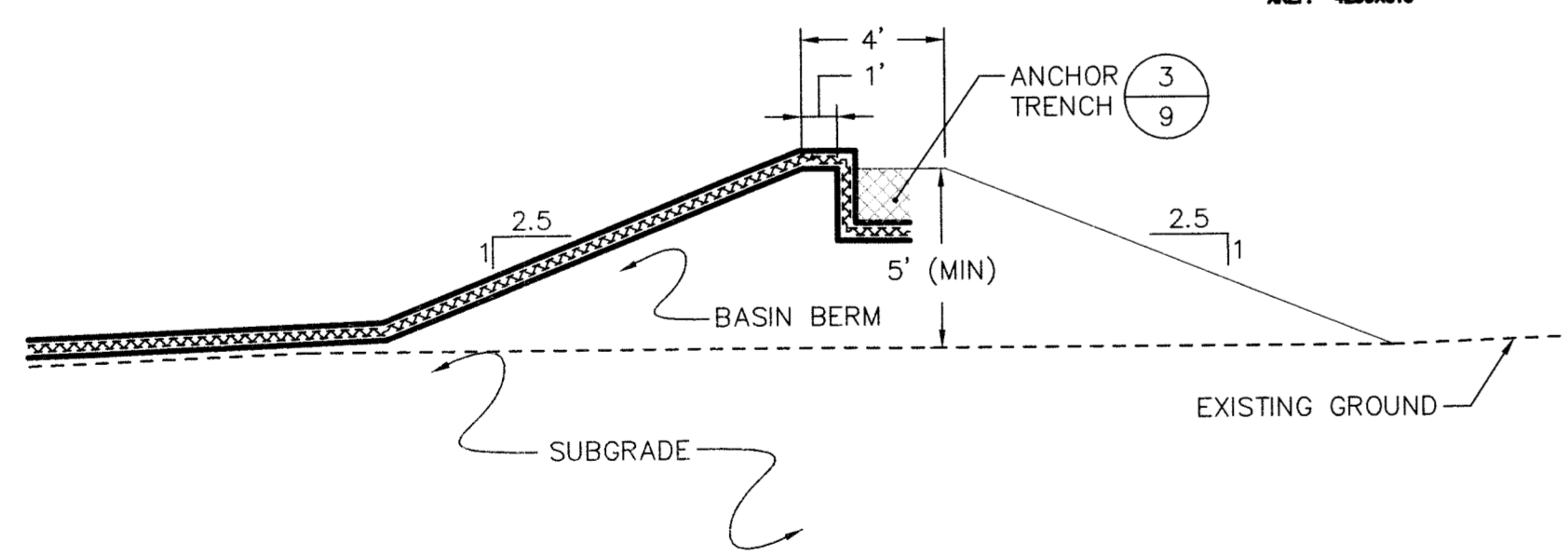
3
8
DETAIL
ANCHOR TRENCH
SCALE: 1" = 2'
XREF: 4299X010



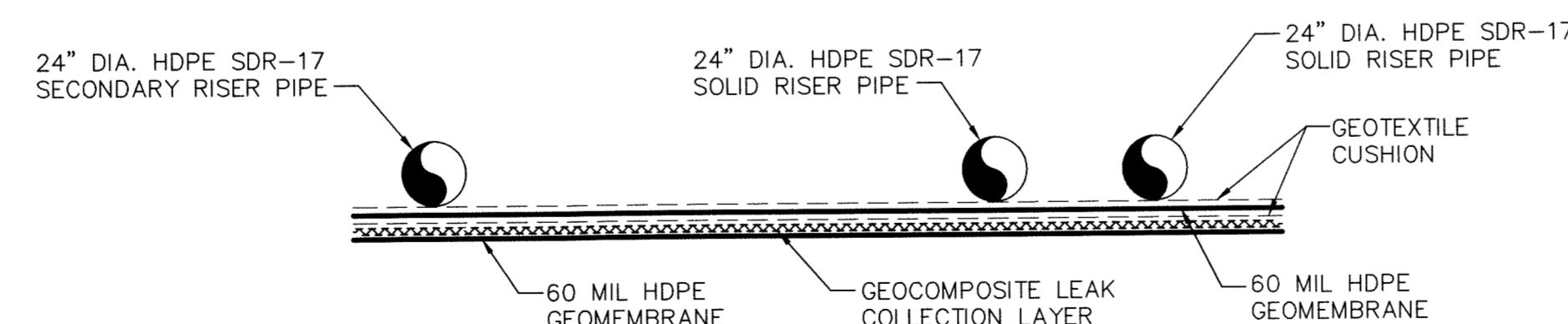
4
6
DETAIL
TYPICAL GEOMEMBRANE BOOT AT PIPE PENETRATION
SCALE: 1" = 2'
XREF: 4299X010



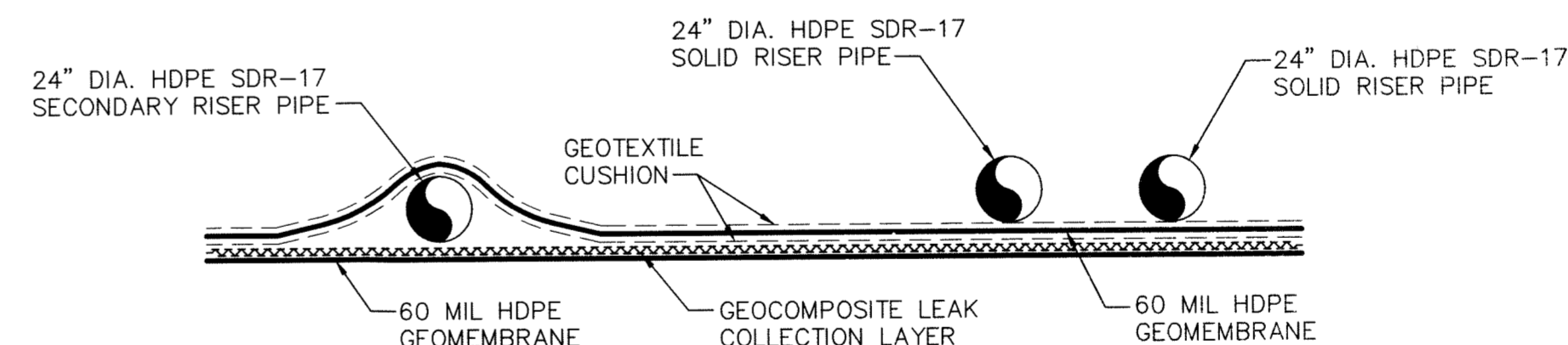
5
8
DETAIL
SUBMERSIBLE PUMP FOR LEAKAGE REMOVAL
SCALE: 1" = 2'
XREF: 4299X010



6
4
DETAIL
BASIN BERM
SCALE: 1" = 5'
XREF: 4299X010



8
6
DETAIL
SIDESLOPE RISER SYSTEM -
ABOVE THE GEOMEMBRANE BOOT
SCALE: 1" = 5'
XREF: 4299X010



7
6
DETAIL
SIDESLOPE RISER SYSTEM -
BELOW THE GEOMEMBRANE BOOT
SCALE: 1" = 5'
XREF: 4299X010

Geosyntec
consultants
1255 ROBERTS BOULEVARD, N.W., SUITE 200
KENNESAW, GEORGIA 30144 USA
PHONE: 678.202.9500

NO.	DESCRIPTION	DATE	SEAL	DATE	DATE	DATE	DATE	DATE	DATE
0	ISSUED FOR CONSTRUCTION	SEPT 2011	JHS	RK	JFB				
1									
2									
3									
4									
5									
6									
7									
8									
9									
10									
11									
12									
13									
14									
15									
16									
17									
18									
19									
20									
21									
22									
23									
24									
25									
26									
27									
28									
29									
30									
31									
32									
33									
34									
35									
36									
37									
38									
39									
40									
41									
42									
43									
44									
45									
46									
47									
48									
49									
50									
51									
52									
53									
54									
55									
56									
57									
58									
59									
60									
61									
62									
63									
64									
65									
66									
67									
68									
69									
70									
71									
72									
73									
74									
75									
76									
77									
78									
79									
80									
81									
82									
83									
84									
85									
86									
87									
88									
89									
90									
91									
92									
93									
94									
95									
96									
97									
98									
99									
100									

PARSONS
COMMERCIAL TECHNOLOGY GROUP

OFFICE
301 PLAINFIELD ROAD
SYRACUSE, NY 13212
(315) 451-9560

PROJECT TITLE
Honeywell
ONONDAGA LAKE SEDIMENT
MANAGEMENT DESIGN
CAMILLUS, NEW YORK

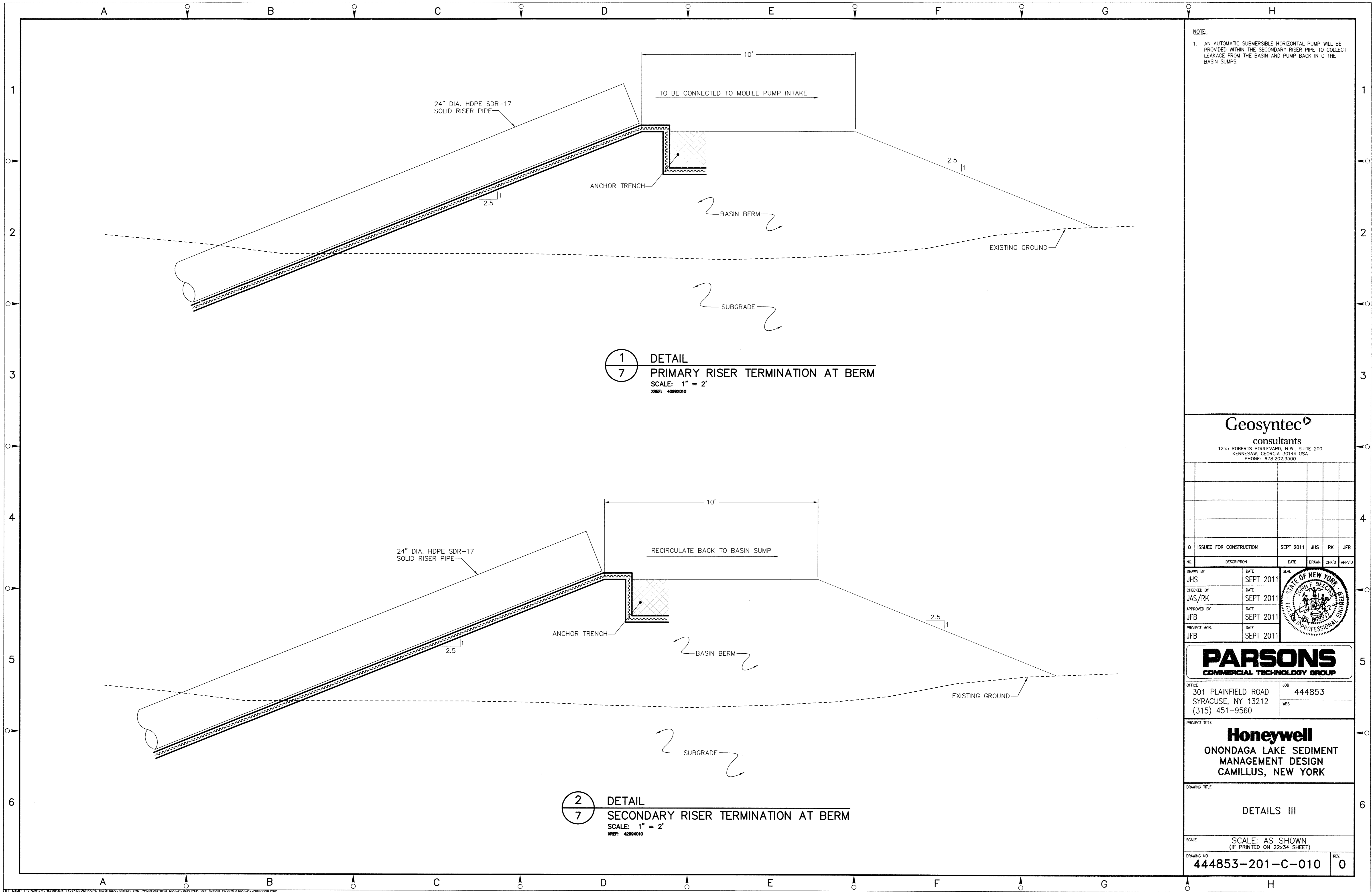
DRAWING TITLE
DETAILS II

SCALE
SCALE: AS SHOWN
(IF PRINTED ON 22x34 SHEET)

DRAWING NO.
444853-201-C-009

REV.
0

NOTICE: THE PROPERTY OF HONEYWELL IS FURNISHED SUBJECT TO RETURN ON DEMAND AND THE CONDITION THAT THE INFORMATION AND TECHNOLOGY EMBODIED IN THIS DRAWING, THE DESIGN, CONSTRUCTION, AND OPERATION OF ANY FACILITY OR SYSTEM, OR ANY INFORMATION CONTAINED HEREIN, IS NOT TO BE REPRODUCED, COPIED, OR TRANSMITTED IN ANY FORM OR BY ANY MEANS, ELECTRONIC OR MECHANICAL, INCLUDING PHOTOCOPYING, RECORDING, OR BY ANY INFORMATION STORAGE AND RETRIEVAL SYSTEM, WITHOUT THE WRITTEN PERMISSION OF HONEYWELL. ANY PERSON WHO MAY RECEIVE OR OBSERVE THIS DESIGN WILL BE HELD STRICTLY LIABLE FOR ANY VIOLATION WHETHER WILLFUL OR NEGLIGENT.



Geosyntec[®]
consultants

1255 ROBERTS BOULEVARD, N.W., SUITE 200
KENNESAW, GEORGIA 30144 USA
PHONE: 678.222.9500

0	ISSUED FOR CONSTRUCTION	SEPT 2011	JHS	RK	JFB				
NO.	DESCRIPTION	DATE	DATE	DATE	DATE	DATE	DATE	DATE	DATE
DRAWN BY	JHS	SEPT 2011	SEAL						
CHECKED BY	JAS/RK	SEPT 2011							
APPROVED BY	JFB	SEPT 2011							
PROJECT MGR.	JFB	SEPT 2011							

PARSONS
COMMERCIAL TECHNOLOGY GROUP

OFFICE: 301 PLAINFIELD ROAD
SYRACUSE, NY 13212
(315) 451-9560

JOB: 444853
WBS:

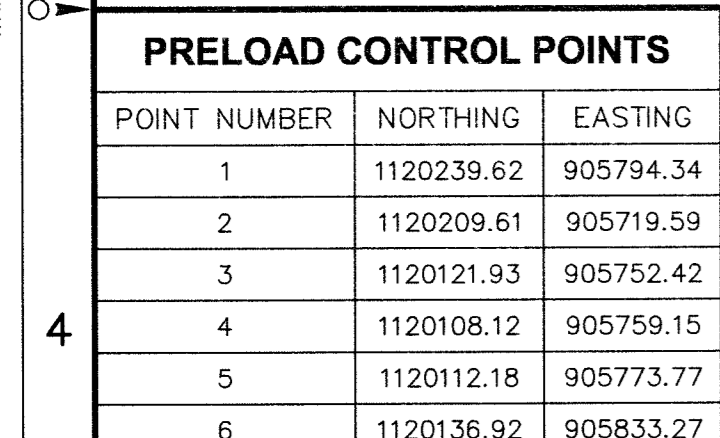
PROJECT TITLE:
Honeywell
ONONDAGA LAKE SEDIMENT
MANAGEMENT DESIGN
CAMILLUS, NEW YORK

DRAWING TITLE:
DETAILS III

SCALE: SCALE: AS SHOWN
(IF PRINTED ON 22x34 SHEET)

DRAWING NO.: 444853-201-C-010
REV: 0

NOTICE:



1 PLAN
— WEST LIQUID CONVEYANCE CULVERT
SCALE: 1"=20'



- NOTES:**
1. THE SUMP GRADES SHOWN ON THIS DRAWING ARE FOR THE PRIMARY LINER.
 2. THE WEST LIQUID CONVEYANCE CULVERT PIPES WERE DESIGNED TO HAVE A MINIMUM SLOPE OF 1% DUE TO CONSIDERATIONS OF SETTLEMENTS, IT IS SPECIFIED THAT THE 24" DIAMETER PIPES ARE INSTALLED AT A MINIMUM SLOPE OF 3.8%. THE TARGET INLET AND OUTLET ELEVATIONS WILL BE PROVIDED AFTER THE PROPOSED PRELOADING OF THE BASIN SUMP AREA IS COMPLETED AND THE DESIGN DRAINAGE DRAWINGS ARE UPDATED IN ACCORDANCE WITH THE POST SETTLEMENT GRADES REACHED AFTER PRELOAD IS REMOVED.
 3. THE DETAILS OF THE SCA LINER SYSTEM ARE PRESENTED ON DRAWING 444683-101-C-009 OF THE SCA FINAL DESIGN DRAWINGS.
 4. A PRELOAD CONSISTING OF 5FT OF SOIL SHALL BE PLACED OVER THE BOUNDARY SHOWN ON THIS DRAWING FOR A MINIMUM PERIOD OF THREE MONTHS.

Geosyntec
consultants

1255 ROBERTS BOULEVARD, N.W., SUITE 200
KENNESAW, GEORGIA 30144 USA
PHONE: 678.202.9500

[illegible]

PARSONS
COMMERCIAL TECHNOLOGY GROUP

OFFICE	JOB
301 PLAINFIELD ROAD	444853
SYRACUSE, NY 13212	
(315) 451-9560	WBS

PROJECT TITLE

Honeywell

ONONDAGA LAKE SEDIMENT
MANAGEMENT DESIGN
CAMILLUS, NEW YORK

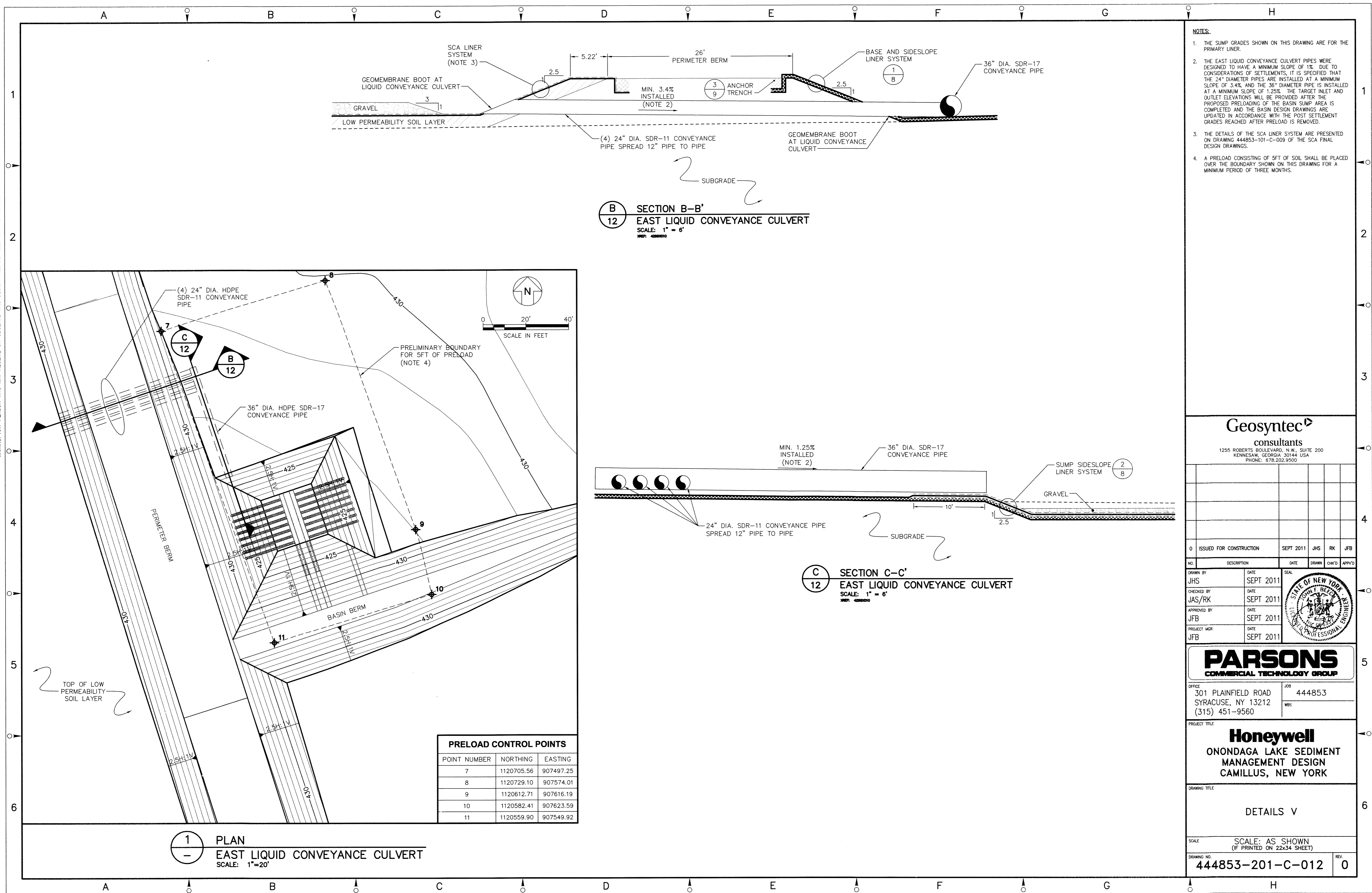
DRAWING TITLE

DETAILS IV

SCALE	SCALE: AS SHOWN (IF PRINTED ON 22x34 SHEET)	
DRAWING NO.		REV.

444853-201-C-011	C
------------------	---

NOTICE: THIS DRAWING, THE PROPERTY OF HONEYWELL, IS FURNISHED SUBJECT TO RETURN ON DEMAND AND THE CONDITION THAT THE INFORMATION AND TECHNOLOGY EMPLOYED HEREIN SHALL NOT BE DISCLOSED OR USED AND THE DRAWING SHALL NOT BE REPRODUCED OR COPIED IN WHOLE OR IN PART EXCEPT AS PREVIOUSLY AUTHORIZED IN WRITING. ANY PERSON WHO MAY RECEIVE OR OBSERVE THIS DESIGN WILL BE HELD STRICTLY LIABLE FOR ANY VIOLATION WHETHER WILLFUL OR NEGLIGENT.



- NOTES:
1. THE SUMP GRADES SHOWN ON THIS DRAWING ARE FOR THE PRIMARY LINER.
 2. THE EAST LIQUID CONVEYANCE CULVERT PIPES WERE DESIGNED TO HAVE A MINIMUM SLOPE OF 1%. DUE TO CONSIDERATIONS OF SETTLEMENTS, IT IS SPECIFIED THAT THE 24" DIAMETER PIPES ARE INSTALLED AT A MINIMUM SLOPE OF 3.4%, AND THE 36" DIAMETER PIPE IS INSTALLED AT A MINIMUM SLOPE OF 1.25%. THE TARGET INLET AND OUTLET ELEVATIONS WILL BE PROVIDED AFTER THE PROPOSED PRELOADING OF THE BASIN SUMP AREA IS COMPLETED AND THE BASIN DESIGN DRAWINGS ARE UPDATED IN ACCORDANCE WITH THE POST SETTLEMENT GRADES REACHED AFTER PRELOAD IS REMOVED.
 3. THE DETAILS OF THE SCA LINER SYSTEM ARE PRESENTED ON DRAWING 444853-101-C-009 OF THE SCA FINAL DESIGN DRAWINGS.
 4. A PRELOAD CONSISTING OF 5FT OF SOIL SHALL BE PLACED OVER THE BOUNDARY SHOWN ON THIS DRAWING FOR A MINIMUM PERIOD OF THREE MONTHS.

Geosyntec
consultants
1255 ROBERTS BOULEVARD, N.W., SUITE 200
KENNESAW, GEORGIA 30144 USA
PHONE: 678.202.9500

NO.	DESCRIPTION	DATE	DRAWN	CHKD	APPR'D
0	ISSUED FOR CONSTRUCTION	SEPT 2011	JHS	RK	JFB
DRAWN BY	JHS	DATE	SEPT 2011	SEAL	
CHECKED BY	JAS/RK	DATE	SEPT 2011		
APPROVED BY	JFB	DATE	SEPT 2011		
PROJECT MGR	JFB	DATE	SEPT 2011		

PARSONS
COMMERCIAL TECHNOLOGY GROUP

OFFICE
301 PLAINFIELD ROAD
SYRACUSE, NY 13212
(315) 451-9560

JOB
444853

WBS

PROJECT TITLE
Honeywell
ONONDAGA LAKE SEDIMENT
MANAGEMENT DESIGN
CAMILLUS, NEW YORK

DRAWING TITLE
DETAILS V

SCALE
SCALE: AS SHOWN
(IF PRINTED ON 22x34 SHEET)

DRAWING NO.
444853-201-C-012

REV.
0