

Figure 4-1. Location of Potential Honeywell Upland Sources to Onondaga Lake

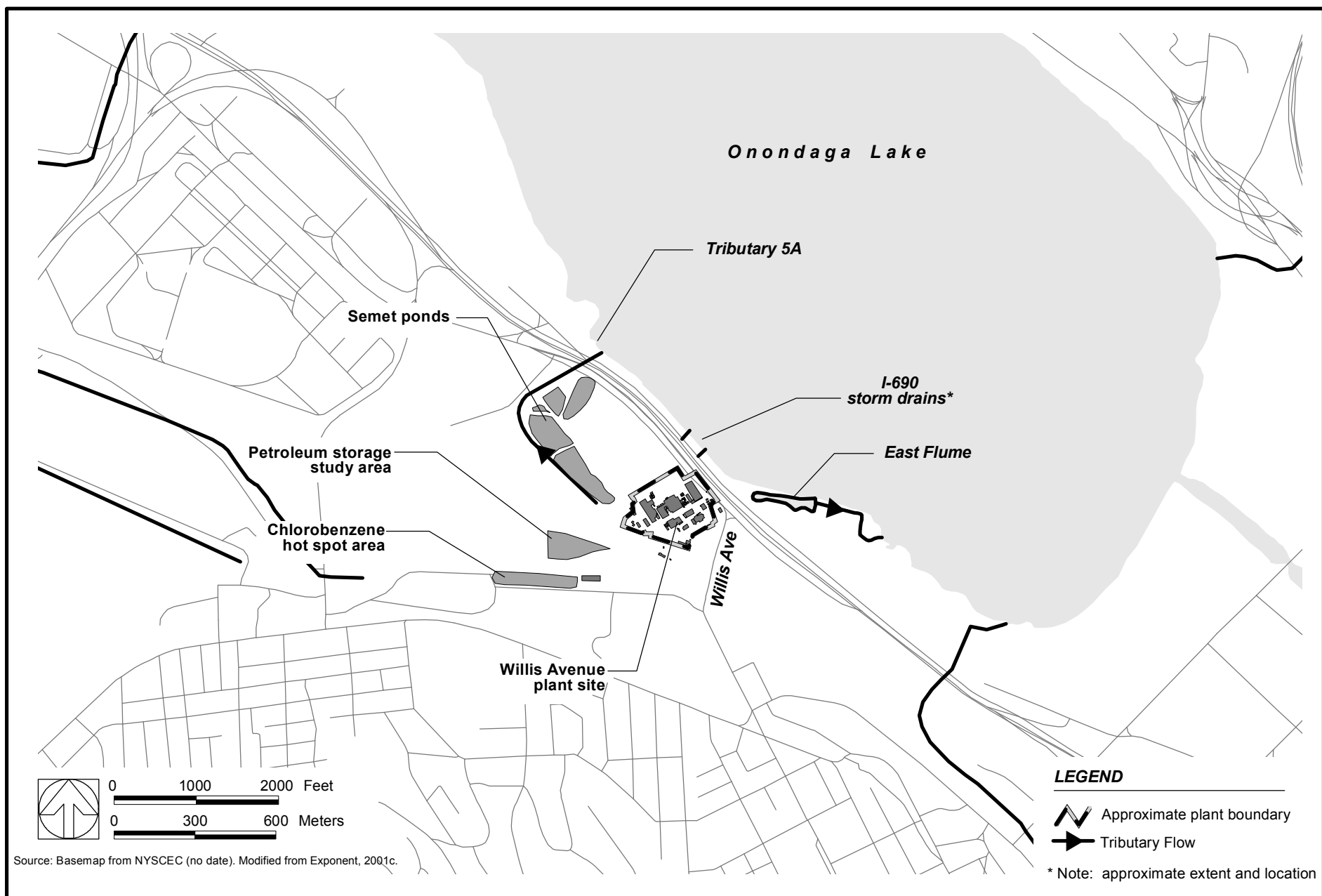


Figure 4-2. Honeywell Lakeshore Areas Near the Willis Avenue Site

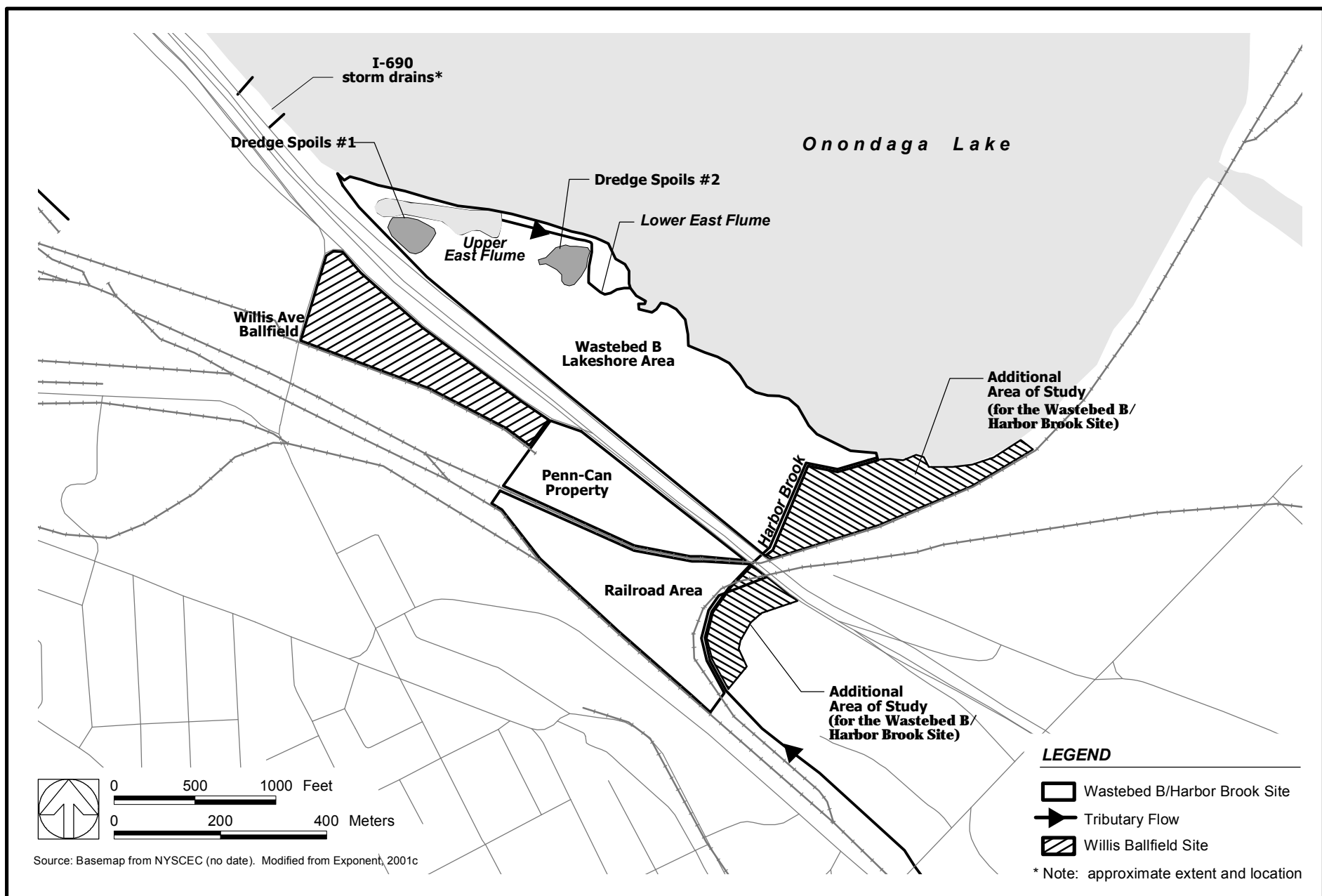


Figure 4-3. Honeywell Lakeshore Areas Near the Wastebed B/Harbor Brook Site

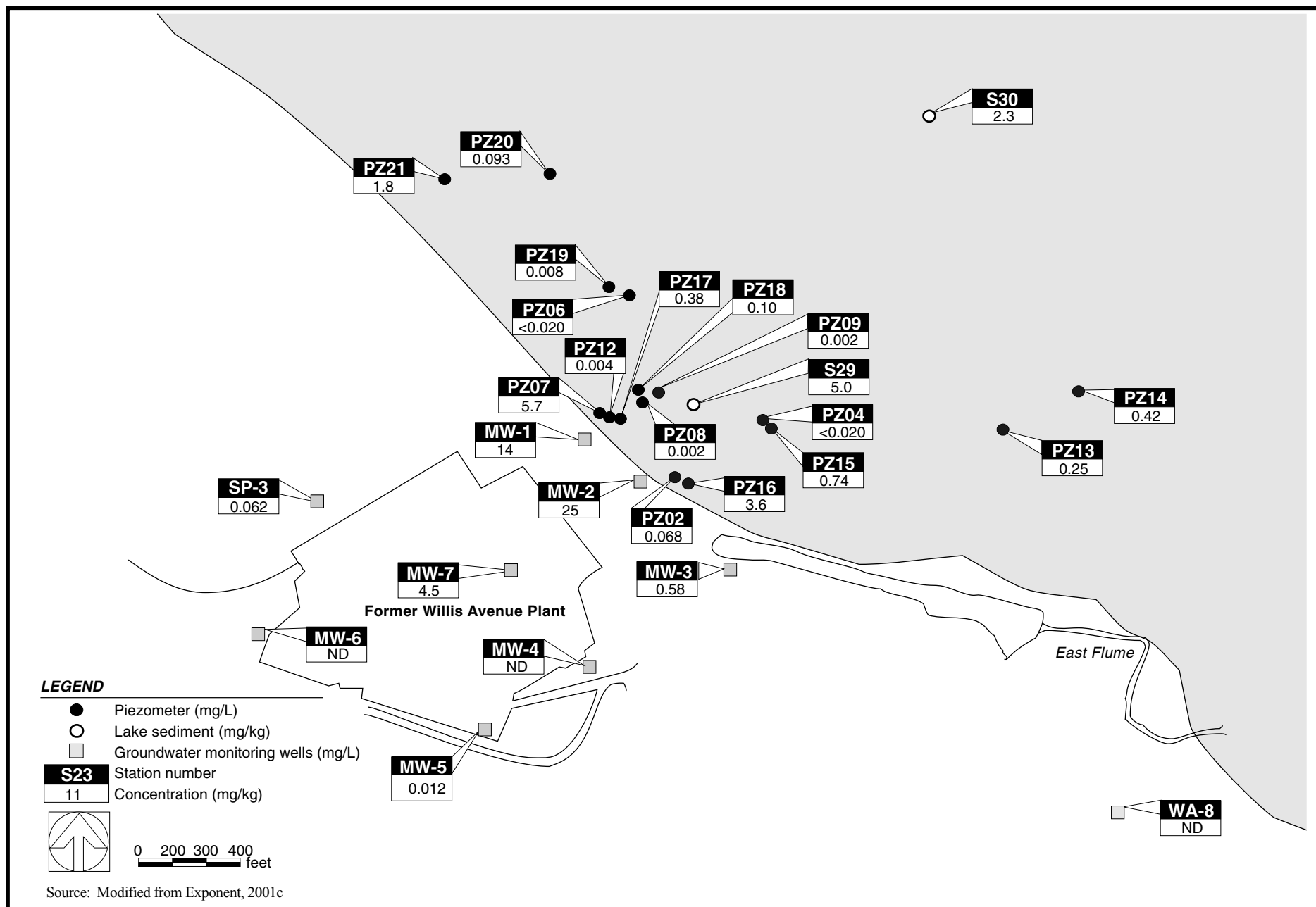


Figure 4-4. Localized Map of the Willis Avenue Plant Area Showing Monochlorobenzene in the Shallow Groundwater, Porewater, and Lake Sediments.

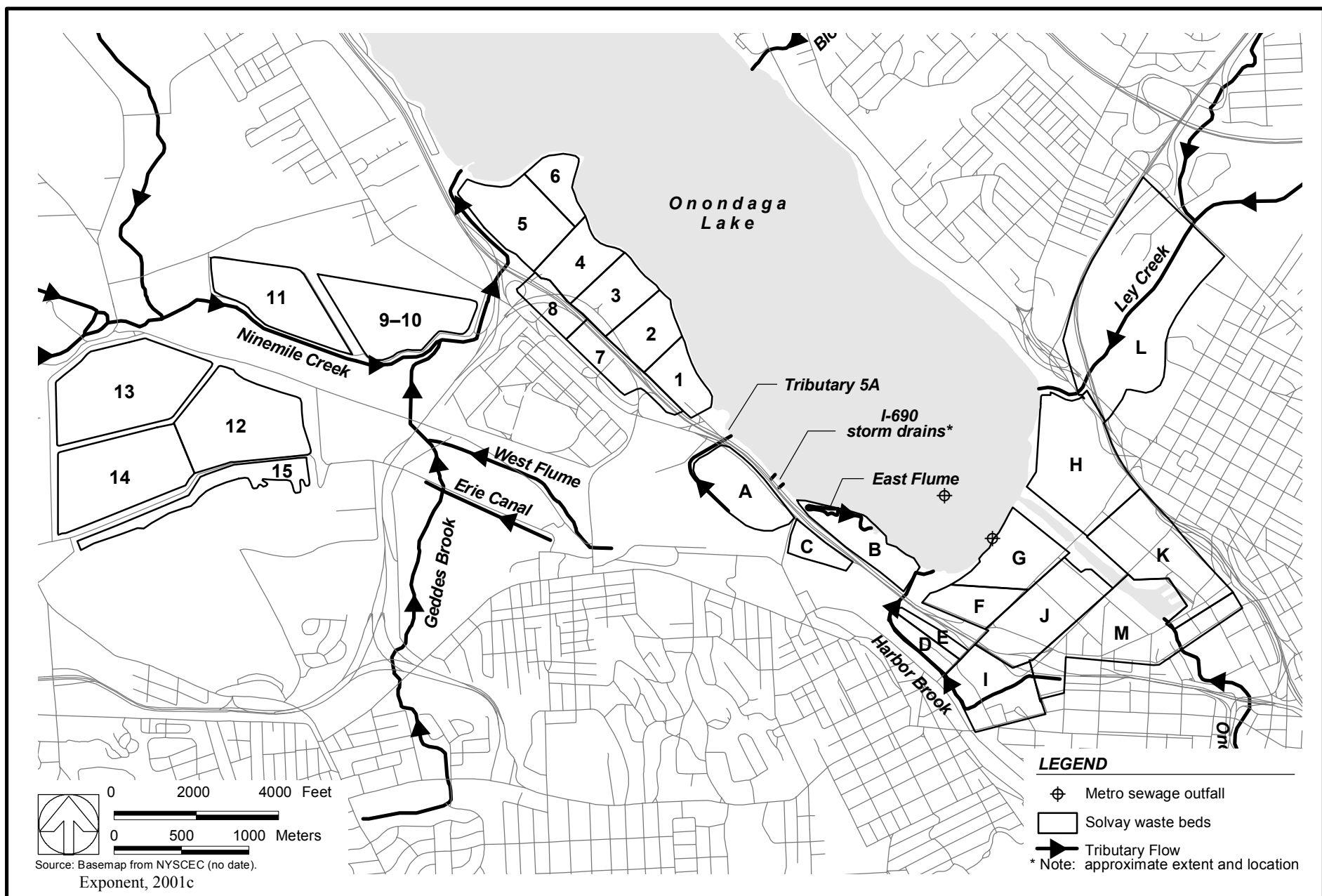


Figure 4-5. Solvay waste beds: contaminant sources and migration pathways

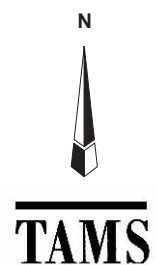
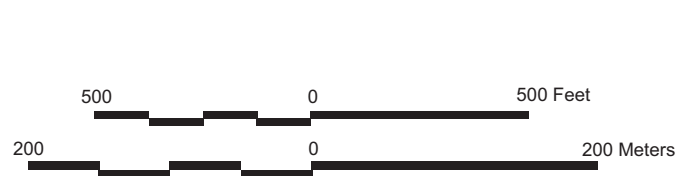
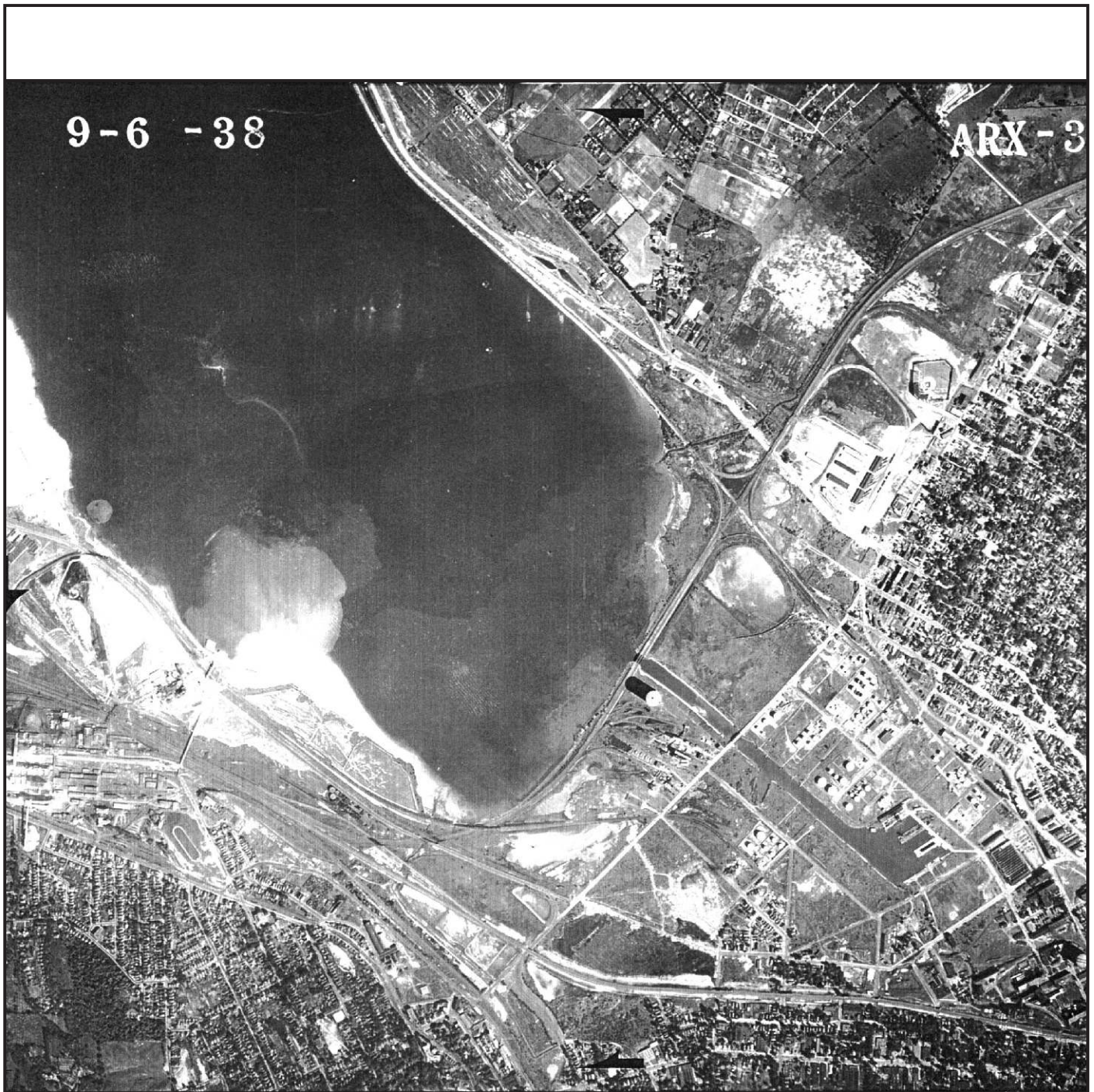


Figure 4-6
Aerial Photograph of Southwestern Area of Onondaga Lake, 1926

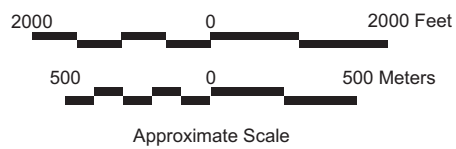


2000 0 2000 Feet
500 0 500 Meters
Approximate Scale



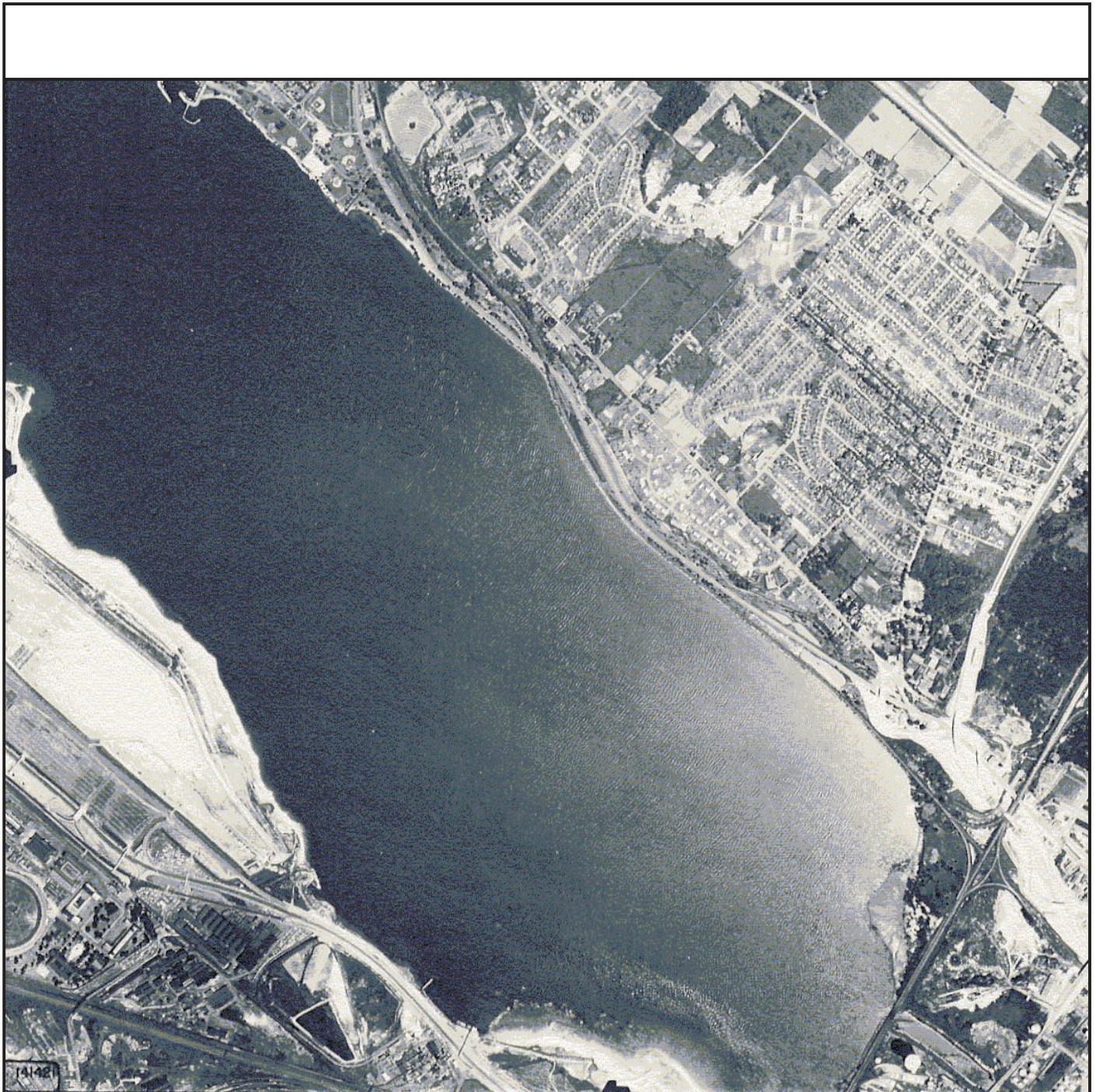
TAMS

Figure 4-7
Aerial Photograph of Southwestern Area of Onondaga Lake, September 1938



TAMS

Figure 4-8
Aerial Photograph of Southwestern Area of Onondaga Lake, October 1951



2000 0 2000 Feet

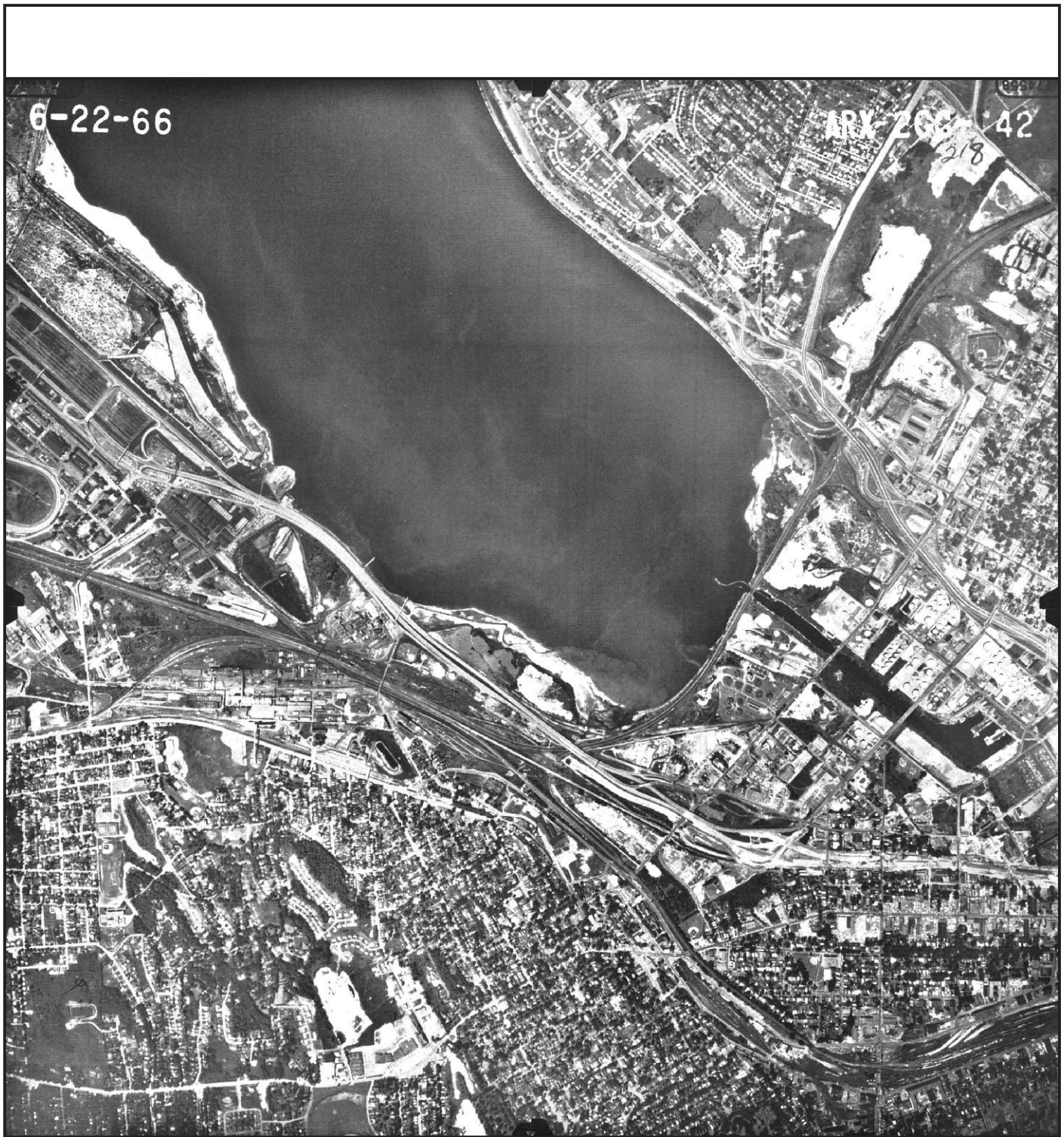
500 0 500 Meters

Approximate Scale



TAMS

Figure 4-9
Aerial Photograph of Southwestern Area of Onondaga Lake, June 1959

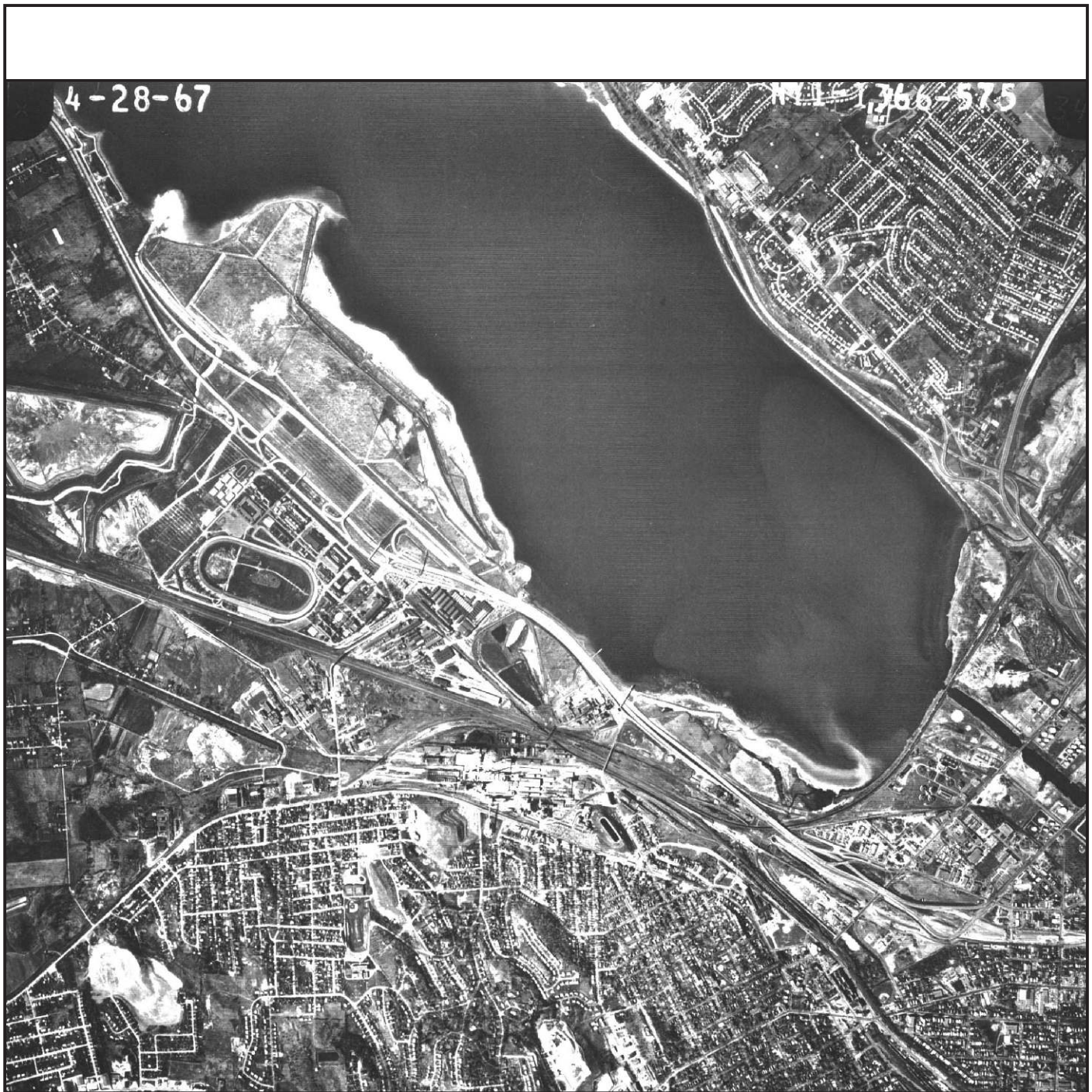


2000 0 2000 Feet
500 0 500 Meters
Approximate Scale



TAMS

Figure 4-10
Aerial Photograph of Southwestern Area of Onondaga Lake, June 1966



2000 0 2000 Feet

500 0 500 Meters

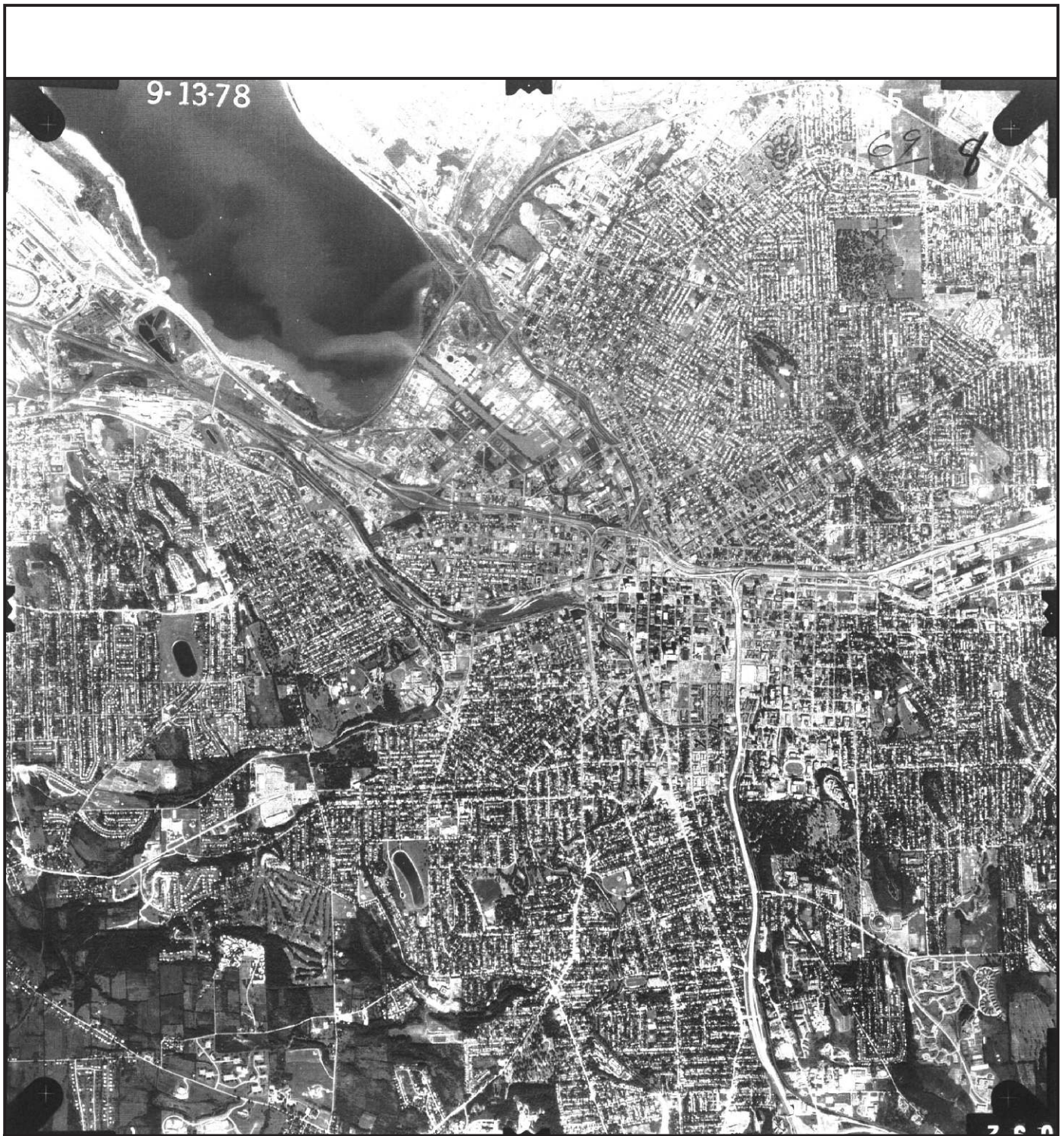
Approximate Scale

N



TAMS

Figure 4-11
Aerial Photograph of Southwestern Area of Onondaga Lake, April 1967



4000 0 4000 Feet
1000 0 1000 Meters
Approximate Scale



TAMS

Figure 4-12

Aerial Photograph of Southwestern Area of Onondaga Lake, September 1978

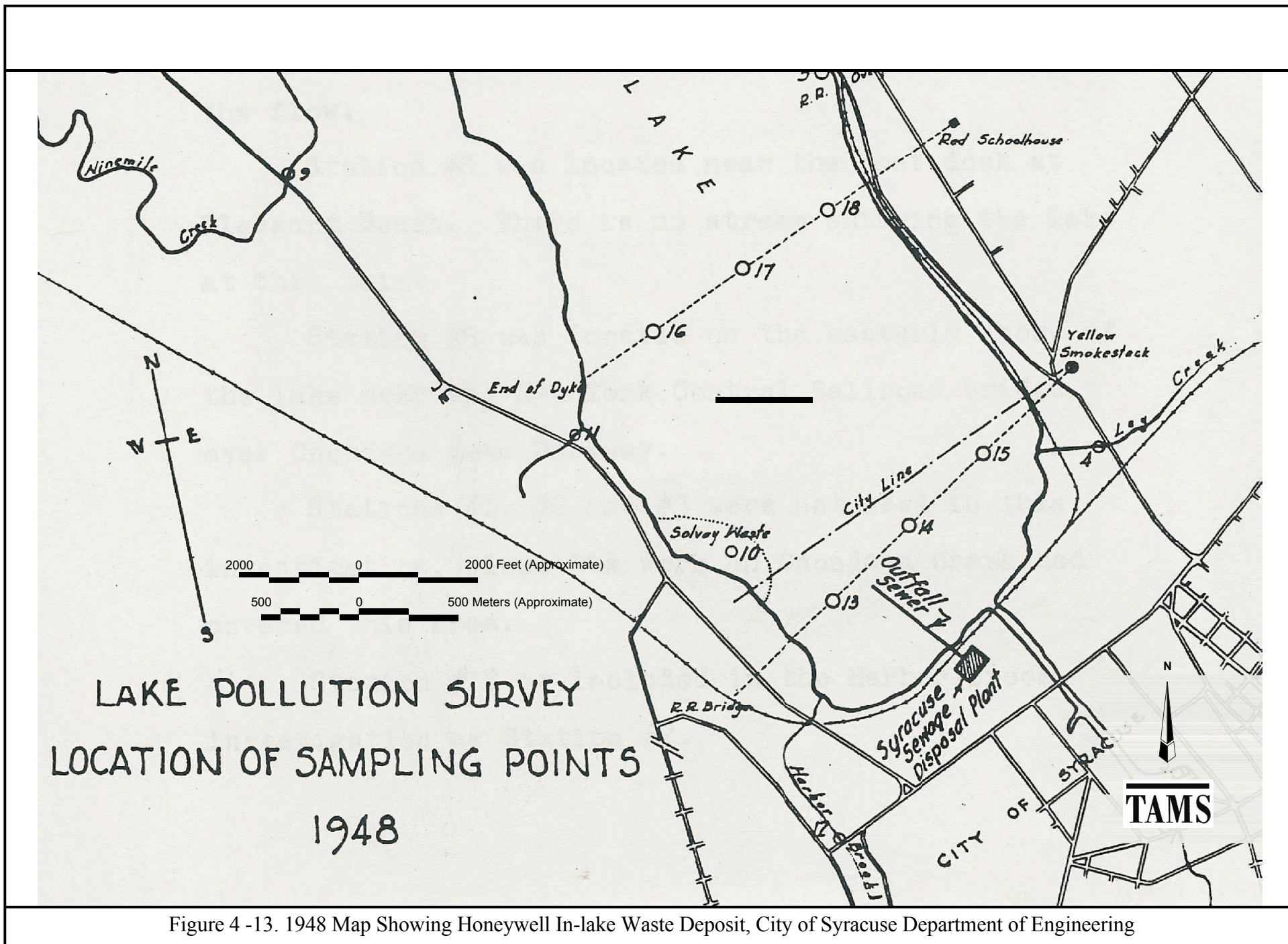


Figure 4 -13. 1948 Map Showing Honeywell In-lake Waste Deposit, City of Syracuse Department of Engineering

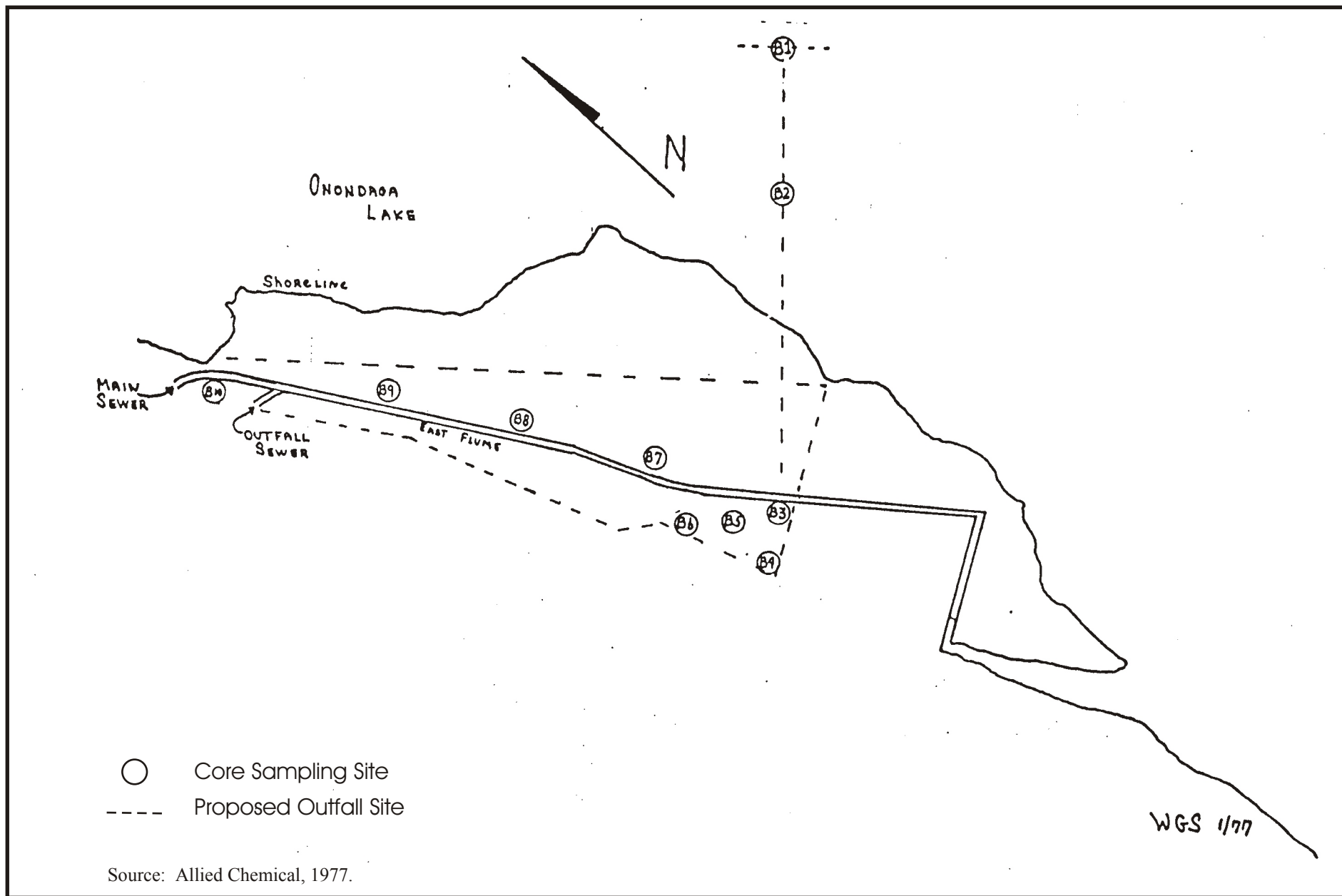
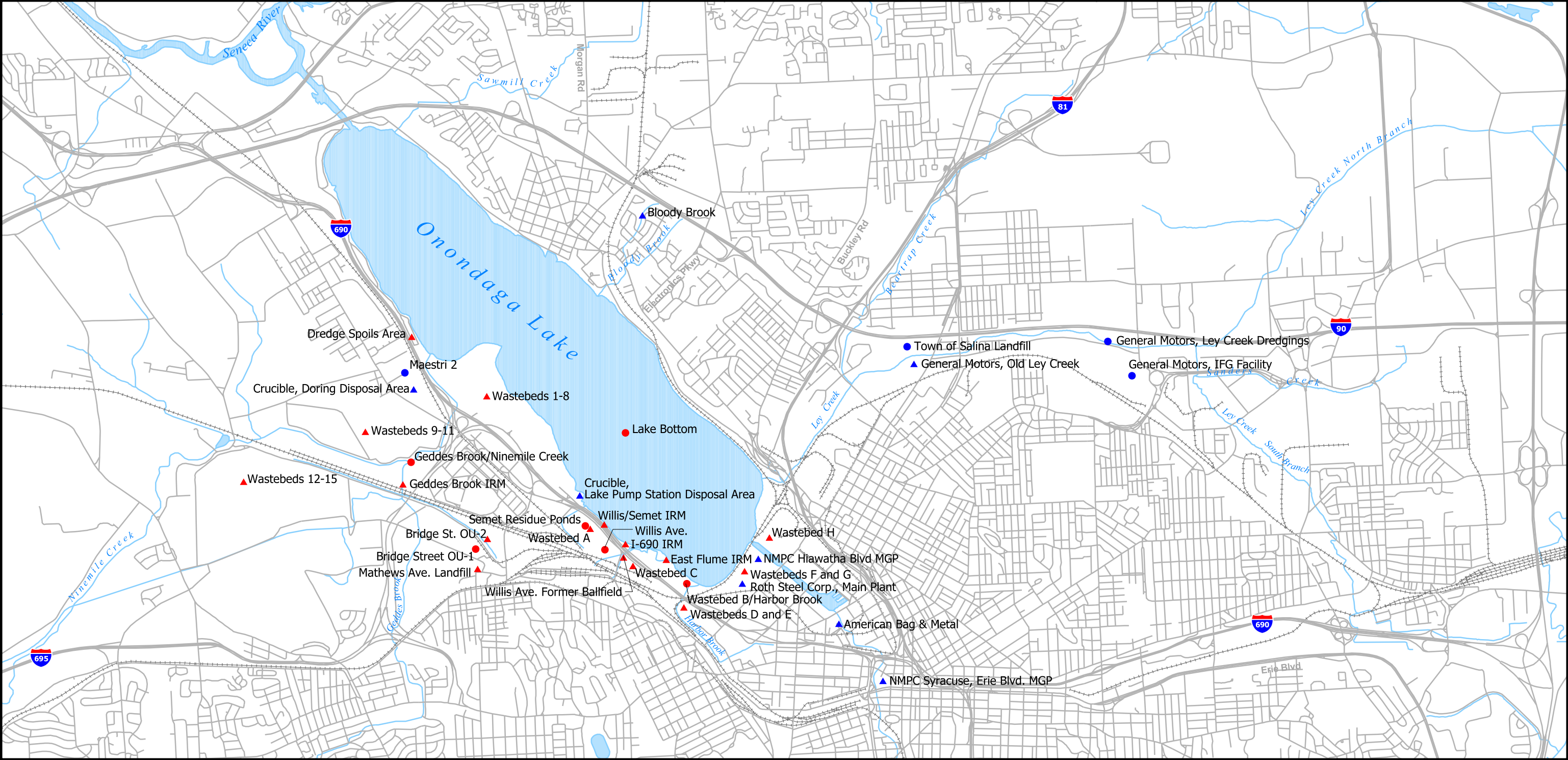
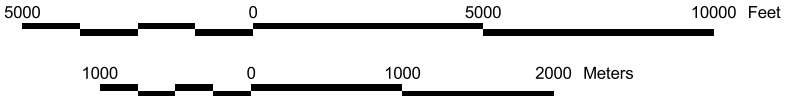


Figure 4-14. Coring Locations from 1976 Investigation



- Honeywell NPL Subsite
- ▲ Other Honeywell Site
- Non-Honeywell NPL Subsite
- ▲ Other Non-Honeywell Site



TAMS

Figure 4-15

Location of Honeywell and Other Referenced Sites