

FIGURE 3.1

Honeywell

ONONDAGA LAKE
SYRACUSE, NEW YORK

SCHEMATIC OF NATURAL
RECOVERY MECHANISMS

PARSONS

290 ELWOOD DAVIS RD, SUITE 312, LIVERPOOL, NY 13088 PHONE: (315) 451-9560

UPLAND

SHORELINE EROSION CONTROL

SHORELINE

6 IN SAND/GRAVEL HABITAT LAYER

2FT SAND (CHEMICAL ISOLATION LAYER)

EXISTING SEDIMENT BED

FIGURE 3.2

Honeywell

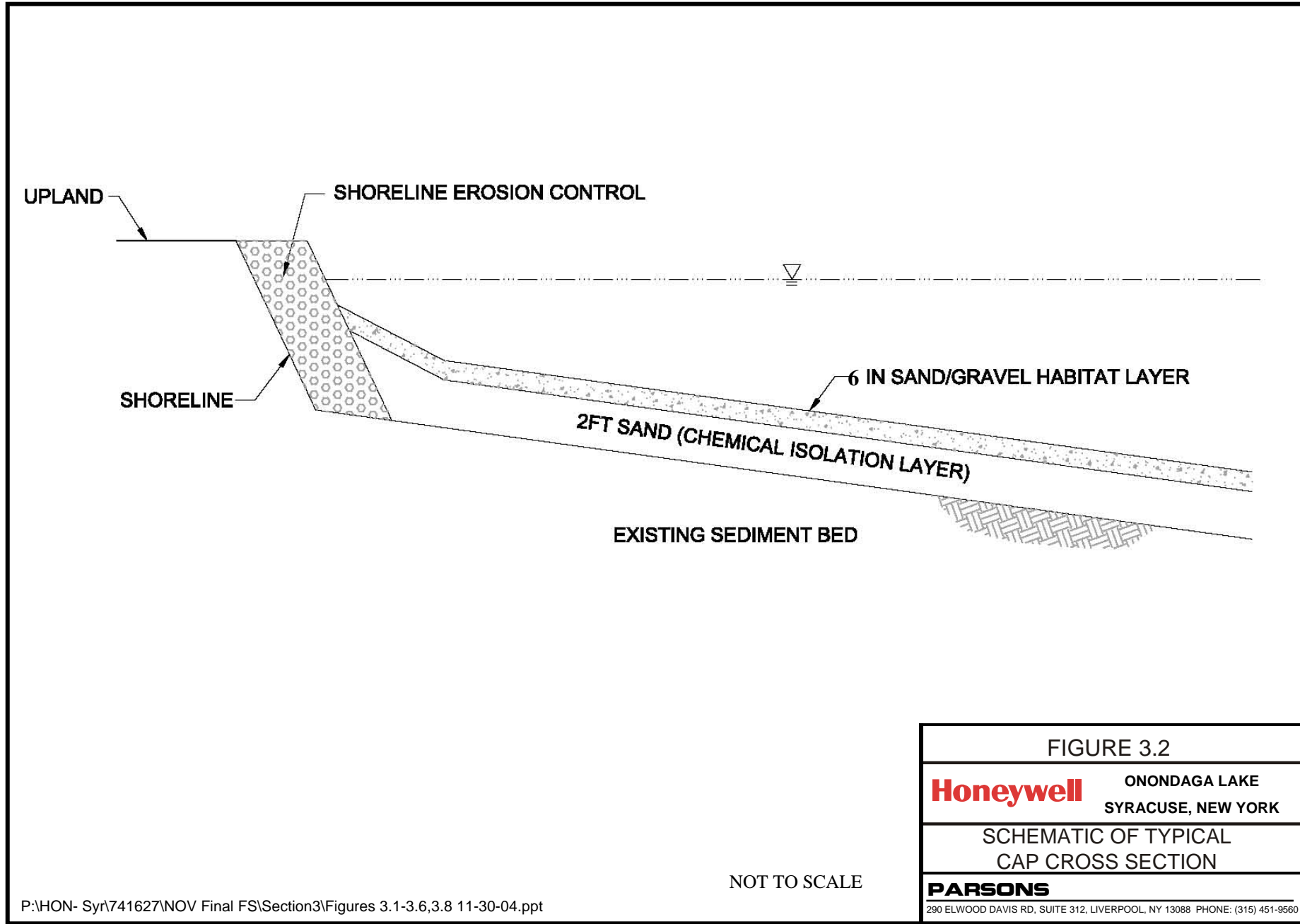
ONONDAGA LAKE
SYRACUSE, NEW YORK

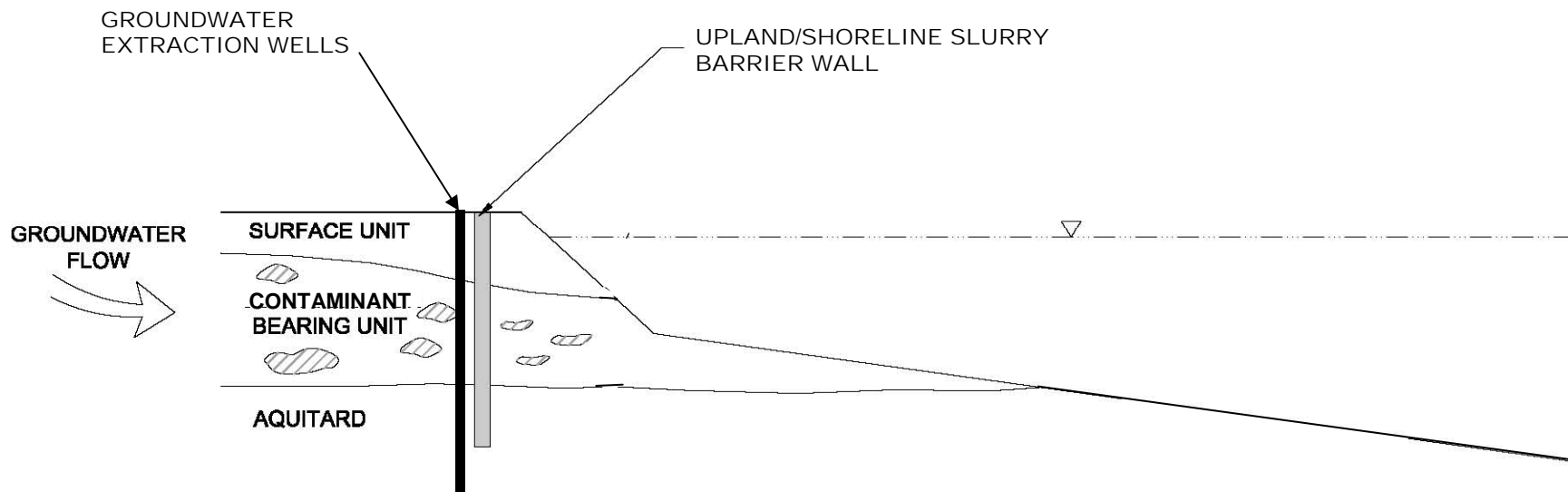
SCHEMATIC OF TYPICAL
CAP CROSS SECTION

PARSONS

290 ELWOOD DAVIS RD, SUITE 312, LIVERPOOL, NY 13088 PHONE: (315) 451-9560

NOT TO SCALE





NOT TO SCALE

FIGURE 3.3

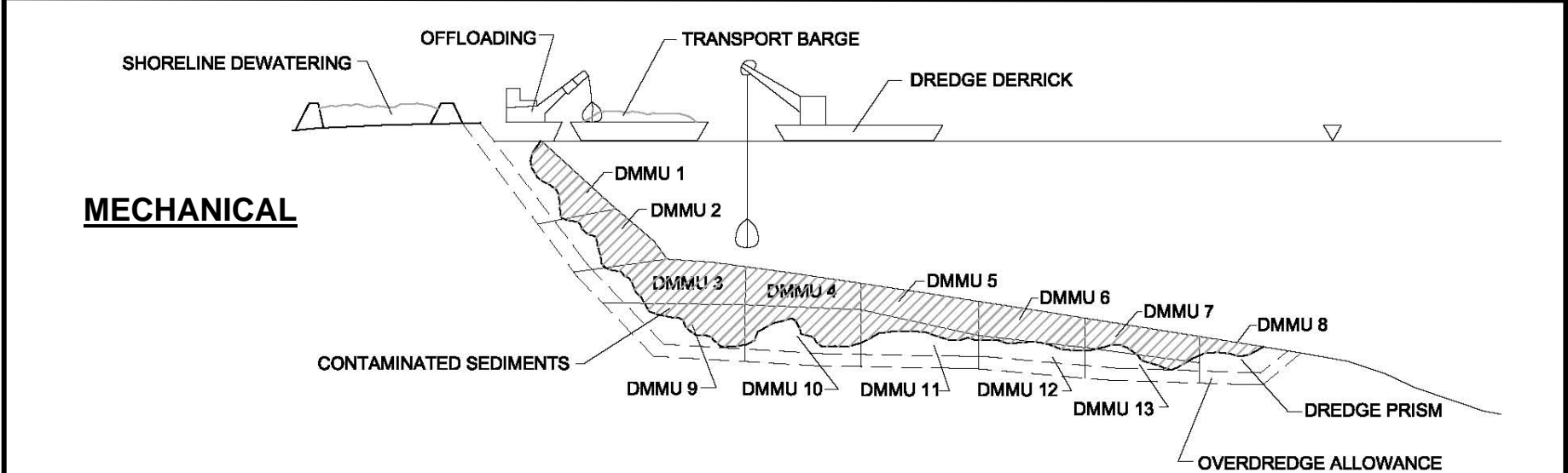
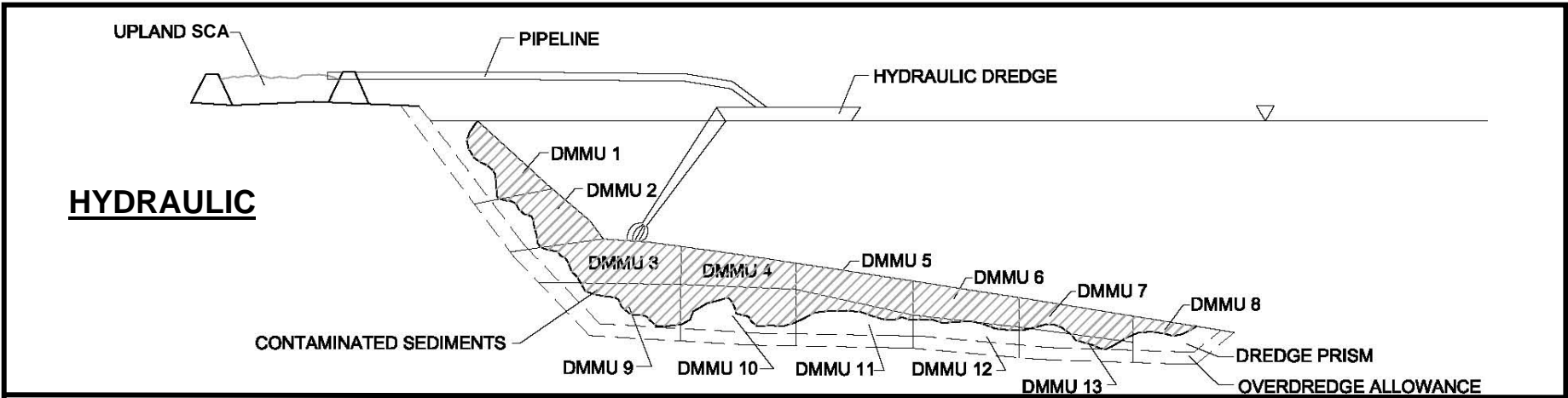
Honeywell

ONONDAGA LAKE
SYRACUSE, NEW YORK

SCHEMATIC OF TYPICAL UPLAND
BARRIER WALL

PARSONS

290 ELWOOD DAVIS RD, SUITE 312, LIVERPOOL, NY 13088 PHONE: (315) 451-9560



NOT TO SCALE

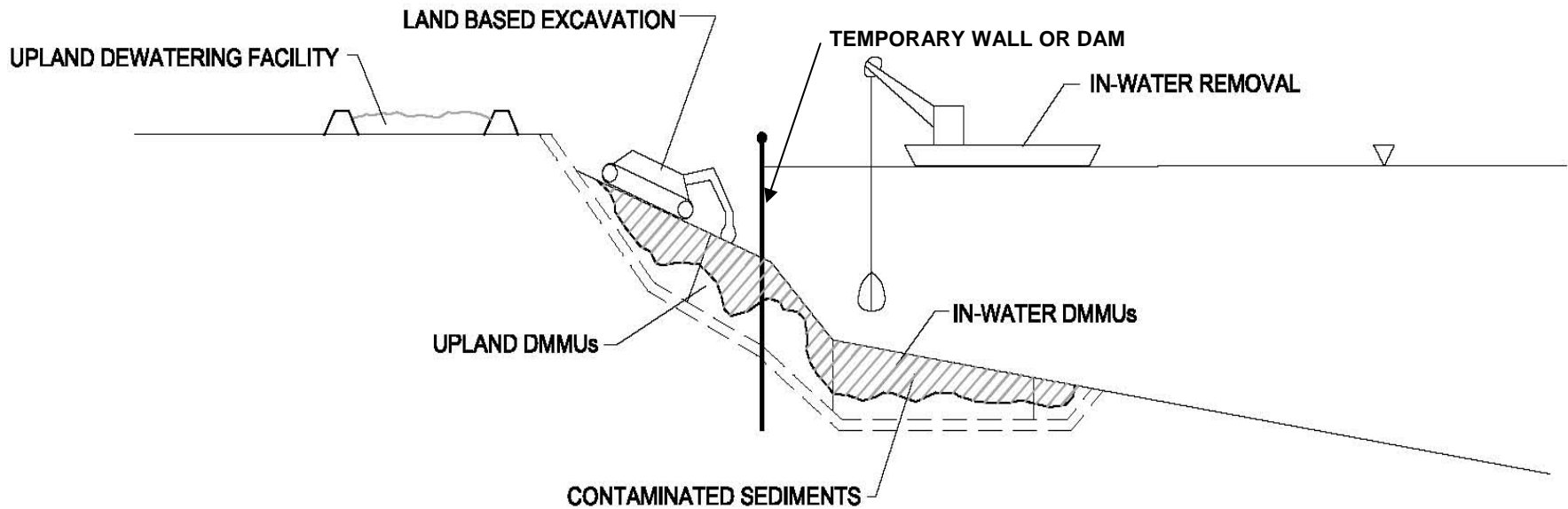
DMMU: Dredged Material Management Unit

FIGURE 3.4

Honeywell ONONDAGA LAKE
SYRACUSE, NEW YORK

SCHEMATIC OF TYPICAL
DREDGING OPERATION

PARSONS
290 ELWOOD DAVIS RD, SUITE 312, LIVERPOOL, NY 13088 PHONE: (315) 451-9560



NOT TO SCALE

DMMU: Dredged Material Management Unit

FIGURE 3.5

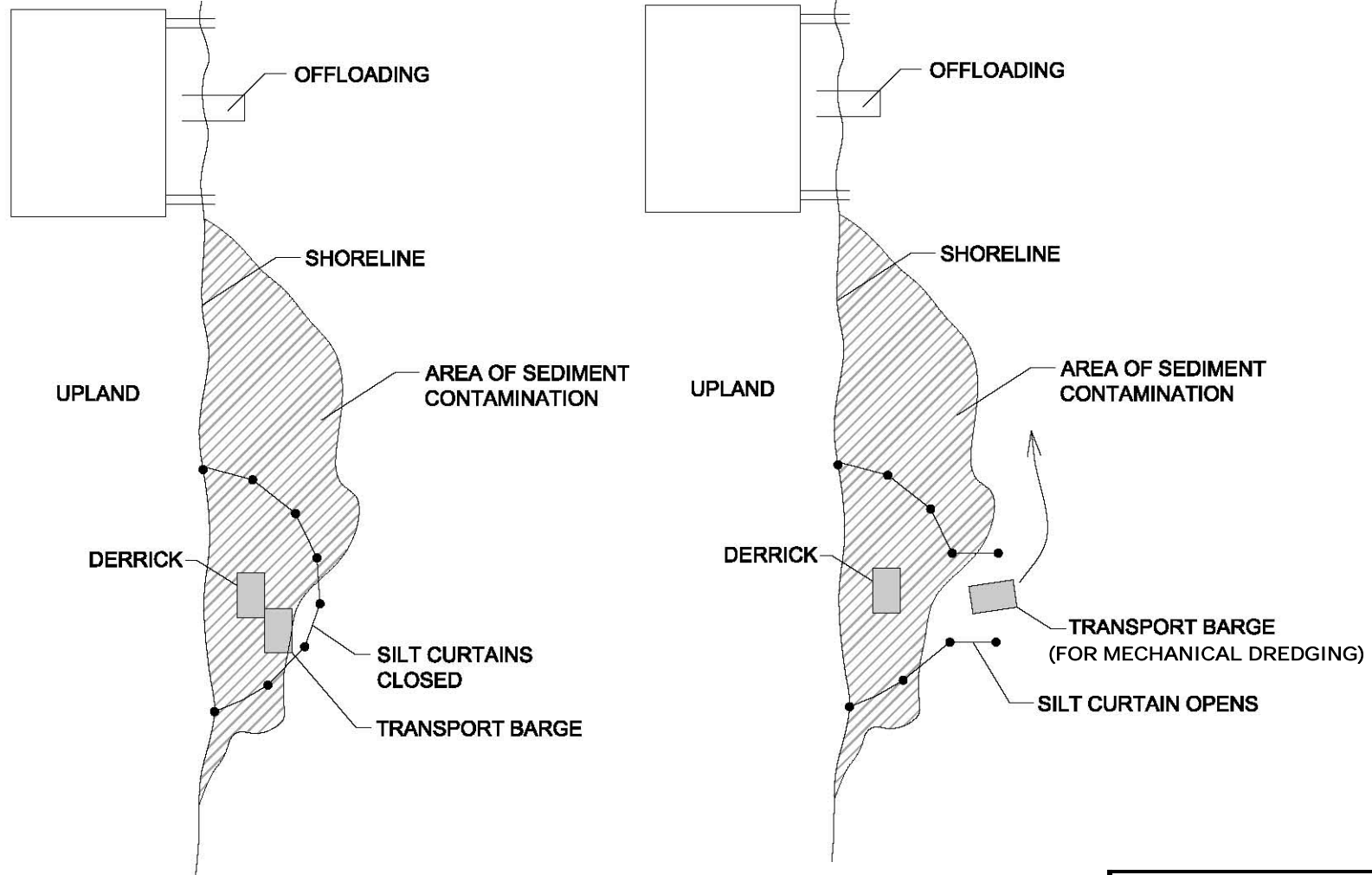
Honeywell

ONONDAGA LAKE
SYRACUSE, NEW YORK

SCHEMATIC OF TYPICAL DRY
REMOVAL OPERATION

PARSONS

290 ELWOOD DAVIS RD, SUITE 312, LIVERPOOL, NY 13088 PHONE: (315) 451-9560



**CURTAIN CLOSED
DURING DREDGING**

**CURTAIN OPEN
DURING TRANSPORT**

FIGURE 3.6	
Honeywell	ONONDAGA LAKE SYRACUSE, NEW YORK
SCHEMATIC OF SILT CURTAIN DEPLOYMENT	
PARSONS	
<small>290 ELWOOD DAVIS RD, SUITE 312, LIVERPOOL, NY 13088 PHONE: (315) 451-9560</small>	

**Mechanical
Dredging**

**Hydraulic
Dredging**

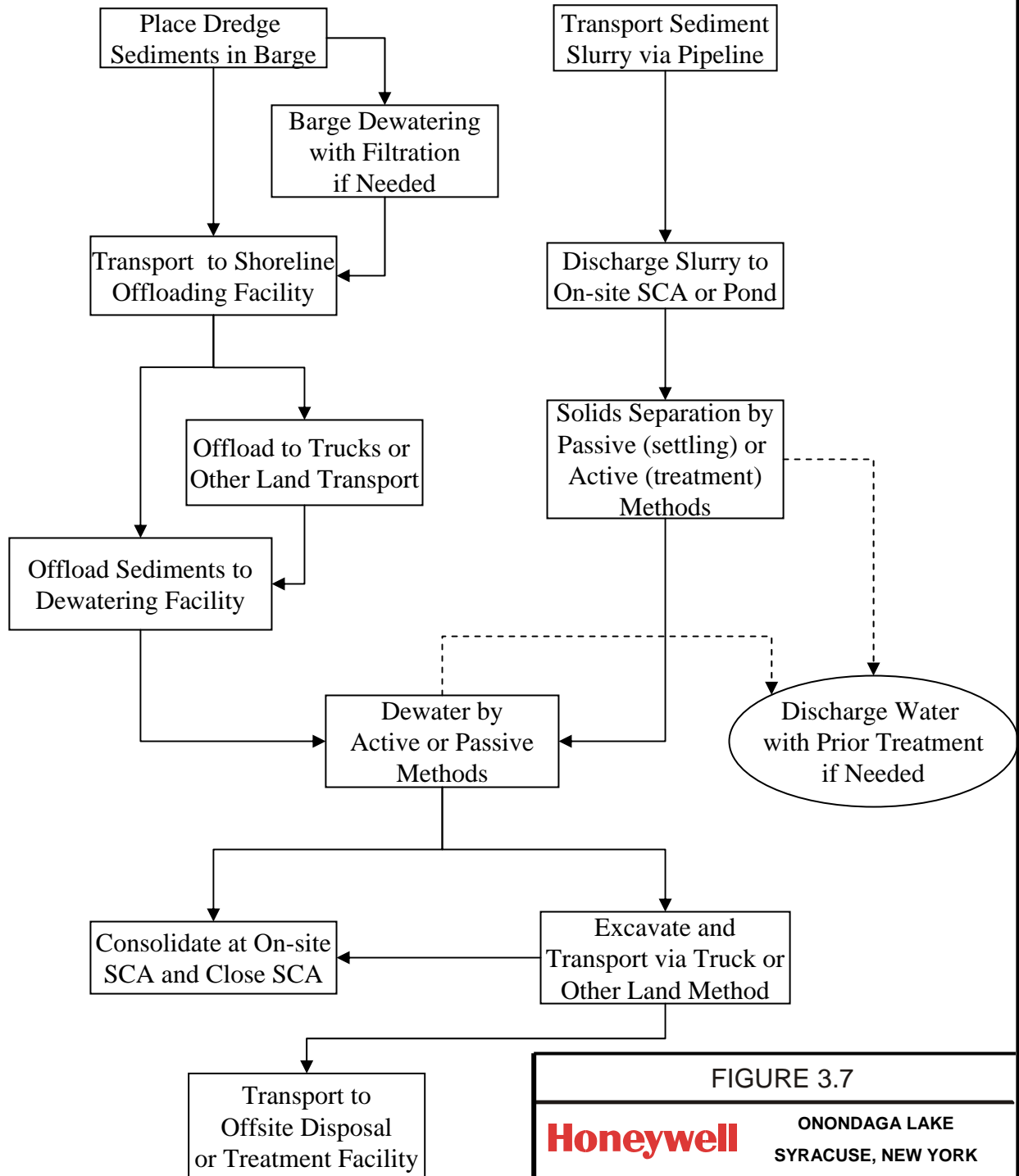


FIGURE 3.7

Honeywell

ONONDAGA LAKE
SYRACUSE, NEW YORK

FLOW CHART OF TYPICAL
DEWATERING AND
TRANSPORT PROCESS

PARSONS

290 ELWOOD DAVIS RD, SUITE 312, LIVERPOOL, NY 13088 PHONE: (315) 451-9560

SCA: Sediment Consolidation Area

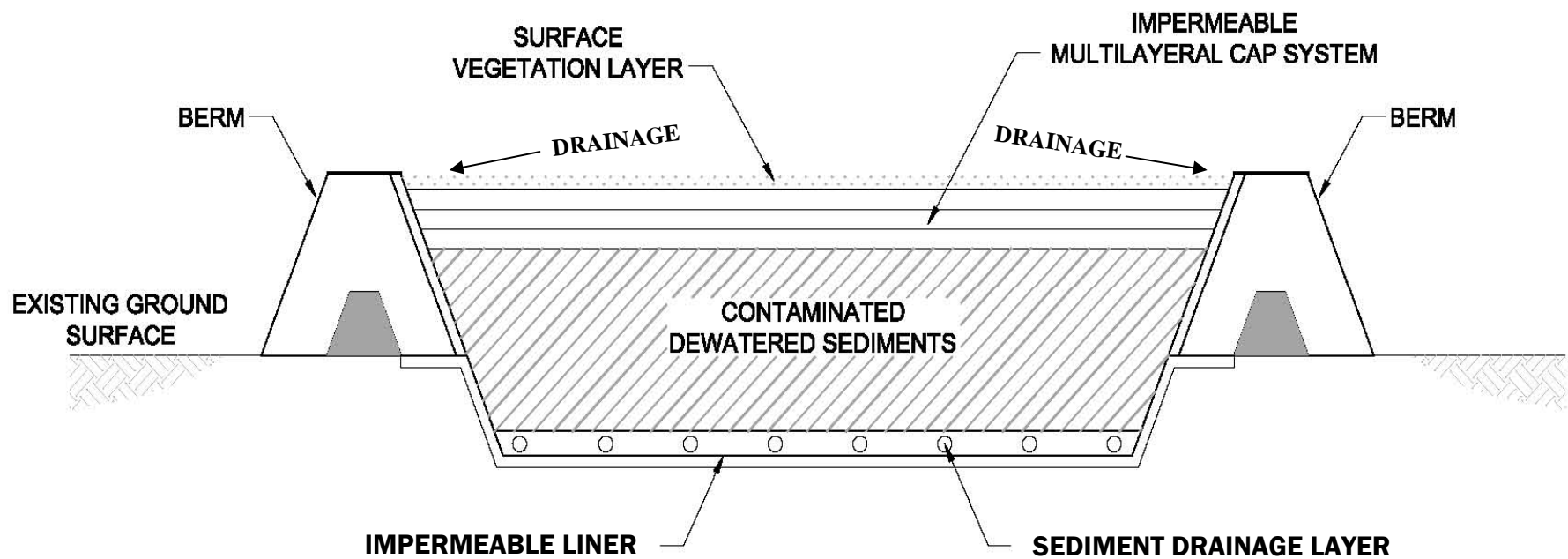


FIGURE 3.8

Honeywell

ONONDAGA LAKE
SYRACUSE, NEW YORK

SCHEMATIC OF UPLAND SEDIMENT
CONSOLIDATION AREA

PARSONS

290 ELWOOD DAVIS RD, SUITE 312, LIVERPOOL, NY 13088 PHONE: (315) 451-9560

NOT TO SCALE