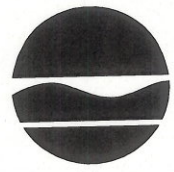


New York State Department of Environmental Conservation
Division of Environmental Remediation
Remedial Bureau D, 12th Floor
625 Broadway, Albany, New York 12233-7013
Phone: (518) 402-9676 • **Fax:** (518) 402-9020
Website: www.dec.ny.gov



Joe Martens
Commissioner

March 30, 2012

Mr. John P. McAuliffe, P.E.
Program Director, Syracuse
Honeywell
301 Plainfield Road, Suite 330
Syracuse, NY 13212

Re: Onondaga Lake Sediment Management Final Design – Addendum 1 (13 Mechanical Drawings relating to addition of thickeners to the slurry processing system)

Dear Mr. McAuliffe:

We have received and reviewed the above-referenced document, transmitted by David Steele (Parsons) in an email to my attention dated March 23, 2012, and find that the drawings contained in the submittal are appropriate. Therefore, the drawings attached to David Steele's March 23, 2012 email are approved.

Please distribute copies of the addendum, including this approval letter, to the distribution list and list of document repositories selected for this site.

Sincerely,

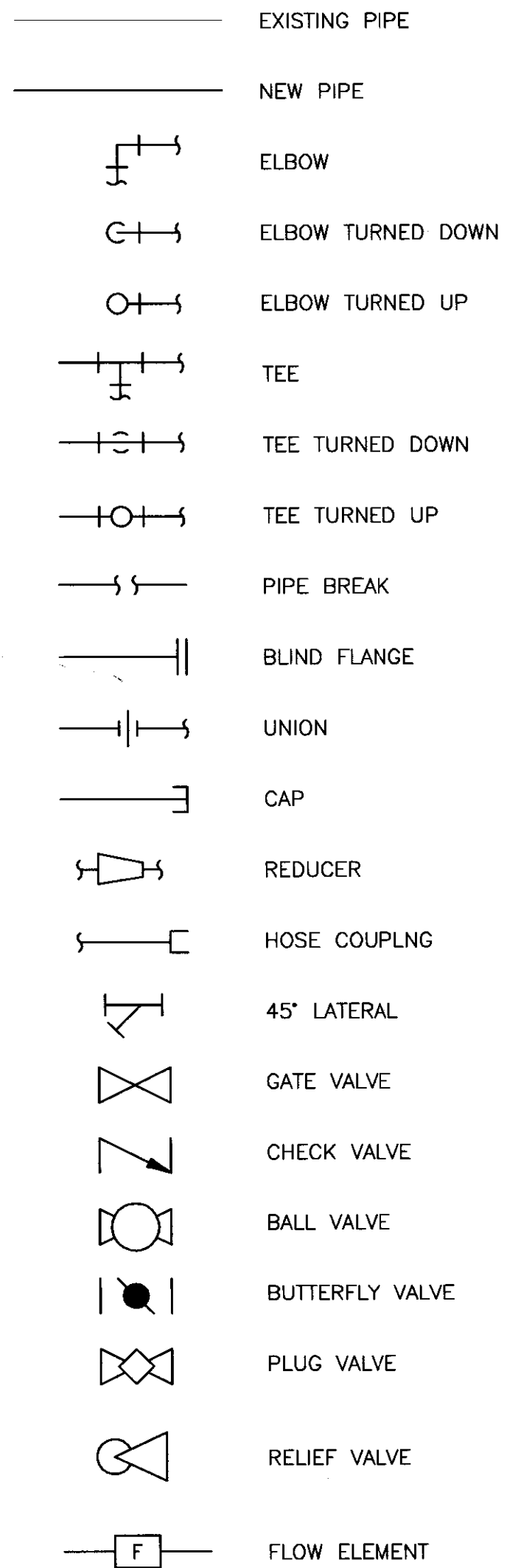
Timothy J. Larson, P.E.
Project Manager

cc: B. Israel, Esq. - Arnold & Porter
J. Gregg – NYSDEC
J. Davis - NYSDOL, Albany
J. Heath, Esq.
T. Joyal, Esq.
J. Shenandoah
P. Blue – Parsons
M. McDonald - Honeywell

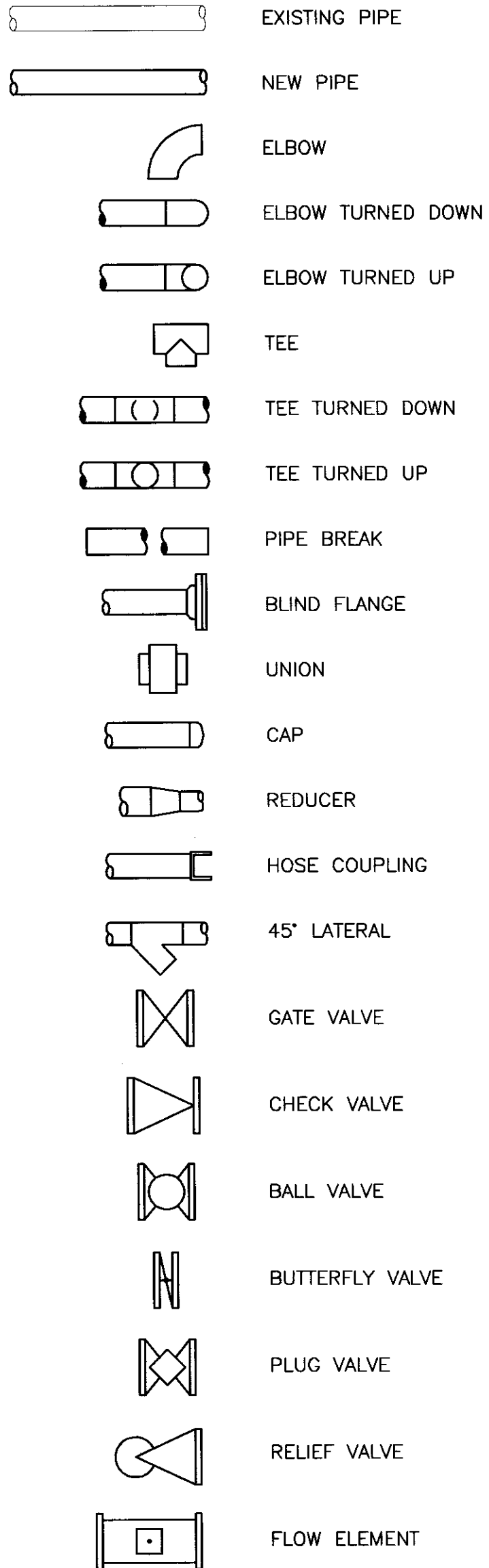
H. Kuhl
R. Nunes - USEPA, NYC
M. Sergott - NYSDOH, Troy
F. Kirschner
C. Waterman
A. Lowry
D. Steele - Parsons

NOTES:
THIS DRAWING IS THE PROPERTY OF HONEYWELL. IT IS FURNISHED SUBJECT TO RETURN ON DEMAND AND THE CONDITION THAT THE INFORMATION AND TECHNOLOGY EMBODIED HEREIN SHALL NOT BE DISCLOSED OR USED, AND THE DRAWING SHALL NOT BE REPRODUCED OR COPIED IN WHOLE OR IN PART EXCEPT AS PREVIOUSLY AUTHORIZED IN WRITING. ANY PERSON WHO MAY RECEIVE OR OBSERVE THIS DESIGN WILL BE HELD STRICTLY LIABLE FOR ANY VIOLATION WHETHER WILLFUL OR NEGLIGENT.

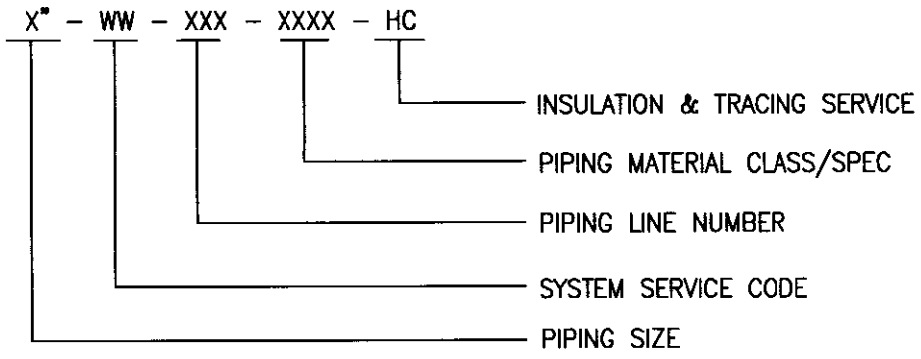
SINGLE LINE PIPING



DOUBLE LINE PIPING



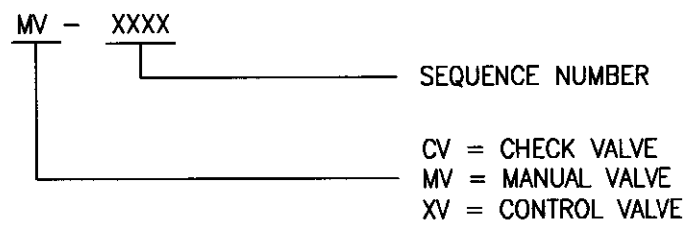
LINE NUMBER IDENTIFICATION



INSULATION SERVICE AND TRACING DESIGNATIONS

INSULATION	TRACING
AS = ANTI-SWEAT	ET = ELECTRICAL
CC = COLD CONSERVATION	GT = GLYCOL
HC = HEAT CONSERVATION	ST = STEAM
PP = PERSONAL PROTECTION	
VJ = VACUUM JACKET	

VALVE IDENTIFICATION



ABBREVIATIONS:

AFF	ABOVE FINISHED FLOOR
BOP	BOTTOM OF PIPE
CL OR C	CENTERLINE EL ELEVATION
EL	ELEVATION
FF	FINISHED FLOOR
RED	REDUCER
TOP	TOP OF PIPE
TOS	TOP OF STEEL
TYP	TYPICAL
WP	WORK POINT CENTERLINE

PIPING SERVICE DESIGNATION

SYMBOL	SERVICE
BWW	- BACK WASHWATER
CHEM	- CHEMICAL
CNDS	- CONDENSATE
DR	- DRAIN
EFF	- EFFLUENT
HPSW	- HP SEALWATER
INF	- INFILUENT
OG	- OFF GAS
O/F	- OVERFLOW
PLW	- PLANT WATER(REUSE)
POL	- POLYMER
PRCS	- PROCESS
PSW	- PUMP SEAL WATER
PW	- PROCESS WATER
RTN	- RETURN
SLU	- SLURRY
SWW	- SCREEN WASH WATER
SPLY	- SUPPLY
ST	- STEAM
U/F	- UNDERFLOW
V	- VENT
W	- WATER (POTABLE)
WW	- WASTE WATER

EQUIPMENT NOTATION

B	- BLOWER (AIR)
BFP	- BELT FILTER PRESS
BS	- BAR SCREEN
C	- COMPRESSOR
DCH	- DREDGE CUTTER HEAD
DP	- DREDGE PUMP
E	- HEAT EXCHANGER EQUIP.
EQB	- EQUALIZATION BASIN
F	- FAN
M	- MOTOR
MCC	- MOTOR CONTROL CENTER
MX	- MIXER MOTOR
OWS	- OIL WATER SEPARATOR
P	- PUMP
S	- SLUMP
SC	- SCREEN
T	- TANK
TT	- THICKENER TANK

PIPING MATERIAL CLASS

SYMBOL	MATERIAL
BI	- BLACK IRON
CS	- CARBON STEEL
CU	- COPPER
DI	- DUCTILE IRON
FRP	- FIBER REINFORCED PLASTICS
GALV	- GALVANIZED
HDPE	- HIGH DENSITY POLYETHYLENE
PVC	- POLYVINYL CHLORIDE
SS	- STAINLESS STEEL
STL	- STEEL

GENERAL NOTES: (PROCESS EQUIPMENT/PIPING)

- PIPELINE LINE NUMBERS ARE PROVIDED ON THE PIPING PLANS TO IDENTIFY PIPE SIZE, MATERIAL, SERVICE, SEQUENTIAL NUMBERING AND INSULATION. SEE TYPICAL PIPELINE LINE NUMBER IDENTIFICATION REFERENCE ON THIS SHEET.
- FIELD VERIFY ALL EQUIPMENT AND PIPING INSTALLATION LOCATIONS AND ELEVATIONS PRIOR TO FABRICATION OF PIPING ASSEMBLIES AND PIPE SUPPORTS PRIOR TO INSTALLATION AND ASSEMBLY OF COMPONENTS.
- FIELD COORDINATE PIPING ARRANGEMENTS AROUND VENDOR SUPPLIED EQUIPMENT THAT DIFFERS FROM THE EQUIPMENT/PIPING SHOWN ON THESE PLANS. MAJOR EQUIPMENT SHOWN IS BASED ON PRELIMINARY VENDOR SUPPLIED SUBMITTALS AND MAY CHANGE PRIOR TO ARRIVING AT THE JOB SITE. CONTACT THE PROJECT ENGINEER IF CLARIFICATIONS ARE REQUIRED.
- THE PIPING AND EQUIPMENT SHOWN ON THESE DRAWINGS REPRESENTS THE PRIMARY COMPONENTS THAT WILL BE INSTALLED. INSTALLER SHALL COORDINATE INSTALLATION OF COMPONENTS SHOWN ON THESE PLANS WITH THE P&ID'S AND CONTROLS DRAWINGS PRIOR TO FABRICATION AND INSTALLATION OF EQUIPMENT AND PIPING.
- IN ORDER TO PERMIT PROPER FILLING AND DRAINING OF PIPELINES THE CONTRACTOR SHALL INSTALL VALVED HIGH POINT VENTS AND LOW POINT DRAINS (THESE ITEMS ARE GENERALLY NOT INDICATED ON P&IDS OR THE PIPING DRAWINGS) WHERE REQUIRED TO SUIT THE PIPING CONFIGURATION. OPEN ENDS OF THESE VENT/DRAIN VALVES SHALL BE SUITABLY PLUGGED OR CAPPED.
- UNLESS OTHERWISE SHOWN ON THE DRAWINGS, THE SIZE OF THE VENTS/DRAINS SHALL BE:
VENT / DRAIN
1/2" / 3/4" FOR LINES 2" AND SMALLER
3/4" / 1" FOR LINES 2-1/2" THRU 6"
3/4" / 1-1/2" FOR LINES 8" THRU 12"
3/4" / 2" FOR LINES 14" AND LARGER
* 1/2" FOR 1/2" LINE SIZE
- SEE CIVIL, ARCHITECTURAL, STRUCTURAL, MECHANICAL, INSTRUMENTATION AND ELECTRICAL DRAWINGS FOR FINAL PLANS RELATED TO THEIR DESIGN COMPONENTS.
- INSTALL PIPE SUPPORTS AS REQUIRED FOR ALL PIPELINES SHOWN ON THE PIPING PLANS.
- ELEVATIONS FOR PIPING INSTALLED ON GRADE ARE NOT SHOWN ON PLANS. PIPELINES INSTALLED ON GRADE SHOULD BE SUPPORTED AND GUIDED WITH FIELD FABRICATED SUPPORTS AND GUIDES. PIPELINE CROSSINGS AT GRADE MAY REQUIRE ADDITIONAL FITTINGS TO OFFSET PIPELINE ELEVATIONS AT PIPING INTERSECTIONS; ALL FITTINGS ARE NOT SHOWN ON THE PLANS.
- FLOWMETERS SHOULD BE INSTALLED WITH A MINIMUM OF 5 PIPE DIAMETERS STRAIGHT PIPE UPSTREAM OF THE FLOWMETER AND 3 PIPE DIAMETERS DOWNSTREAM. IF ADDITIONAL SPACE IS AVAILABLE 10 DIAMETERS UPSTREAM AND 5 DIAMETERS DOWNSTREAM OF THE FLOWMETER IS PREFERRED.

IT IS A VIOLATION OF LAW FOR ANY PERSON, UNLESS HE IS ACTING UNDER THE DIRECTION OF A LICENSED PROFESSIONAL ENGINEER OR LAND SURVEYOR, TO ALTER AN ITEM IN ANY WAY. IF AN ITEM BEARING THE SEAL OF AN ENGINEER OR LAND SURVEYOR IS ALTERED, THE ALTERING ENGINEER OR LAND SURVEYOR SHALL AFFIX TO THE ITEM HIS SEAL AND THE NOTATION "ALTERED BY" FOLLOWED BY HIS SIGNATURE AND THE DATE OF SUCH ALTERATION, AND A SPECIFIC DESCRIPTION OF THE ALTERATION.

NO.	DESCRIPTION	DATE	DRAWN	CHK'D	APP'VD
0	ISSUED FOR CONSTRUCTION	1/25/12	JTS	XH	TCD
DRAWN BY	JTS	DATE	1/25/12	SEAL	
CHECKED BY	XH	DATE	1/25/12		
APPROVED BY	TCD	DATE	1/25/12		
PROJECT MGR.	PEB	DATE	1/25/12		

PARSONS
COMMERCIAL TECHNOLOGY GROUP

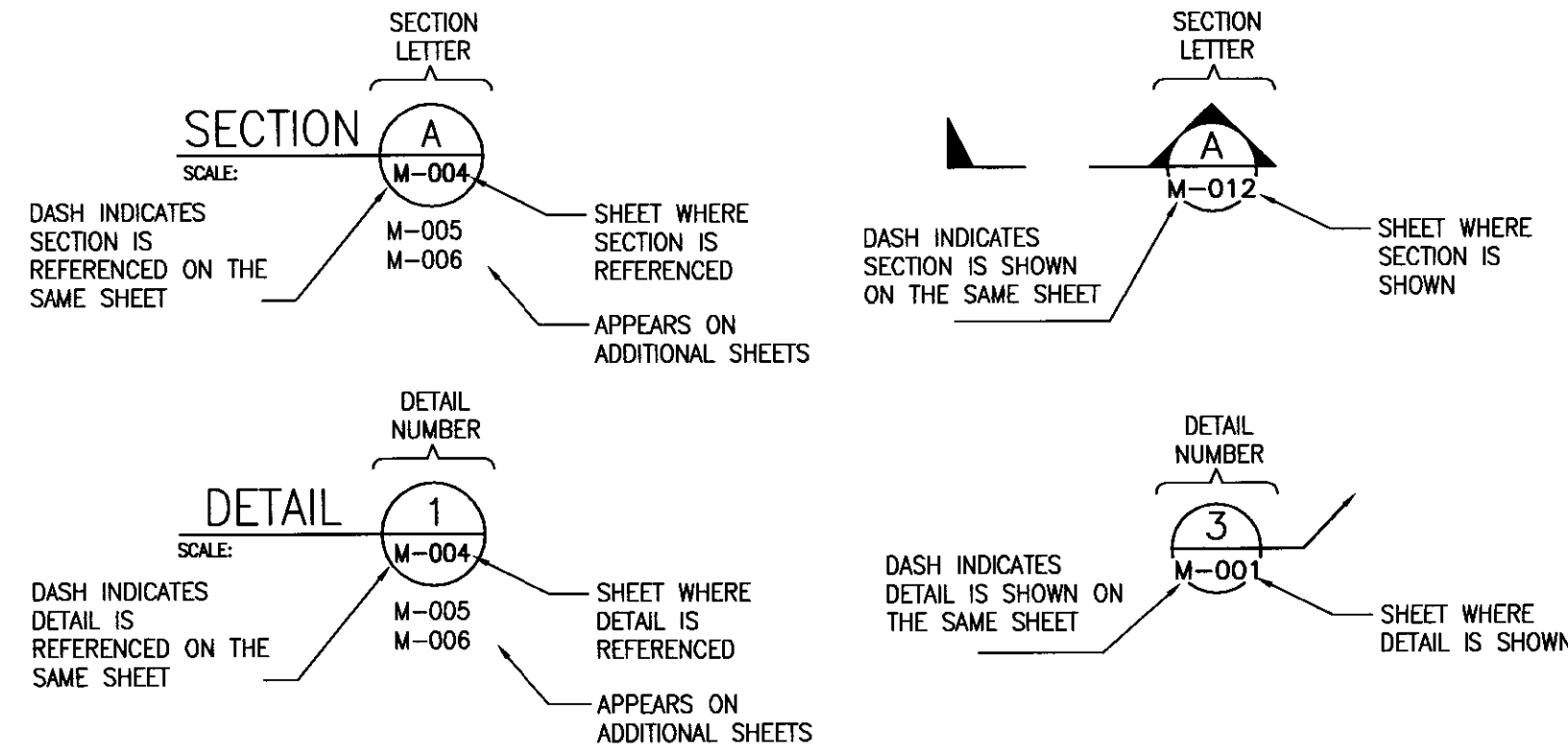
OFFICE 301 PLAINFIELD ROAD
SYRACUSE, NY 13212
(315) 451-9560
JOB 444853
WSS 04620

Honeywell
ONONDAGA LAKE
SEDIMENT MANAGEMENT DESIGN
SYRACUSE, NEW YORK

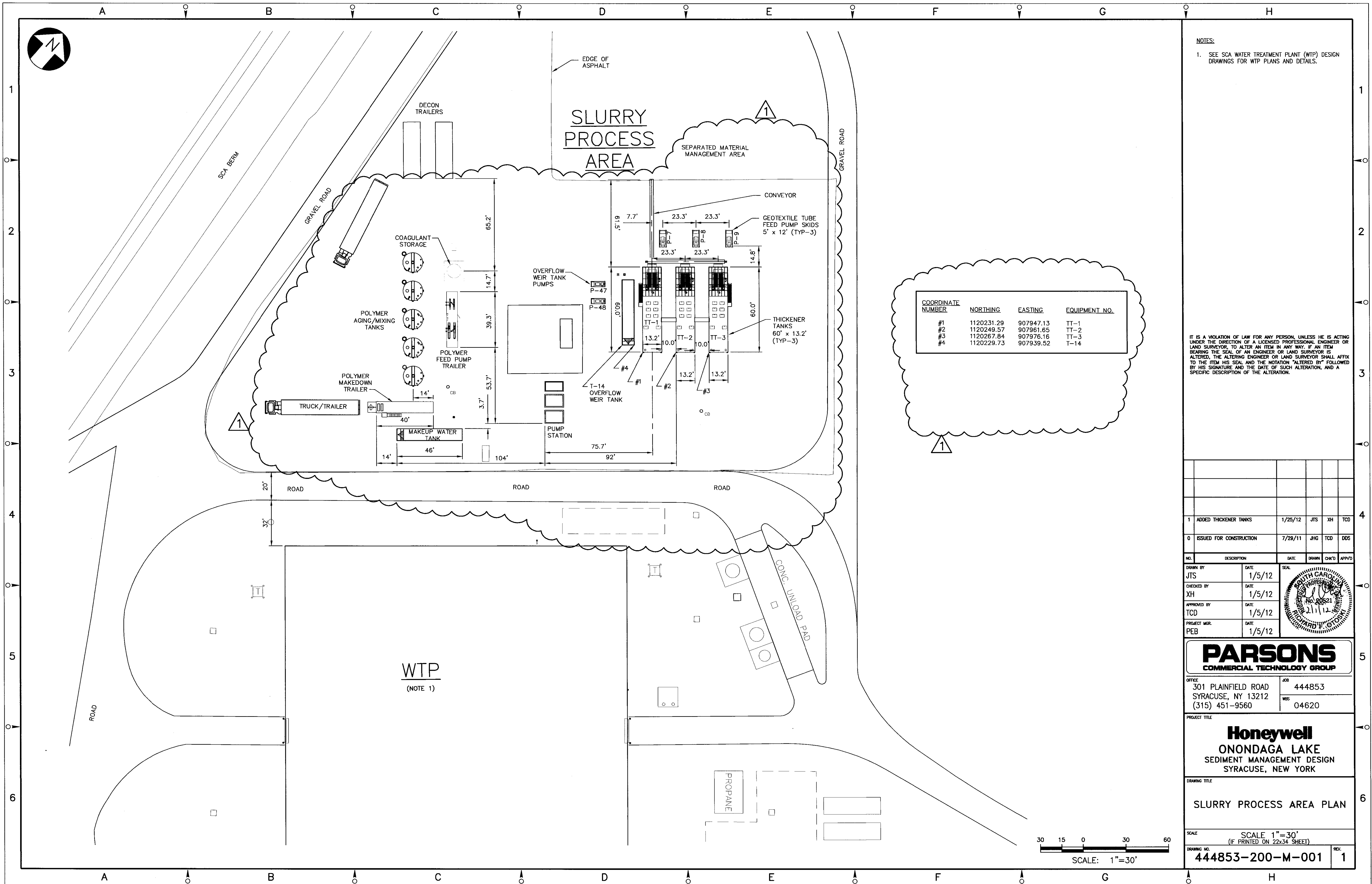
DRAWING TITLE
**PIPING
GENERAL NOTES AND LEGEND**

SCALE NO SCALE
(IF PRINTED ON 22x34 SHEET)
DRAWING NO. 444853-200-M-000
REV. 0

SECTION AND DETAIL MARKERS



NOTES:
THIS DRAWING IS THE PROPERTY OF HONEYWELL. IT IS TO BE RETURNED TO HONEYWELL UPON DEMAND AND THE CONDITION THAT THE INFORMATION AND TECHNOLOGY EMBODIED HEREIN SHALL NOT BE REPRODUCED OR COPIED IN WHOLE OR IN PART EXCEPT AS PREVIOUSLY AUTHORIZED IN WRITING. ANY PERSON WHO MAY RECEIVE OR OBSERVE THIS DESIGN WILL BE HELD STRICTLY LIABLE FOR ANY VIOLATION WHETHER WILLFUL OR NEGLIGENT.



NOTES:
1. SEE SCA WATER TREATMENT PLANT (WTP) DESIGN DRAWINGS FOR WTP PLANS AND DETAILS.

IT IS A VIOLATION OF LAW FOR ANY PERSON, UNLESS HE IS ACTING UNDER THE DIRECTION OF A LICENSED PROFESSIONAL ENGINEER OR LAND SURVEYOR, TO ALTER AN ITEM IN ANY WAY. IF AN ITEM BEARING THE SEAL OF AN ENGINEER OR LAND SURVEYOR IS ALTERED, THE ALTERING ENGINEER OR LAND SURVEYOR SHALL AFFIX TO THE ITEM HIS SEAL AND THE NOTATION "ALTERED BY" FOLLOWED BY HIS SIGNATURE AND THE DATE OF SUCH ALTERATION, AND A SPECIFIC DESCRIPTION OF THE ALTERATION.

1	ADDED THICKENER TANKS	1/25/12	JTS	XH	TCD
0	ISSUED FOR CONSTRUCTION	7/29/11	JHG	TCD	DOS
NO.	DESCRIPTION	DATE	DRAWN	CHK'D	APP'D
DRAWN BY	JTS	DATE	1/5/12	SEAL	
CHECKED BY	XH	DATE	1/5/12		
APPROVED BY	TCD	DATE	1/5/12		
PROJECT MGR.	PEB	DATE	1/5/12		

PARSONS
COMMERCIAL TECHNOLOGY GROUP

OFFICE
301 PLAINFIELD ROAD
SYRACUSE, NY 13212
(315) 451-9560

JOB
444853

WBS
04620

PROJECT TITLE
Honeywell
ONONDAGA LAKE
SEDIMENT MANAGEMENT DESIGN
SYRACUSE, NEW YORK

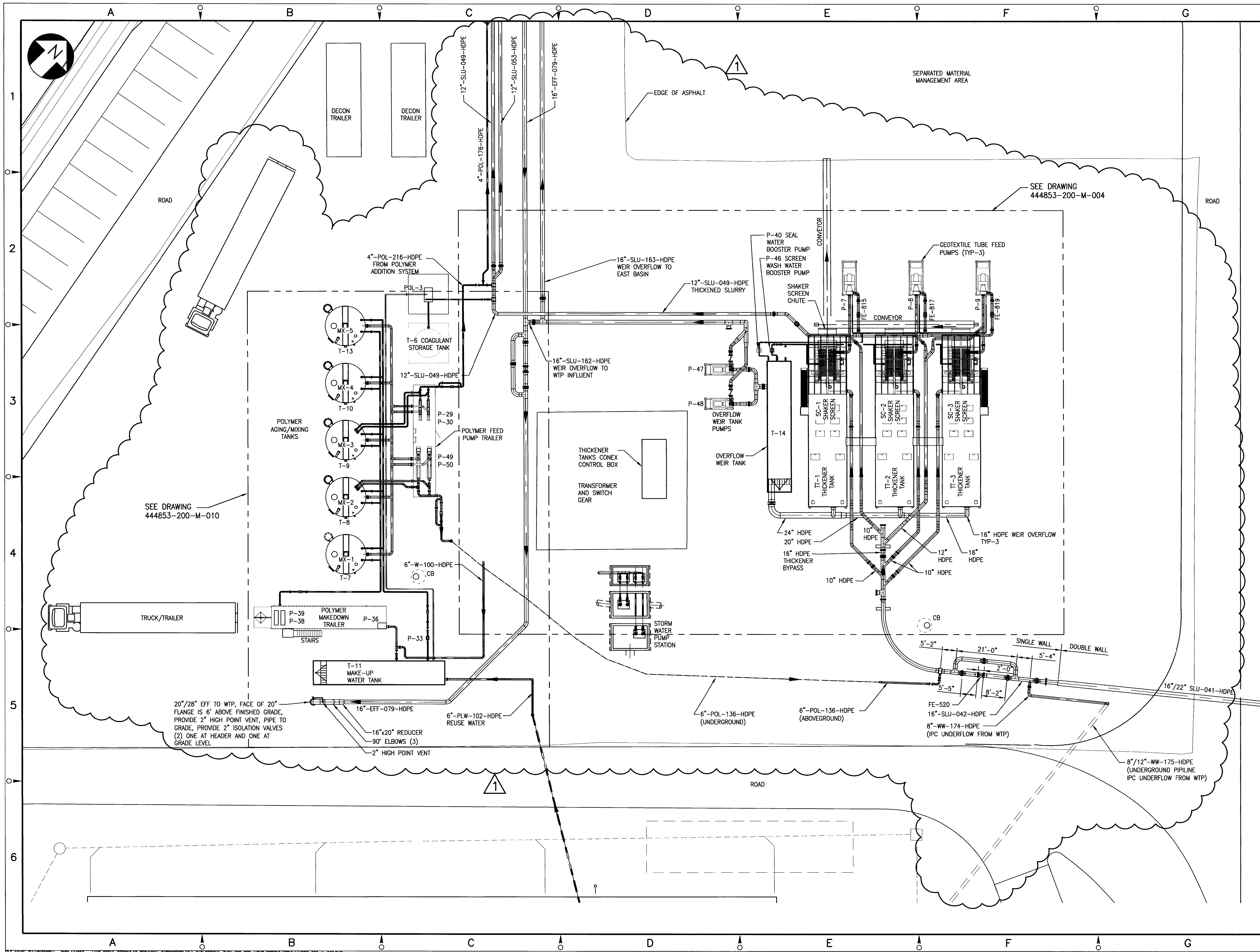
DRAWING TITLE
SLURRY PROCESS AREA PLAN

SCALE
SCALE 1"=30'
(IF PRINTED ON 22x34 SHEET)

DRAWING NO.
444853-200-M-001

REV.
1

NOTICE: THE PROPERTY OF HONEYWELL IS FURNISHED SUBJECT TO RETURN ON DEMAND AND THE CONDITION THAT THE INFORMATION AND TECHNOLOGY EMBODIED IN THIS DRAWING IS TO BE USED ONLY FOR THE PROJECT AND SITE SPECIFICALLY IDENTIFIED HEREIN. NO PART OF THIS DRAWING IS TO BE REPRODUCED OR TRANSMITTED IN ANY FORM OR BY ANY MEANS, ELECTRONIC OR MECHANICAL, INCLUDING PHOTOCOPYING, RECORDING, OR BY ANY INFORMATION STORAGE AND RETRIEVAL SYSTEM, WITHOUT THE WRITTEN PERMISSION OF HONEYWELL. ANY PERSON WHO MAY RECEIVE OR OBSERVE THIS DESIGN WILL BE HELD STRICTLY LIABLE FOR ANY VIOLATION WHETHER WILLFUL OR NEGLIGENT.



NOTES:

- COORDINATE EQUIPMENT INSTALLATION LOCATIONS WITH PROCESS AREA EQUIPMENT LOCATION PLAN DRAWING 444853-200-M-001. EQUIPMENT LOCATIONS SHOULD BE FIELD ADJUSTED TO MATCH FINAL SITE CONDITIONS.
- PIPE ROUTING SHOWN REFLECTS THE PRIMARY PIPELINES ONLY. SEE P&ID DRAWINGS INCLUDED WITH THIS DESIGN PACKAGE FOR ALL EQUIPMENT, PIPING AND INSTRUMENTATION COMPONENTS TO BE INSTALLED.
- INSTALLATION LOCATIONS OF MAJOR EQUIPMENT AND FIELD ROUTING OF PIPING SHOULD FOLLOW THE GENERAL ARRANGEMENT SHOWN ON THIS DRAWING.
- SEE CIVIL DRAWING 444853-200-C-302 FOR UNDERGROUND AND UTILITY SYSTEMS PIPING INSTALLATION.

IT IS A VIOLATION OF LAW FOR ANY PERSON, UNLESS HE IS ACTING UNDER THE DIRECTION OF A LICENSED PROFESSIONAL ENGINEER OR LAND SURVEYOR, TO ALTER AN ITEM IN ANY WAY. IF AN ITEM BEARING THE SEAL OF AN ENGINEER OR LAND SURVEYOR IS ALTERED, THE ALTERING ENGINEER OR LAND SURVEYOR SHALL AFFIX TO THE ITEM HIS SEAL AND THE NOTATION "ALTERED BY" FOLLOWED BY HIS SIGNATURE AND THE DATE OF SUCH ALTERATION, AND A SPECIFIC DESCRIPTION OF THE ALTERATION.

SCALE: 1/16"=1'-0"

NO.	DESCRIPTION	DATE	DRAWN	CHK'D	APP'D
1	ADDED THICKENER TANKS AND MODIFIED PIPING LAYOUT	1/25/12	JTS	XH	TCD
0	ISSUED FOR CONSTRUCTION	7/29/11	JTS	XH	DDS
NO.	DESCRIPTION	DATE	DRAWN	CHK'D	APP'D
JTS	1/5/12				
XH	1/5/12				
TCD	1/5/12				
PEB	1/5/12				

PARSONS
COMMERCIAL TECHNOLOGY GROUP

OFFICE: 301 PLAINFIELD ROAD
SYRACUSE, NY 13212
(315) 451-9560
JOB: 444853
WBS: 04620

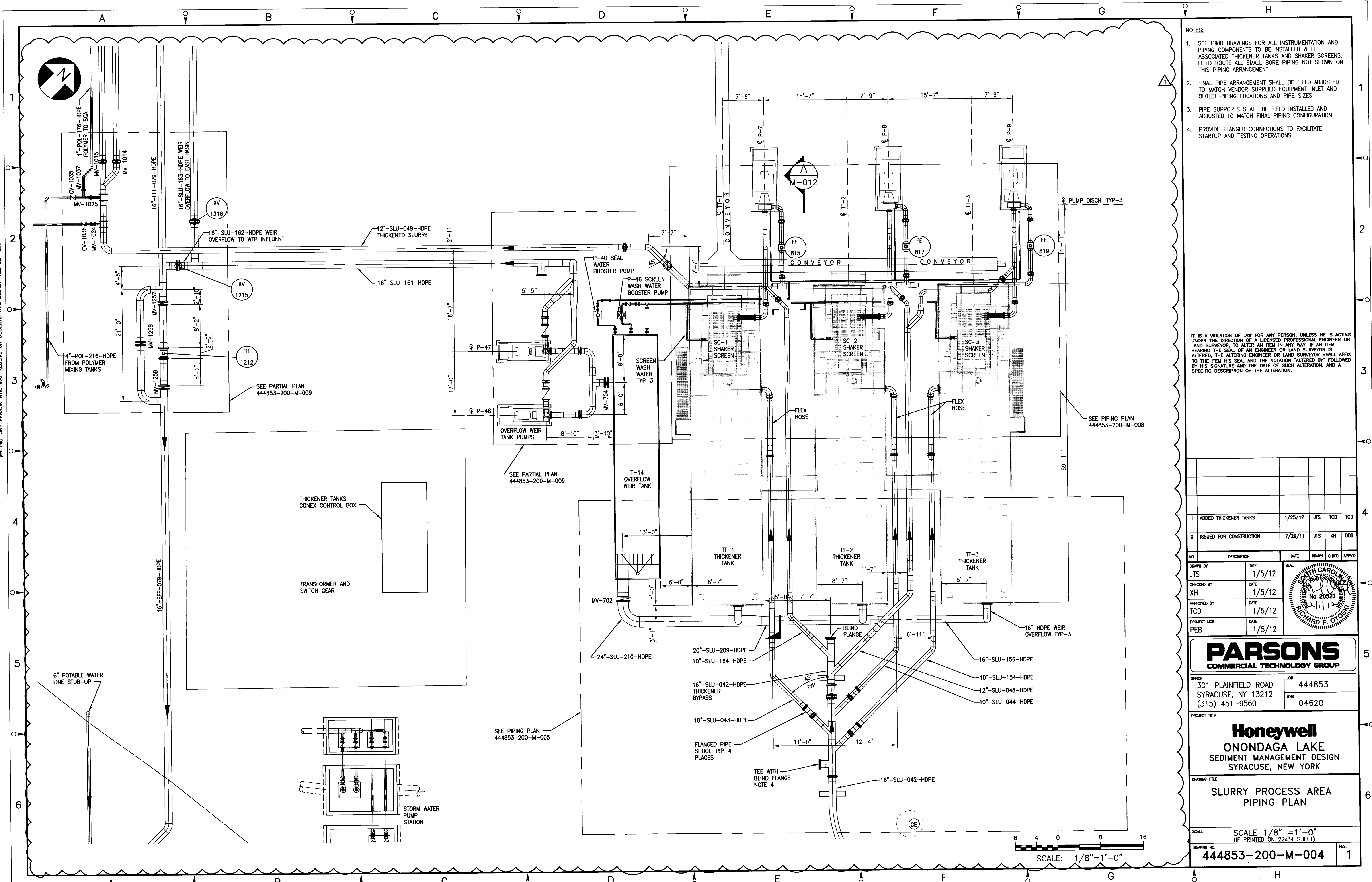
PROJECT TITLE:
Honeywell
ONONDAGA LAKE
SEDIMENT MANAGEMENT DESIGN
SYRACUSE, NEW YORK

DRAWING TITLE:
SLURRY PROCESS AREA
EQUIPMENT AND YARD PIPNG
PLAN

SCALE: SCALE 1/16" = 1'-0"
(IF PRINTED ON 22x34 SHEET)

DRAWING NO.: **444853-200-M-002**
REV. 1

NOTICE: THIS DRAWING IS THE PROPERTY OF HONEYWELL. IT IS FURNISHED SUBJECT TO RETURN ON DEMAND AND THE CONDITION THAT THE INFORMATION AND TECHNOLOGY EMBODIED HEREIN SHALL NOT BE REPRODUCED OR COPIED IN WHOLE OR IN PART EXCEPT AS PREVIOUSLY AUTHORIZED IN WRITING. ANY PERSON WHO MAY RECEIVE OR OBSERVE THIS DESIGN WILL BE HELD STRICTLY LIABLE FOR ANY VIOLATION WHETHER WILLFUL OR NEGLIGENT.



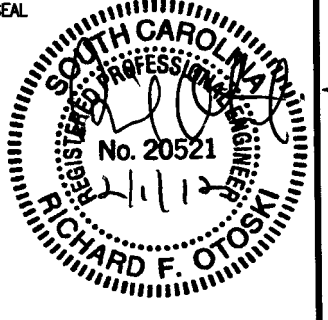
NOTES:

1. SEE P&ID DRAWINGS FOR ALL INSTRUMENTATION AND PIPING COMPONENTS TO BE INSTALLED WITH ASSOCIATED THICKENER TANKS AND SHAKER SCREENS. FIELD ROUTE ALL SMALL BORE PIPING NOT SHOWN ON THIS PIPING ARRANGEMENT.
2. FINAL PIPE ARRANGEMENT SHALL BE FIELD ADJUSTED TO MATCH VENDOR SUPPLIED EQUIPMENT INLET AND OUTLET PIPING LOCATIONS AND PIPE SIZES.
3. PIPE SUPPORTS SHALL BE FIELD INSTALLED AND ADJUSTED TO MATCH FINAL PIPING CONFIGURATION.
4. PROVIDE FLANGED CONNECTIONS TO FACILITATE STARTUP AND TESTING OPERATIONS.

IT IS A VIOLATION OF LAW FOR ANY PERSON, UNLESS HE IS ACTING UNDER THE DIRECTION OF A LICENSED PROFESSIONAL ENGINEER OR LAND SURVEYOR, TO ALTER AN ITEM IN ANY WAY. IF AN ITEM BEARING THE SEAL OF AN ENGINEER OR LAND SURVEYOR IS ALTERED, THE ALTERING ENGINEER OR LAND SURVEYOR SHALL AFFIX TO THE ITEM HIS SEAL AND THE NOTATION "ALTERED BY" FOLLOWED BY HIS SIGNATURE AND THE DATE OF SUCH ALTERATION, AND A SPECIFIC DESCRIPTION OF THE ALTERATION.

1	ADDED THICKENER TANKS	1/25/12	JTS	TCD	TCD
0	ISSUED FOR CONSTRUCTION	7/29/11	JTS	XH	DDG

NO.	DESCRIPTION	DATE	DRAWN	CHK'D	APP'D
DRAWN BY	JTS	DATE	1/5/12	SEAL	
CHECKED BY	XH	DATE	1/5/12		
APPROVED BY	TCD	DATE	1/5/12		
PROJECT MGR.	PEB	DATE	1/5/12		



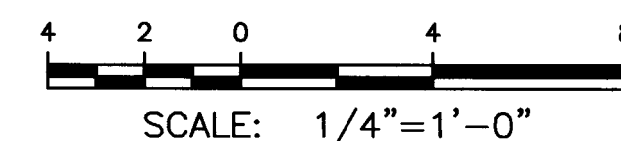
PARSONS
COMMERCIAL TECHNOLOGY GROUP

OFFICE: 301 PLAINFIELD ROAD
SYRACUSE, NY 13212
(315) 451-9560
JOB: 444853
WBS: 04620

PROJECT TITLE:
Honeywell
ONONDAGA LAKE
SEDIMENT MANAGEMENT DESIGN
SYRACUSE, NEW YORK

DRAWING TITLE:
SLURRY PROCESS AREA
PIPING PLAN

SCALE: 1/8" = 1'-0"
(IF PRINTED ON 22x34 SHEET)
DRAWING NO.: 444853-200-M-004
REV: 1



- IT IS A VIOLATION OF LAW FOR ANY PERSON, UNLESS HE IS ACTING UNDER THE DIRECTION OF A LICENSED PROFESSIONAL ENGINEER OR LAND SURVEYOR, TO ALTER AN ITEM IN ANY WAY, IF AN ITEM BEARING THE SEAL OF AN ENGINEER OR LAND SURVEYOR IS ALTERED, THE ALTERING ENGINEER OR LAND SURVEYOR SHALL AFFIX TO THE ITEM HIS SEAL AND THE NOTATION "ALTERED BY" FOLLOWED BY HIS SIGNATURE AND THE DATE OF SUCH ALTERATION, AND A SPECIFIC DESCRIPTION OF THE ALTERATION.

PARSONS
COMMERCIAL TECHNOLOGY GROUP

PROJECT TITLE

Honeywell

ONONDAGA LAKE

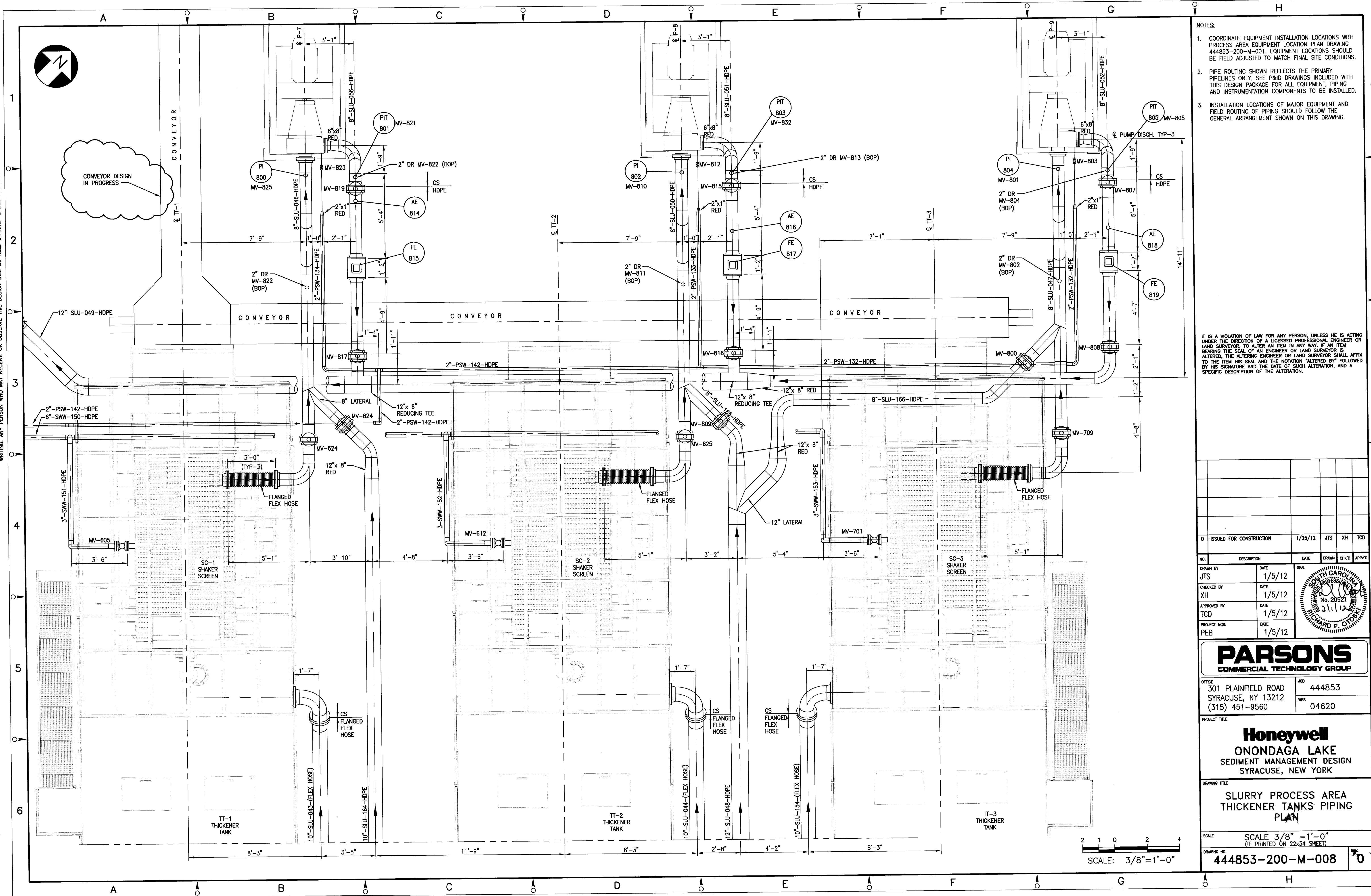
SEDIMENT MANAGEMENT DESIGN

SYRACUSE, NEW YORK

SCALE SCALE 1/4" = 1'-0"
(IF PRINTED ON 22x34 SHEET)

DRAWING NO.	REV.
444853-200-M-005	1

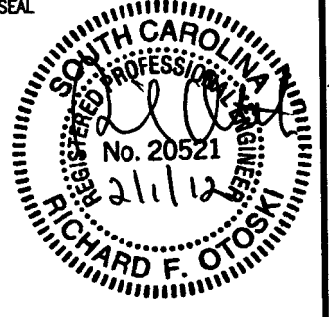
NOTICE: THE PROPERTY OF HONEYWELL IS FURNISHED SUBJECT TO RETURN ON DEMAND AND THE CONDITION THAT THE INFORMATION AND TECHNOLOGY EMBODIED IN THIS DRAWING IS NOT TO BE REPRODUCED OR COPIED IN WHOLE OR IN PART EXCEPT AS PREVIOUSLY AUTHORIZED IN WRITING. ANY PERSON WHO MAY RECEIVE OR OBSERVE THIS DESIGN WILL BE HELD STRICTLY LIABLE FOR ANY VIOLATION WHETHER WILLFUL OR NEGLIGENT.



- NOTES:
- COORDINATE EQUIPMENT INSTALLATION LOCATIONS WITH PROCESS AREA EQUIPMENT LOCATION PLAN DRAWING 444853-200-M-001. EQUIPMENT LOCATIONS SHOULD BE FIELD ADJUSTED TO MATCH FINAL SITE CONDITIONS.
 - PIPE ROUTING SHOWN REFLECTS THE PRIMARY PIPELINES ONLY. SEE P&ID DRAWINGS INCLUDED WITH THIS DESIGN PACKAGE FOR ALL EQUIPMENT, PIPING AND INSTRUMENTATION COMPONENTS TO BE INSTALLED.
 - INSTALLATION LOCATIONS OF MAJOR EQUIPMENT AND FIELD ROUTING OF PIPING SHOULD FOLLOW THE GENERAL ARRANGEMENT SHOWN ON THIS DRAWING.

IT IS A VIOLATION OF LAW FOR ANY PERSON, UNLESS HE IS ACTING UNDER THE DIRECTION OF A LICENSED PROFESSIONAL ENGINEER OR LAND SURVEYOR, TO ALTER AN ITEM IN ANY WAY. IF AN ITEM BEARING THE SEAL OF AN ENGINEER OR LAND SURVEYOR IS ALTERED, THE ALTERING ENGINEER OR LAND SURVEYOR SHALL AFFIX TO THE ITEM HIS SEAL AND THE NOTATION "ALTERED BY" FOLLOWED BY HIS SIGNATURE AND THE DATE OF SUCH ALTERATION, AND A SPECIFIC DESCRIPTION OF THE ALTERATION.

0 ISSUED FOR CONSTRUCTION		1/25/12	JTS	XH	TCD
NO.	DESCRIPTION	DATE	DRAWN	CHK'D	APP'D
DRAWN BY	JTS	DATE	1/5/12	SEAL	
CHECKED BY	XH	DATE	1/5/12		
APPROVED BY	TCD	DATE	1/5/12		
PROJECT MGR.	PEB	DATE	1/5/12		



PARSONS
COMMERCIAL TECHNOLOGY GROUP

OFFICE: 301 PLAINFIELD ROAD
SYRACUSE, NY 13212
(315) 451-9560

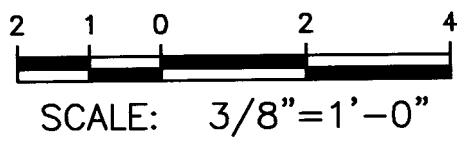
JOB: 444853
WBS: 04620

PROJECT TITLE:
Honeywell
ONONDAGA LAKE
SEDIMENT MANAGEMENT DESIGN
SYRACUSE, NEW YORK

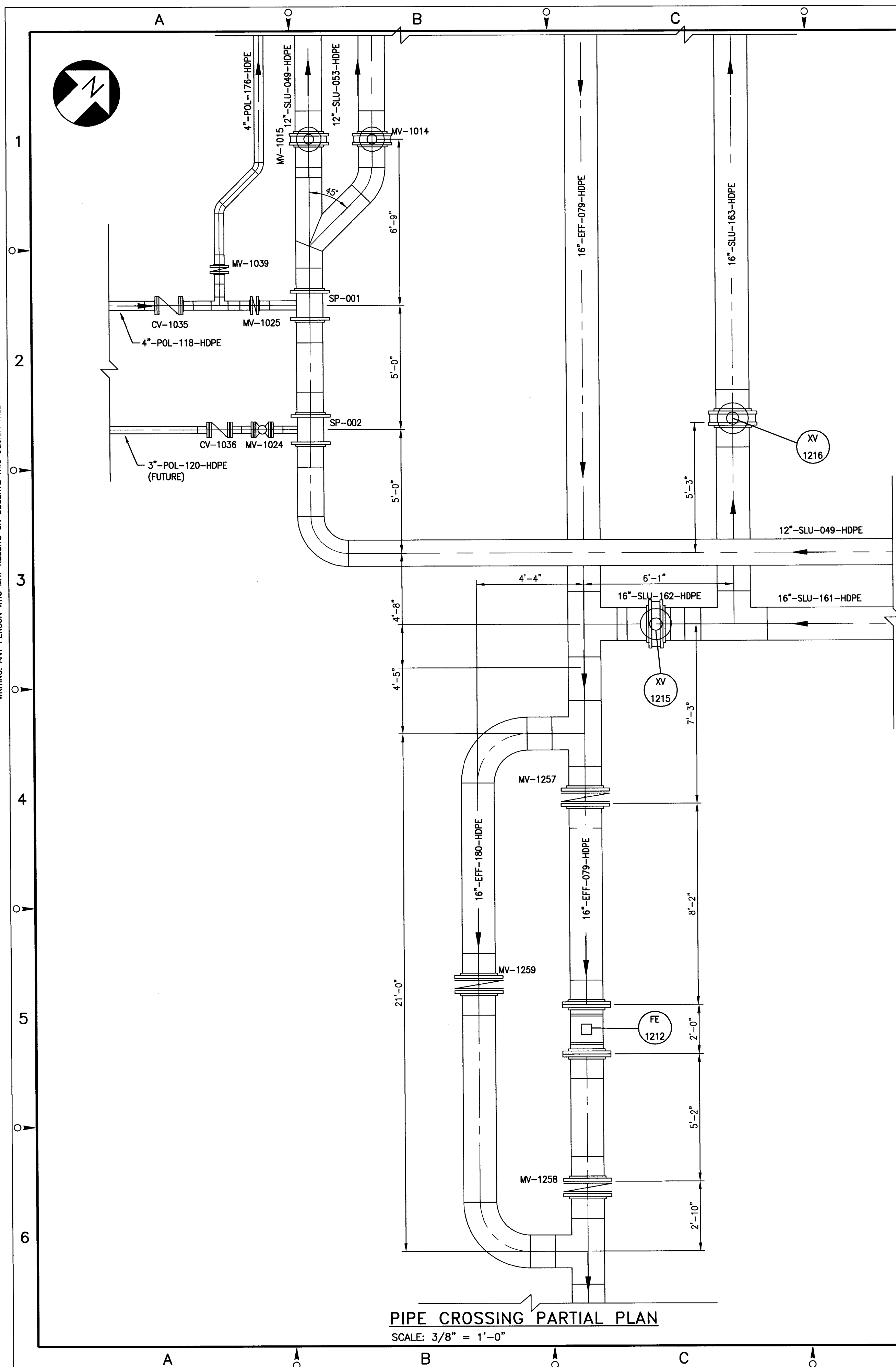
DRAWING TITLE:
SLURRY PROCESS AREA
THICKENER TANKS PIPING
PLAN

SCALE: 3/8" = 1'-0"
(IF PRINTED ON 22x34 SHEET)

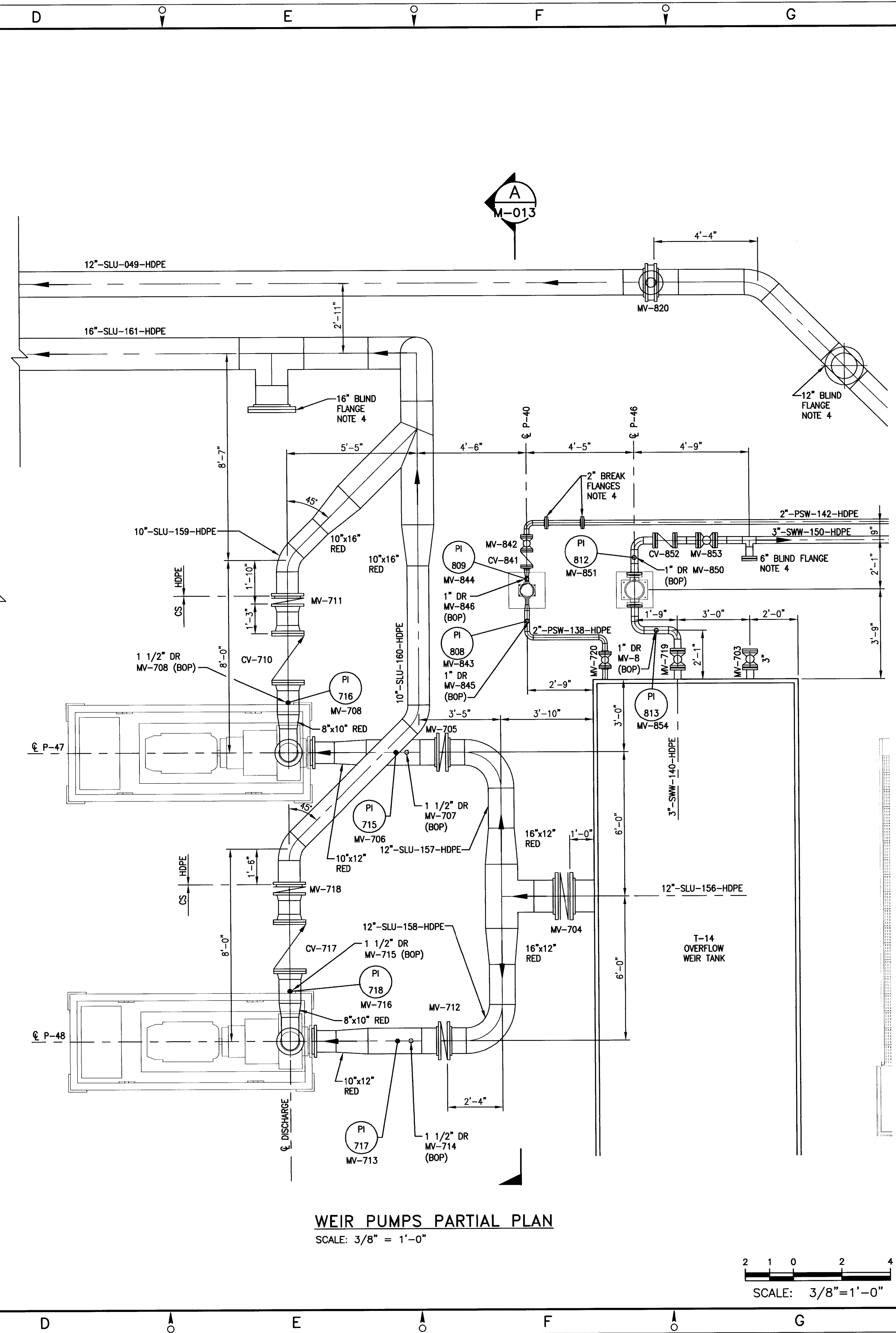
DRAWING NO.: **444853-200-M-008**



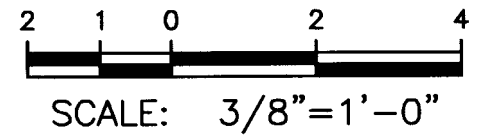
NOTICE: THIS DRAWING IS THE PROPERTY OF HONEYWELL. IT IS FURNISHED SUBJECT TO THE CONDITION THAT THE INFORMATION AND TECHNOLOGY EMBODIED HEREIN SHALL NOT BE DISCLOSED OR USED IN WHOLE OR IN PART EXCEPT AS PREVIOUSLY AUTHORIZED BY HONEYWELL. ANY PERSON WHO MAY RECEIVE OR OBSERVE THIS DESIGN WILL BE HELD STRICTLY LIABLE FOR ANY VIOLATION WHETHER WILLFUL OR NEGLIGENT.



PIPE CROSSING PARTIAL PLAN
SCALE: 3/8" = 1'-0"



WEIR PUMPS PARTIAL PLAN
SCALE: 3/8" = 1'-0"



NOTES:

- COORDINATE EQUIPMENT INSTALLATION LOCATIONS WITH PROCESS AREA EQUIPMENT LOCATION PLAN DRAWING 444853-200-M-001. EQUIPMENT LOCATIONS SHOULD BE FIELD ADJUSTED TO MATCH FINAL SITE CONDITIONS.
- PIPE ROUTING SHOWN REFLECTS THE PRIMARY PIPELINES ONLY. SEE P&ID DRAWINGS INCLUDED WITH THIS DESIGN PACKAGE FOR ALL EQUIPMENT, PIPING AND INSTRUMENTATION COMPONENTS TO BE INSTALLED.
- INSTALLATION LOCATIONS OF MAJOR EQUIPMENT AND FIELD ROUTING OF PIPING SHOULD FOLLOW THE GENERAL ARRANGEMENT SHOWN ON THIS DRAWING.
- FLANGED CONNECTION OR PIPE SPOOL PROVIDED FOR STARTUP AND TESTING.

IT IS A VIOLATION OF LAW FOR ANY PERSON, UNLESS HE IS ACTING UNDER THE DIRECTION OF A LICENSED PROFESSIONAL ENGINEER OR LAND SURVEYOR, TO ALTER AN ITEM IN ANY WAY. IF AN ITEM BEARING THE SEAL OF AN ENGINEER OR LAND SURVEYOR IS ALTERED, THE ALTERING ENGINEER OR LAND SURVEYOR SHALL AFFIX TO THE ITEM HIS SEAL AND THE NOTATION "ALTERED BY" FOLLOWED BY HIS SIGNATURE AND THE DATE OF SUCH ALTERATION, AND A SPECIFIC DESCRIPTION OF THE ALTERATION.

NO.	DESCRIPTION	DATE	DRAWN	CHK'D	APP'D
0	ISSUED FOR CONSTRUCTION	1/25/12	JTS	XH	TCD
DRAWN BY	DATE	SEAL			
CHECKED BY	DATE				
APPROVED BY	DATE				
PROJECT MGR.	DATE				

PARSONS
COMMERCIAL TECHNOLOGY GROUP

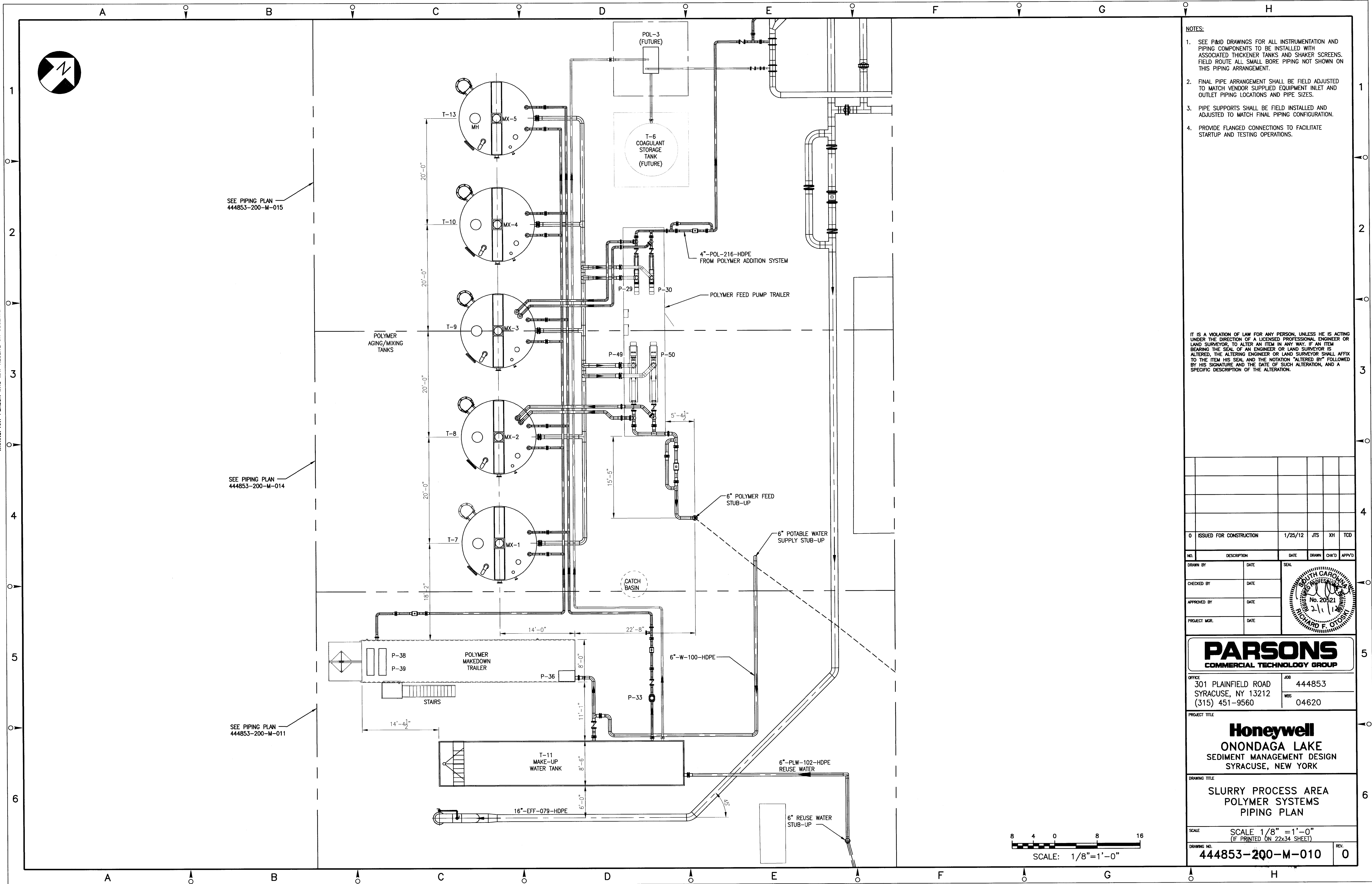
OFFICE: 301 PLAINFIELD ROAD
SYRACUSE, NY 13212
(315) 451-9560
JOB: 444853
WBS: 04620

Honeywell
ONONDAGA LAKE
SEDIMENT MANAGEMENT DESIGN
SYRACUSE, NEW YORK

DRAWING TITLE
SLURRY PROCESS AREA
THICKENER TANKS PIPING
PARTIAL PLANS

SCALE: SCALE 3/8" = 1'-0"
(IF PRINTED ON 22x34 SHEET)
DRAWING NO. 444853-200-M-009
REV. 0

NOTICE: THIS DRAWING IS THE PROPERTY OF HONEYWELL. IT IS FURNISHED SUBJECT TO RETURN ON DEMAND AND THE CONDITION THAT THE INFORMATION AND TECHNOLOGY EMBODIED HEREIN IS NOT TO BE REPRODUCED, COPIED, OR IN ANY MANNER DISCLOSED OR USED IN WHOLE OR IN PART EXCEPT AS PREVIOUSLY AUTHORIZED IN WRITING. ANY PERSON WHO MAY RECEIVE OR OBSERVE THIS DESIGN WILL BE HELD STRICTLY LIABLE FOR ANY VIOLATION WHETHER WILLFUL OR NEGLIGENT.



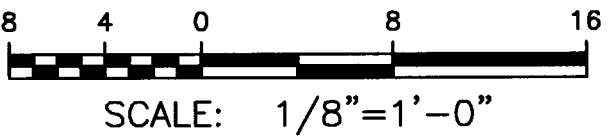
NOTES:

- SEE P&ID DRAWINGS FOR ALL INSTRUMENTATION AND PIPING COMPONENTS TO BE INSTALLED WITH ASSOCIATED THICKENER TANKS AND SHAKER SCREENS. FIELD ROUTE ALL SMALL BORE PIPING NOT SHOWN ON THIS PIPING ARRANGEMENT.
- FINAL PIPE ARRANGEMENT SHALL BE FIELD ADJUSTED TO MATCH VENDOR SUPPLIED EQUIPMENT INLET AND OUTLET PIPING LOCATIONS AND PIPE SIZES.
- PIPE SUPPORTS SHALL BE FIELD INSTALLED AND ADJUSTED TO MATCH FINAL PIPING CONFIGURATION.
- PROVIDE FLANGED CONNECTIONS TO FACILITATE STARTUP AND TESTING OPERATIONS.

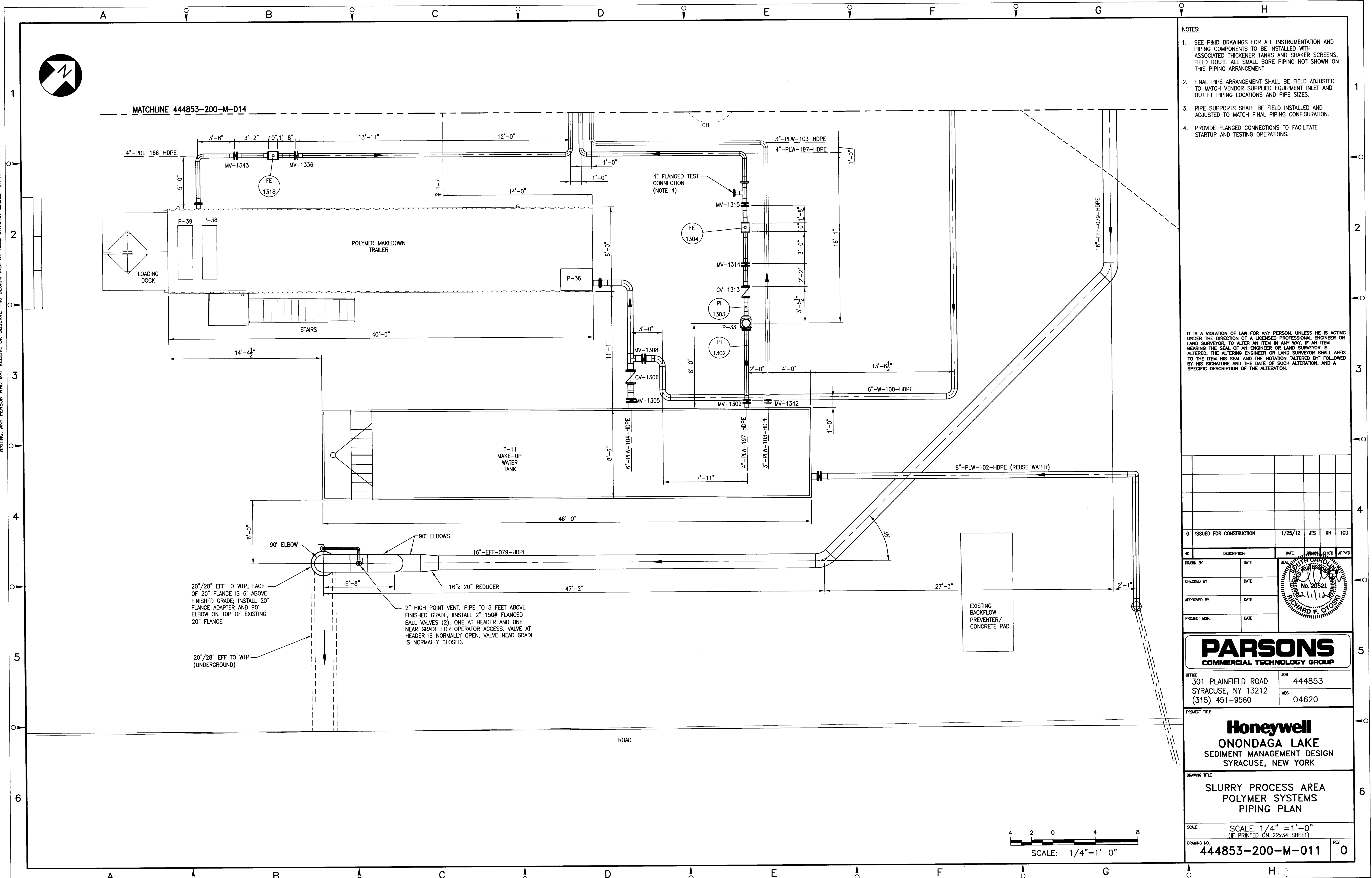
IT IS A VIOLATION OF LAW FOR ANY PERSON, UNLESS HE IS ACTING UNDER THE DIRECTION OF A LICENSED PROFESSIONAL ENGINEER OR LAND SURVEYOR, TO ALTER AN ITEM IN ANY WAY. IF AN ITEM BEARING THE SEAL OF AN ENGINEER OR LAND SURVEYOR IS ALTERED, THE ALTERING ENGINEER OR LAND SURVEYOR SHALL AFFIX TO THE ITEM HIS SEAL AND THE NOTATION "ALTERED BY" FOLLOWED BY HIS SIGNATURE AND THE DATE OF SUCH ALTERATION, AND A SPECIFIC DESCRIPTION OF THE ALTERATION.

0	ISSUED FOR CONSTRUCTION	1/25/12	JTS	XH	TCD
NO.	DESCRIPTION	DATE	DRAWN	CHK'D	APP'D
DRAWN BY	DATE	SEAL			
CHECKED BY	DATE				
APPROVED BY	DATE				
PROJECT MGR.	DATE				

PARSONS COMMERCIAL TECHNOLOGY GROUP	
OFFICE 301 PLAINFIELD ROAD SYRACUSE, NY 13212 (315) 451-9560	JOB 444853 WBS 04620
PROJECT TITLE Honeywell ONONDAGA LAKE SEDIMENT MANAGEMENT DESIGN SYRACUSE, NEW YORK	
DRAWING TITLE SLURRY PROCESS AREA POLYMER SYSTEMS PIPING PLAN	
SCALE SCALE 1/8" = 1'-0" (IF PRINTED ON 22x34 SHEET)	
DRAWING NO. 444853-200-M-010	REV. 0



NOTICE: THIS DRAWING IS THE PROPERTY OF HONEYWELL. IT IS FURNISHED SUBJECT TO RETURN ON DEMAND AND THE CONDITION THAT THE INFORMATION AND TECHNOLOGY EMBODIED HEREIN SHALL NOT BE REPRODUCED OR COPIED IN WHOLE OR IN PART EXCEPT AS PREVIOUSLY AUTHORIZED IN WRITING. ANY PERSON WHO MAY RECEIVE OR OBSERVE THIS DESIGN WILL BE HELD STRICTLY LIABLE FOR ANY VIOLATION WHETHER WILLFUL OR NEGLIGENT.



- NOTES:
1. SEE P&ID DRAWINGS FOR ALL INSTRUMENTATION AND PIPING COMPONENTS TO BE INSTALLED WITH ASSOCIATED THICKENER TANKS AND SHAKER SCREENS. FIELD ROUTE ALL SMALL BORE PIPING NOT SHOWN ON THIS PIPING ARRANGEMENT.
 2. FINAL PIPE ARRANGEMENT SHALL BE FIELD ADJUSTED TO MATCH VENDOR SUPPLIED EQUIPMENT INLET AND OUTLET PIPING LOCATIONS AND PIPE SIZES.
 3. PIPE SUPPORTS SHALL BE FIELD INSTALLED AND ADJUSTED TO MATCH FINAL PIPING CONFIGURATION.
 4. PROVIDE FLANGED CONNECTIONS TO FACILITATE STARTUP AND TESTING OPERATIONS.

IT IS A VIOLATION OF LAW FOR ANY PERSON, UNLESS HE IS ACTING UNDER THE DIRECTION OF A LICENSED PROFESSIONAL ENGINEER OR LAND SURVEYOR, TO ALTER AN ITEM IN ANY WAY. IF AN ITEM BEARING THE SEAL OF AN ENGINEER OR LAND SURVEYOR IS ALTERED, THE ALTERING ENGINEER OR LAND SURVEYOR SHALL AFFIX TO THE ITEM HIS SEAL AND THE NOTATION "ALTERED BY" FOLLOWED BY HIS SIGNATURE AND THE DATE OF SUCH ALTERATION, AND A SPECIFIC DESCRIPTION OF THE ALTERATION.

NO.	DESCRIPTION	DATE	ISSUED FOR CONSTRUCTION	1/25/12	JTS	XH	TCD
0	ISSUED FOR CONSTRUCTION	1/25/12	JTS	XH	TCD		
DRAWN BY	DATE	SEAL	DATE	DATE	DATE	DATE	DATE
CHECKED BY	DATE						
APPROVED BY	DATE						
PROJECT MGR.	DATE						

PARSONS
COMMERCIAL TECHNOLOGY GROUP

OFFICE 301 PLAINFIELD ROAD
SYRACUSE, NY 13212
(315) 451-9560

JOB 444853
WBS 04620

PROJECT TITLE
Honeywell
ONONDAGA LAKE
SEDIMENT MANAGEMENT DESIGN
SYRACUSE, NEW YORK

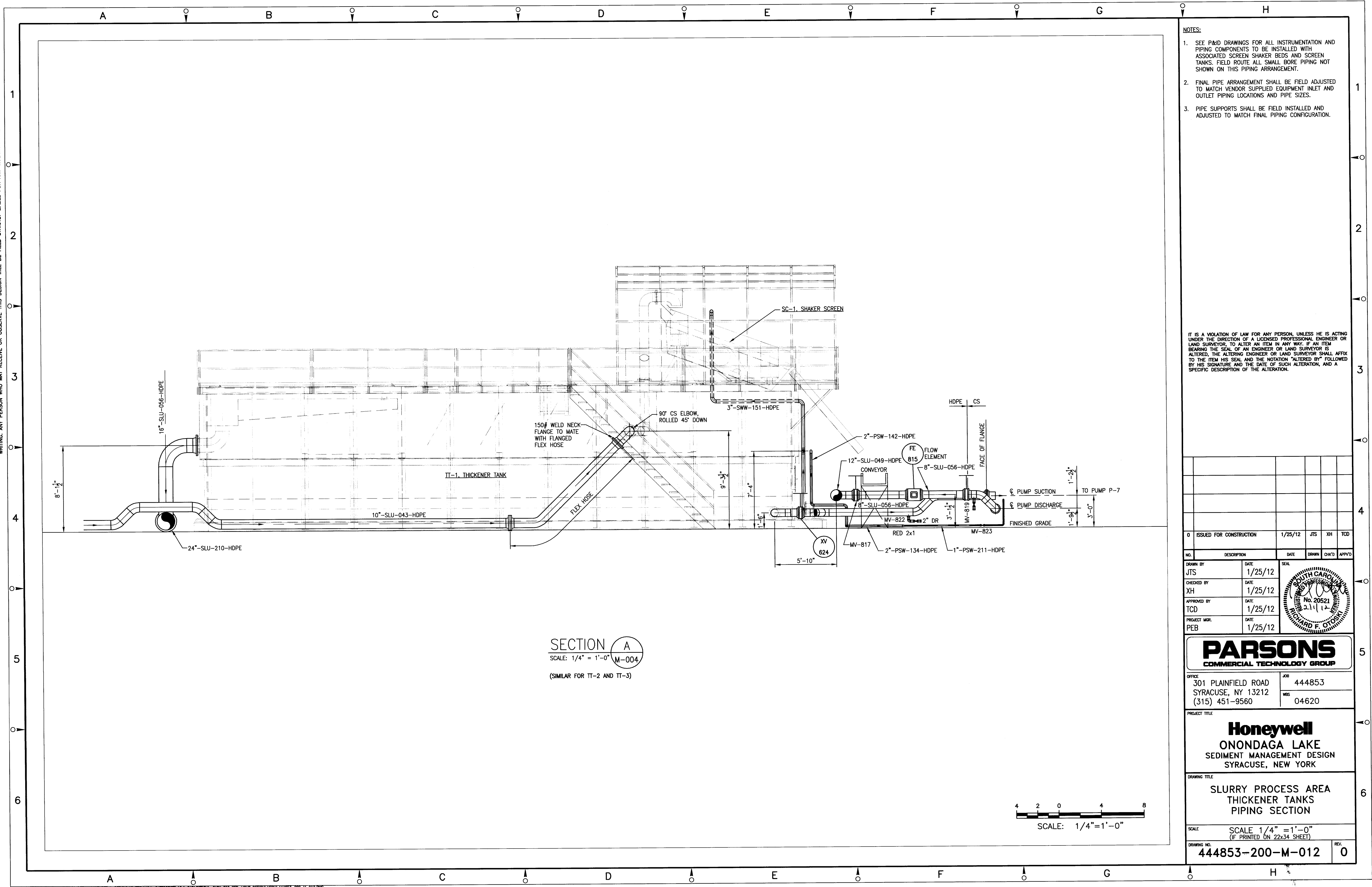
DRAWING TITLE
SLURRY PROCESS AREA
POLYMER SYSTEMS
PIPING PLAN

SCALE 1/4" = 1'-0"
(IF PRINTED ON 22x34 SHEET)

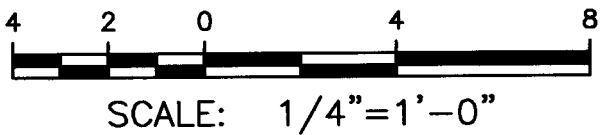
DRAWING NO. 444853-200-M-011

REV. 0

NOTICE: THIS DRAWING IS THE PROPERTY OF HONEYWELL. IT IS FURNISHED SUBJECT TO RETURN ON DEMAND AND THE CONDITION THAT THE INFORMATION AND TECHNOLOGY EMBODIED HEREIN SHALL NOT BE DISCLOSED OR USED AND THE DRAWING SHALL NOT BE REPRODUCED OR COPIED IN WHOLE OR IN PART EXCEPT AS PREVIOUSLY AUTHORIZED IN WRITING. ANY PERSON WHO MAY RECEIVE OR OBSERVE THIS DESIGN WILL BE HELD STRICTLY LIABLE FOR ANY VIOLATION WHETHER WILLFUL OR NEGLIGENT.



SECTION A
SCALE: 1/4" = 1'-0"
(SIMILAR FOR TT-2 AND TT-3)



- NOTES:
- SEE P&ID DRAWINGS FOR ALL INSTRUMENTATION AND PIPING COMPONENTS TO BE INSTALLED WITH ASSOCIATED SCREEN SHAKER BEDS AND SCREEN TANKS. FIELD ROUTE ALL SMALL BORE PIPING NOT SHOWN ON THIS PIPING ARRANGEMENT.
 - FINAL PIPE ARRANGEMENT SHALL BE FIELD ADJUSTED TO MATCH VENDOR SUPPLIED EQUIPMENT INLET AND OUTLET PIPING LOCATIONS AND PIPE SIZES.
 - PIPE SUPPORTS SHALL BE FIELD INSTALLED AND ADJUSTED TO MATCH FINAL PIPING CONFIGURATION.

IT IS A VIOLATION OF LAW FOR ANY PERSON, UNLESS HE IS ACTING UNDER THE DIRECTION OF A LICENSED PROFESSIONAL ENGINEER OR LAND SURVEYOR, TO ALTER AN ITEM IN ANY WAY. IF AN ITEM BEARING THE SEAL OF AN ENGINEER OR LAND SURVEYOR IS ALTERED, THE ALTERING ENGINEER OR LAND SURVEYOR SHALL AFFIX TO THE ITEM HIS SEAL AND THE NOTATION "ALTERED BY" FOLLOWED BY HIS SIGNATURE AND THE DATE OF SUCH ALTERATION, AND A SPECIFIC DESCRIPTION OF THE ALTERATION.

0	ISSUED FOR CONSTRUCTION	1/25/12	JTS	XH	TCD
NO.	DESCRIPTION	DATE	DRAWN	CHK'D	APP'D
DRAWN BY	JTS	DATE	1/25/12	SEAL	
CHECKED BY	XH	DATE	1/25/12		
APPROVED BY	TCD	DATE	1/25/12		
PROJECT MGR.	PEB	DATE	1/25/12		

PARSONS
COMMERCIAL TECHNOLOGY GROUP

OFFICE: 301 PLAINFIELD ROAD
SYRACUSE, NY 13212
(315) 451-9560

JOB: 444853
WBS: 04620

PROJECT TITLE:
Honeywell
ONONDAGA LAKE
SEDIMENT MANAGEMENT DESIGN
SYRACUSE, NEW YORK

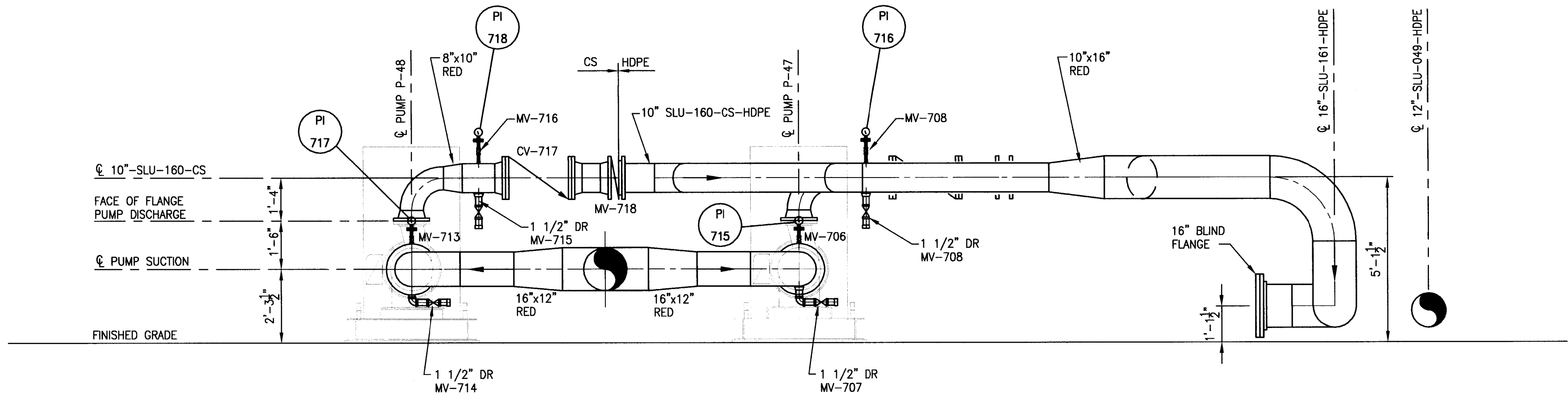
DRAWING TITLE:
SLURRY PROCESS AREA
THICKENER TANKS
PIPING SECTION

SCALE:
SCALE 1/4" = 1'-0"
(IF PRINTED ON 22x34 SHEET)

DRAWING NO.: 444853-200-M-012

REV: 0

NOTICE: THIS DRAWING, THE PROPERTY OF HONEYWELL, IS FURNISHED SUBJECT TO RETURN ON DEMAND AND THE CONDITION THAT THE INFORMATION AND TECHNOLOGY EMBODIED HEREIN IS NOT TO BE REPRODUCED OR COPIED IN WHOLE OR IN PART EXCEPT AS PREVIOUSLY AUTHORIZED IN WRITING. ANY PERSON WHO MAY RECEIVE OR OBSERVE THIS DESIGN WILL BE HELD STRICTLY LIABLE FOR ANY VIOLATION WHETHER WILLFUL OR NEGLIGENT.



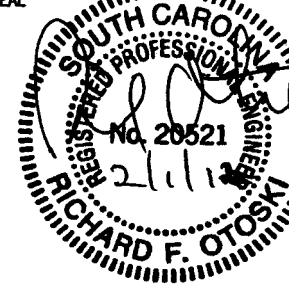
SECTION A
SCALE: 3/8" = 1'-0"
M-009

2 1 0 2 4
SCALE: 3/8"=1'-0"

- NOTES:
- SEE P&ID DRAWINGS FOR ALL INSTRUMENTATION AND PIPING COMPONENTS TO BE INSTALLED WITH ASSOCIATED SCREEN SHAKER BEDS AND SCREEN TANKS. FIELD ROUTE ALL SMALL BORE PIPING NOT SHOWN ON THIS PIPING ARRANGEMENT.
 - FINAL PIPE ARRANGEMENT SHALL BE FIELD ADJUSTED TO MATCH VENDOR SUPPLIED EQUIPMENT INLET AND OUTLET PIPING LOCATIONS AND PIPE SIZES.
 - PIPE SUPPORTS SHALL BE FIELD INSTALLED AND ADJUSTED TO MATCH FINAL PIPING CONFIGURATION.

IT IS A VIOLATION OF LAW FOR ANY PERSON, UNLESS HE IS ACTING UNDER THE DIRECTION OF A LICENSED PROFESSIONAL ENGINEER OR LAND SURVEYOR, TO ALTER AN ITEM IN ANY WAY. IF AN ITEM BEARING THE SEAL OF AN ENGINEER OR LAND SURVEYOR IS ALTERED, THE ALTERING ENGINEER OR LAND SURVEYOR SHALL AFFIX TO THE ITEM HIS SEAL AND THE NOTATION "ALTERED BY" FOLLOWED BY HIS SIGNATURE AND THE DATE OF SUCH ALTERATION, AND A SPECIFIC DESCRIPTION OF THE ALTERATION.

0	ISSUED FOR CONSTRUCTION	1/25/12	JTS	XH	TCD

NO.	DESCRIPTION	DATE	DRAWN	CHK'D	APP'VD
DRAWN BY JTS	DATE 1/25/12	SEAL			
CHECKED BY XH	DATE 1/25/12				
APPROVED BY TCD	DATE 1/25/12				
PROJECT MGR. PEB	DATE 1/25/12				

PARSONS
COMMERCIAL TECHNOLOGY GROUP

OFFICE: 301 PLAINFIELD ROAD
SYRACUSE, NY 13212
(315) 451-9560

JOB: 444853
WS: 04620

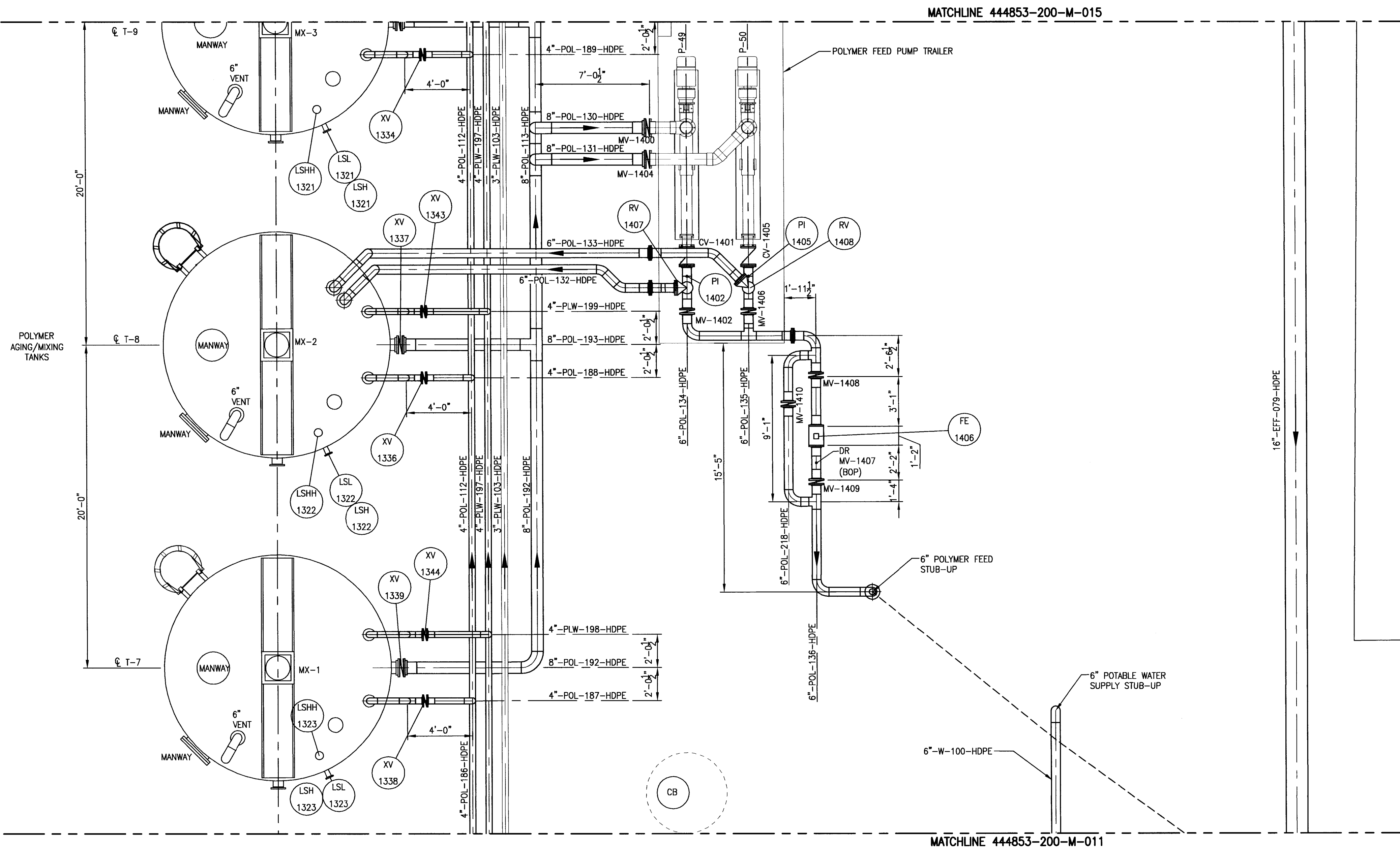
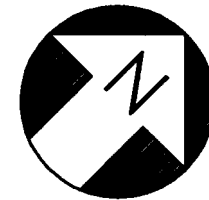
PROJECT TITLE
Honeywell
ONONDAGA LAKE
SEDIMENT MANAGEMENT DESIGN
SYRACUSE, NEW YORK

DRAWING TITLE
SLURRY PROCESS AREA
THICKENER TANKS
PIPING SECTION

SCALE: SCALE 3/8" = 1'-0"
(IF PRINTED ON 22x34 SHEET)

DRAWING NO. 444853-200-M-013
REV. 0

NOTICE: THIS DRAWING IS THE PROPERTY OF HONEYWELL. IT IS FURNISHED SUBJECT TO RETURN ON DEMAND AND THE CONDITION THAT THE INFORMATION AND TECHNOLOGY EMBODIED HEREIN SHALL NOT BE DISCLOSED OR USED AND THE DRAWING SHALL NOT BE REPRODUCED OR COPIED IN WHOLE OR IN PART EXCEPT AS PREVIOUSLY AUTHORIZED IN WRITING. ANY PERSON WHO MAY RECEIVE OR OBSERVE THIS DESIGN WILL BE HELD STRICTLY LIABLE FOR ANY VIOLATION WHETHER WILLFUL OR NEGLIGENT.



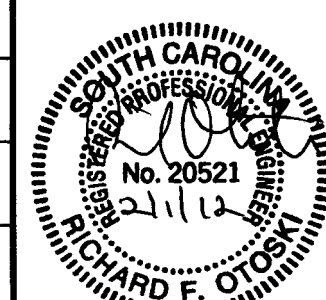
- NOTES:
1. SEE P&ID DRAWINGS FOR ALL INSTRUMENTATION AND PIPING COMPONENTS TO BE INSTALLED WITH ASSOCIATED THICKENER TANKS AND SHAKER SCREENS. FIELD ROUTE ALL SMALL BORE PIPING NOT SHOWN ON THIS PIPING ARRANGEMENT.
 2. FINAL PIPE ARRANGEMENT SHALL BE FIELD ADJUSTED TO MATCH VENDOR SUPPLIED EQUIPMENT INLET AND OUTLET PIPING LOCATIONS AND PIPE SIZES.
 3. PIPE SUPPORTS SHALL BE FIELD INSTALLED AND ADJUSTED TO MATCH FINAL PIPING CONFIGURATION.
 4. PROVIDE FLANGED CONNECTIONS TO FACILITATE STARTUP AND TESTING OPERATIONS.

IT IS A VIOLATION OF LAW FOR ANY PERSON, UNLESS HE IS ACTING UNDER THE DIRECTION OF A LICENSED PROFESSIONAL ENGINEER OR LAND SURVEYOR, TO ALTER AN ITEM IN ANY WAY. IF AN ITEM BEARING THE SEAL OF AN ENGINEER OR LAND SURVEYOR IS ALTERED, THE ALTERING ENGINEER OR LAND SURVEYOR SHALL AFFIX TO THE ITEM HIS SEAL AND THE NOTATION "ALTERED BY" FOLLOWED BY HIS SIGNATURE AND THE DATE OF SUCH ALTERATION, AND A SPECIFIC DESCRIPTION OF THE ALTERATION.

0	ISSUED FOR CONSTRUCTION	1/25/12	JTS	XH	TCD
---	-------------------------	---------	-----	----	-----

NO.	DESCRIPTION	DATE	DRAWN	CHK'D	APP'D
-----	-------------	------	-------	-------	-------

DRAWN BY	DATE	SEAL
CHECKED BY	DATE	
APPROVED BY	DATE	
PROJECT MGR.	DATE	



OFFICE	301 PLAINFIELD ROAD SYRACUSE, NY 13212 (315) 451-9560	JOB	444853
WBS	04620		

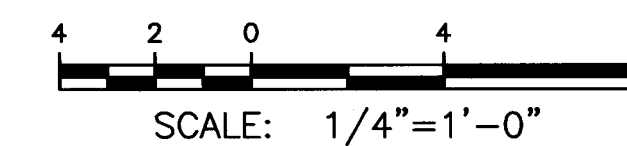
PROJECT TITLE
Honeywell
ONONDAGA LAKE
SEDIMENT MANAGEMENT DESIGN
SYRACUSE, NEW YORK

DRAWING TITLE
SLURRY PROCESS AREA
POLYMER SYSTEMS
PIPING PLAN

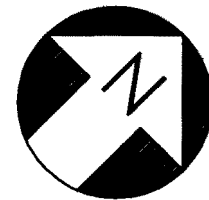
SCALE
SCALE 1/4" = 1'-0"
(IF PRINTED ON 22x34 SHEET)

DRAWING NO.
444853-200-M-014

REV.
0



NOTICE: THIS DRAWING IS THE PROPERTY OF HONEYWELL. IT IS FURNISHED SUBJECT TO RETURN ON DEMAND AND THE CONDITION THAT THE INFORMATION AND TECHNOLOGY EMBODIED HEREIN SHALL NOT BE DISCLOSED OR USED AND THE DRAWING SHALL NOT BE REPRODUCED OR COPIED IN WHOLE OR IN PART EXCEPT AS PREVIOUSLY AUTHORIZED IN WRITING. ANY PERSON WHO MAY RECEIVE OR OBSERVE THIS DESIGN WILL BE HELD STRICTLY LIABLE FOR ANY VIOLATION WHETHER WILLFUL OR NEGLIGENT.



NOTES:

1. SEE P&ID DRAWINGS FOR ALL INSTRUMENTATION AND PIPING COMPONENTS TO BE INSTALLED WITH ASSOCIATED THICKENER TANKS AND SHAKER SCREENS. FIELD ROUTE ALL SMALL BORE PIPING NOT SHOWN ON THIS PIPING ARRANGEMENT.
2. FINAL PIPE ARRANGEMENT SHALL BE FIELD ADJUSTED TO MATCH VENDOR SUPPLIED EQUIPMENT INLET AND OUTLET PIPING LOCATIONS AND PIPE SIZES.
3. PIPE SUPPORTS SHALL BE FIELD INSTALLED AND ADJUSTED TO MATCH FINAL PIPING CONFIGURATION.
4. PROVIDE FLANGED CONNECTIONS TO FACILITATE STARTUP AND TESTING OPERATIONS.

IT IS A VIOLATION OF LAW FOR ANY PERSON, UNLESS HE IS ACTING UNDER THE DIRECTION OF A LICENSED PROFESSIONAL ENGINEER OR LAND SURVEYOR, TO ALTER AN ITEM IN ANY WAY. IF AN ITEM BEARING THE SEAL OF AN ENGINEER OR LAND SURVEYOR IS ALTERED, THE ALTERING ENGINEER OR LAND SURVEYOR SHALL AFFIX TO THE ITEM HIS SEAL AND THE NOTATION "ALTERED BY" FOLLOWED BY HIS SIGNATURE AND THE DATE OF SUCH ALTERATION, AND A SPECIFIC DESCRIPTION OF THE ALTERATION.

0 ISSUED FOR CONSTRUCTION		1/25/12	JTS	XH	TCD
NO.	DESCRIPTION	DATE	DRAWN	CHK'D	APPROV'D
DRAWN BY	DATE				
CHECKED BY	DATE				
APPROVED BY	DATE				
PROJECT MGR.	DATE				

PARSONS
COMMERCIAL TECHNOLOGY GROUP

OFFICE: 301 PLAINFIELD ROAD
SYRACUSE, NY 13212
(315) 451-9560

JOB: 444853
WBS: 04620

PROJECT TITLE
Honeywell
ONONDAGA LAKE
SEDIMENT MANAGEMENT DESIGN
SYRACUSE, NEW YORK

DRAWING TITLE
SLURRY PROCESS AREA
POLYMER SYSTEMS
PIPING PLAN

SCALE: SCALE 1/4" = 1'-0"
(IF PRINTED ON 22x34" SHEET)

DRAWING NO. **444853-200-M-015** REV. **0**