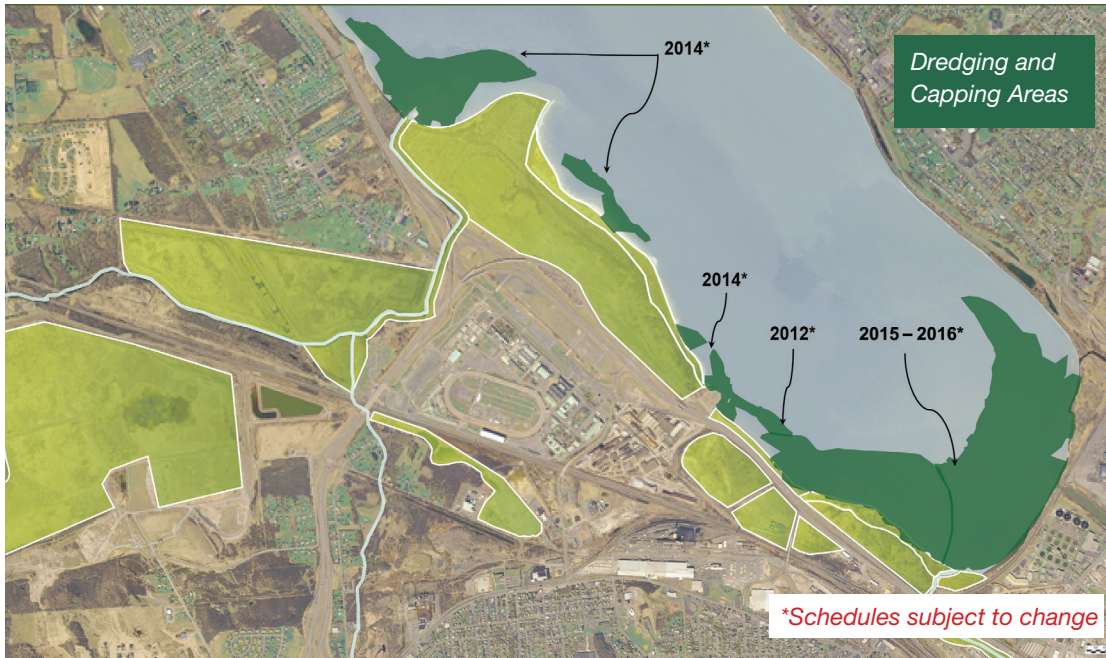


# Navigational Safety Measures During Onondaga Lake Cleanup

From 2012-2016, hydraulic dredges and capping barges will operate 24 hours a day, 6-7 days a week (except for the winter months) to remove about 2 million cubic yards of material from the bottom of Onondaga Lake. About 450 acres of the lake will be capped.



**ACCESS TO  
WORK AREAS  
PROHIBITED;  
MAINTAIN  
A SAFE  
DISTANCE.**

## Three access points may be restricted:

- ▲ Onondaga Creek inlet
- ▲ Nine Mile Creek inlet
- ▲ Area near Exit 7 off Interstate 690

## Minimizing Potential Risks:

To minimize potential risks to boaters during on-water remediation activities, U.S. Coast Guard approved markers are used on floating pipelines, project vessels and on-water equipment.



Work barges are clearly designated with proper navigational markings.

A pipeline, which transports lake material, primarily floats on the surface and is marked with buoys. Boaters are prohibited from passing over the pipeline.



Silt curtains help control short-term impacts on water quality and keep lake material from spreading. Buoys are installed around activities outside of a silt curtain.

**IN THE EVENT OF AN EMERGENCY:**  
Dial 911 or broadcast on VHF Channel 16.

Individuals interested in more information please contact Honeywell at **315.552.9784** or visit **[www.lakecleanup.com](http://www.lakecleanup.com)**.